

2012 New Product Supplement

This product supplement is designed to work alongside your existing Bainbridge Marine catalogue V3.0BM, launched March 2011. Please contact us if you require additional copies of the catalogue.



BAINBRIDGE
MARINE

www.bainbridgmarine.co.uk

Welcome to the 2012 New Product Supplement!

We have expanded our portfolio for 2012 and now stock Lowrance Marine Electronics, Gerber knives, multi-tools and torches, Trident Marine hoses, Attwood pumps and seating, Bostik adhesives and many more. This supplement is designed to work with your existing Bainbridge Marine catalogue, issued in March last year.

Order online at www.bainbridgmarine.co.uk

Our e-commerce site, www.bainbridgmarine.co.uk, features a detailed search and navigation functionality, live stock availability and up to the minute pricing. The products shown on our website also appear in both the Bainbridge Marine catalogue and this Product Supplement, however as we introduce new products, these appear first on the website. By using your unique and secure login code, you can place orders directly, check your trade price, reserve stock for quick delivery and benefit from emailed order confirmation. You will also be able to take advantage of special offers and clearance lines posted on the site. All orders placed online will qualify for an additional 2% discount. If you do not yet have a login code, contact us today and start saving!

Product Information

For more detailed product information please contact customer services who will be able to direct you to one of our technical experts or provide you with the corresponding suppliers' catalogues.

Terms and Conditions

Our full terms and conditions can be found at the back of this New Product Supplement.

Contents



Electronics

Pages 1 to 20

A complete range of marine electronics from leading manufacturer Lowrance. Products include echosounders, chartplotters, VHF radios and more.



Fenders & Mooring

Pages 21 to 22

A new range of fender covers from Fendress, developed to fit a variety of shapes and sizes of popular brands of fenders.



General Chandlery

Pages 23 to 50

Includes Gerber knives, multi-tools & torches, OverBoard waterproof bags & cases, Bainbridge Sailcloth Bags, Attwood Seating, ScantStrut iPad Cases and much more.



Pumps & Water Systems

Pages 51 to 54

A selection of bilge pumps and accessories from Attwood Marine that complement our existing water systems products.



Electrical

Pages 55 to 56

Suitable for marine use, our new range of batteries are dual purpose and excellent value for money.



Paints & Boat Care

Pages 57 to 66

This section includes the new range of specialist marine adhesives and sealants from Bostik, as well as a variety of new products from Hempel, including Classic Antifoul, exclusive to Bainbridge.



Lowrance Marine Electronics

X-Series Echosounders	2
Mark™ Series Echosounder / Chartplotter	3
Elite™ Series Echosounder / Chartplotter	4
Mark™ & Elite™ Series DSI	5
HDS® Multifunction Displays	6 - 7
HDS® Performance Expansion Options	8 - 10
StructureScan™ Sonar Imaging	11
SonicHub™ Marine Audio Server	12
Broadband 4G™ Radar	13
Broadband 3G™ Radar	14
High Definition Digital Radars	15
AIS Class-B Systems	16
Navionics® Cartography	17
VHF Marine Radios	18
Lowrance Accessories	19

LOWRANCE[®]

Lowrance Marine Electronics

Since 1957, Lowrance has continued its tradition of leading the way in developing innovative marine electronics that deliver meaningful performance benefits to perfectly equip boaters and anglers of all skill levels.

From high performance echosounders to complete navigation systems, Lowrance delivers a comprehensive range of options designed to enhance every on-water experience. Lowrance products are renowned for their high visibility displays and state-of-the-art functionality. Product ranges cater for all budgets and requirements. Lowrance is also a leader in other marine electronics including marine radars, VHF radios and networked engine management systems.

X-Series Echosounders



X-4 Pro - NC10229001
High-Detail 83/200 kHz Echosounder

Enjoy productive shallow and deepwater performance, plus superb target detail and separation. Packed with an advanced receiver and a wealth of Lowrance features, the X-4 Pro is easy to use and very affordable.

- Sunlight-viewable 10.2cm/ 4inch display
- Sealed and waterproof casing
- Detailed 4 level greyscale resolution
- Powerful 188W RMS/ 1500W peak-to-peak echosounding depths of 305m / 1000ft @83 kHz
- High speed Skimmer[®] transom mount transducer with water-temp sensor and up to 120° sonar coverage
- Automatic tuning with integrated ASP[™] (advanced signal processing)
- GRAYLINE[®], Advanced Fish ID[™], FishTrack[™] and more



X-4 - NC10227001
High-Detail 200 kHz Echosounder

Easy, effective fishfinding with incredible Lowrance features and superb viewing. The X-4 is simply unbeatable for highest performance at the lowest price!

- Sunlight-viewable 10.2cm/ 4inch display
- Sealed and waterproof casing
- Detailed 4 level greyscale resolution
- Proven 100W RMS/ 800W peak-to-peak echosounding depths of 183m / 600ft
- High speed Skimmer[®] transom mount transducer with water-temp sensor and up to 60° sonar coverage
- Integrated features include automatic ASP[™] tuning, GRAYLINE[®], Advanced Fish ID[™] and FishTrack[™]



X-4 Portable - NC10228001
High-Detail 200 kHz Echosounder

Great for go-anywhere fishfinding ease on kayaks, rowing boats or virtually any kind of watercraft that floats!

With the same great features as the standard X-4 but includes a waterproof soft-sided zipper case with a sturdy mounting base, Skimmer 200 kHz transducer with suction cup mounting (not designed for high speed use) and battery power pack for eight D-cell batteries (batteries not included).

Part Number	Description	Display Size: in/mm	Sonar Frequency: kHz	Sonar Depth: ft/m	Width: mm	Height: mm	Depth: mm	Power Supply
NC10229001	X-4 Pro Echosounder	4 / 102	83 / 200	Max 1000 / 305	108	147	64	10 - 17 vDC
NC10227001	X-4 Echosounder	4 / 102	200	Max 600 / 183	108	147	64	10 - 17 vDC
NC10228001	X-4 Portable Echosounder	4 / 102	200	Max 600 / 183	108	147	64	10 - 17 vDC

Mark Series Echosounder/Chartplotter

Mark Series Greyscale Echosounders and Chartplotter Combination Units

Mark-4 Series



Mark-4 - NC10483002
83/200 kHz Greyscale Echosounder/Chartplotter

The world's greatest value compact, dual-function echosounder and chartplotter. Bright, sunlight-viewable greyscale display packed with all the features you need, at a price lower than you would expect.

- New, brighter LED backlighting
- Exclusive TrackBack™ feature
- Best-in-class Lowrance Fishfinding technology
- Easy-to-use menu page and menu controls
- Simplified menu navigation
- Quick-release tilt and swivel bracket
- Accurate internal GPS antenna
- MicroSD cardslot for high-detail mapping options

Mark-5 Series Echosounders



Mark-5x - NC00100001
83/200 kHz Echosounder

Proven Lowrance fishfinding features and high-detail 5"/12.7 cm sunlight-maximized display for high-performance 200 kHz sounding.

- TrackBack™ scroll back feature
- Optimized automatic mode for high-performance out-of-the-box fishfinding
- 200W RMS, 1,600W peak-to-peak; depth to 800ft/244 m
- 200 kHz Skimmer® transom-mount transducer with internal temp sensor and up to 60° of fish-finding coverage



Mark-5x Pro Fish - NC00175001
83/200 kHz Dual-Frequency Echosounder

Proven Lowrance fishfinding features and high-detail 5"/12.7 cm sunlight-maximized display for high-performance 200 kHz sounding.

- Dual frequency 83/200 kHz Skimmer® transom-mount transducer with built-in temp sensor and up to 120° of wide sonar coverage.
- 300W RMS/2,400W peak-to-peak power for depths to 1000ft/305m
- TrackBack™ scroll back feature to review multiple pages of echosounder history



Mark-5x Portable - NC00101001
83/200 kHz Dual-Frequency Echosounder

With the same great features as the standard Mark-5x but includes a waterproof soft-sided zipper case with a sturdy mounting base, Skimmer 200 kHz transducer with suction cup mounting (not designed for high speed use) and battery power pack for eight D-cell batteries (batteries not included).

Part Number	Description	Display Size: in/mm	Sonar Frequency: kHz	Sonar Depth: ft/m	Width: mm	Height: mm	Depth: mm	Power Supply
NC10483002	Mark-4 Echosounder/Chartplotter	4 / 102	83 / 200	Max 200 / 61	94	144	97	12 vDC
NC00100001	Mark-5x Echosounder	5 / 127	83 / 200	Max 800 / 244	174	136	63	10 - 17 vDC
NC00175001	Mark-5x Pro Fish Echosounder	5 / 127	83 / 200	Max 800 / 244	174	136	63	10 - 17 vDC
NC00101001	Mark-5x Portable Echosounder	5 / 127	83 / 200	Max 800 / 244	174	136	63	10 - 17 vDC

Elite Series Echosounder/Chartplotter

Elite Series Colour Echosounders and Chartplotter Combination Units

Elite-4 Series Units



Elite-4 - NC10491002

Colour Echosounder/Chartplotter

Bright 8.9cm / 3.5in display with charting and echosounding versatility for the ultimate in compact standalone navigation. 83/200kHz colour echosounder and microSD slot for Navionics® charts.

- Exclusive TrackBack™ feature
- Best-in-class Lowrance fishfinder technology
- Easy-to-use menu page and menu controls
- Quick-release tilt and swivel bracket
- Accurate internal GPS antenna



Elite-4m - NC10490002

Colour Chartplotter

Dedicated standalone chartplotting with built-in GPS antenna and microSD slot for Navionics® Gold chartcards.

- New, brighter LED backlighting
- Easy-to-use menu page and menu controls
- Quick-release tilt and swivel bracket
- Accurate internal GPS antenna
- MicroSD card expandability



Elite-4x - NC10484001

Colour Echosounder

Dedicated standalone 83/200 kHz colour echosounder.

- New, brighter LED backlighting
- Exclusive TrackBack™ feature
- Best-in-class Lowrance fishfinder technology
- Easy-to-use menu page and menu controls
- Quick-release tilt and swivel bracket

Elite-5 Series Units



Elite-5 - NC00104002

Colour Echosounder/Chartplotter

Standalone 83/200 kHz colour echosounder and chartplotter with worldwide background map.

- Includes MicroSD card for downloading Navionics® Gold charts
- 500 W RMS, 4,000 W peak-to-peak; depth to 305 m/1,000 ft.
- Internal 16-channel GPS antenna



Elite-5m - NC00145002

Colour Chartplotter

Dedicated standalone colour chartplotter with worldwide background map.

- Includes MicroSD card for downloading Navionics® Gold charts
- SolarMAX™ 256-colour TFT display
- Internal 16-channel GPS antenna with WAAS+EGNOS+MSAS precision



Elite-5x - NC00102001

Colour Echosounder

Dedicated standalone 83 / 200 kHz colour echosounder.

- 500 W RMS, 4,000 W Peak-to-Peak; depth to 305 m/1,000 ft.
- Dual-frequency 83/200 kHz Skimmer® transom-mount transducer with internal temp sensor and up to 120° of wider sonar coverage

Part Number	Description	Display Size: in/mm	Sonar Frequency: kHz	Sonar Depth: ft/m	Width: mm	Height: mm	Depth: mm	Power Supply
NC10491002	Elite-4 Echosounder/Chartplotter	4 / 102	83 / 200	Max 1000 / 305	94	144	47	12 vDC
NC10490002	Elite-4m Chartplotter	4 / 102	-	-	94	144	47	12 vDC
NC10484001	Elite-4x Echosounder	4 / 102	83 / 200	Max 1000 / 305	94	144	47	12 vDC
NC00104002	Elite-5 Echosounder/Chartplotter	5 / 127	83 / 200	Max 1000 / 305	174	136	63	10 - 17 vDC
NC00145002	Elite-5m Chartplotter	5 / 127	-	-	174	136	63	10 - 17 vDC
NC00102001	Elite-5x Echosounder	5 / 127	83 / 200	Max 1000 / 305	174	136	63	10 - 17 vDC

Elite and Mark DownScan Imaging Series

DSI DownScan Imaging™ gives you a picture-perfect view of what's below your boat. See fish, structure and the seabed, all at speed, with easy to interpret images.

DSI provides advantages similar to StructureScan™ Sonar Imaging for HDS®:

- Instant understanding of what you see, no interpretation needed
- Discover new locations to fish and dive
- Easily identify the seabed
- Find safe anchorages, free of underwater obstructions



Elite-4 DSI - NC10494002

Compact Colour Imaging Echosounder/ Chartplotter

With integrated GPS antenna, complete navigation functions and microSD media slot for optional Navionics® Gold chartcards.



Elite-4x DSI - NC10487001

Compact Colour Imaging Echosounder

Impressive colour and detail on the 8.9cm/3.5in screen that virtually expands to 4x its size with the simple to use TrackBack™ feature.

Elite and Mark DSI Features:

- Easy to use, install and operate, even for echosounding novices
- Crystal clear photo-like underwater viewing
- Dual-sounding - 455 kHz wider and deeper imaging, 800 kHz enhances bottom detail
- DSI imaging to depths of 61m/200ft (4 series) and 76m/250ft (5 series)
- Seabed imaging at speeds up to 50mph/44kts
- TrackBack™ scroll review of imaging history to pinpoint spots and save waypoints with chartplotter models
- Transom mount Skimmer® DSI imaging transducer has built-in water-temp sensor
- Bright, backlit colour and greyscale displays with high-detail viewing even in sunlight
- Choice of palette to suit lighting conditions
- Automatic fine tuning for the best viewing possible



Elite-5 DSI - NC10236003

Colour Imaging Echosounder/ Chartplotter

The ultimate standalone navigational tool for the budget conscious boater. Built-in GPS antenna, high detail DSI and microSD slot for Navionics® Gold chartcards.



Elite-5x DSI - NC10235001

Colour Imaging Echosounder

Experience outstanding detail on a 5 inch colour screen with this standalone echosounder which is simple to operate.



Mark-5x DSI - NC10233001

Greyscale Imaging Echosounder

Exclusive echosounding with a high resolution, 5 inch greyscale display. Performance and value for those looking for a standalone echosounder. **Portable version also available.**



Mark-5x DSI Portable NC10234001

Part Number	Description	Display Size: in/mm	Sonar Frequency: kHz	Sonar Depth: ft/m	Width: mm	Height: mm	Depth: mm	Power Supply
NC10494002	Elite-4 DSI Echosounder/Chartplotter	4 / 102	455/800	Max 200 / 61	94	144	47	12 vDC
NC10487001	Elite-4x DSI Echosounder	4 / 102	83 / 200	Max 200 / 61	94	144	47	12 vDC
NC10236003	Elite-5 DSI Echosounder/Chartplotter	5 / 127	455/800	Max 250 / 76	174	136	63	10 - 17 vDC
NC10235001	Elite-5x DSI Echosounder	5 / 127	455/800	Max 250 / 76	174	136	63	10 - 17 vDC
NC10233001	Mark-5x DSI Echosounder	5 / 127	455/800	Max 250 / 76	174	136	63	10 - 17 vDC

HDS® High Definition Systems - The world's most popular multifunction display

Broadband Sounder™ Echosounding. The next generation of digital echosounders. An unbeatable echosounder in its class. Whether you're in shallow, mid or deepwater over 1500m.

Internal GPS Antenna. Advanced Lowrance high sensitivity GPS receiver with EGNOS/MSAS corrections for reliable position accuracy in navigation.

SolarMAX™ Screen Technology. Exclusive SolarMAX™ displays render the finest picture and detail - in the brightest sun and at the widest angles - of any marine display. White LED backlighting adjusts to zero-dim for night use.

Special Key Features. HDS-10 and HDS-8 users can assign up to 6 of their favourite screens to the softkeys panel and enjoy instant display selection and viewing with the press of one button.

Easy Operation. Special, intuitive graphic + text user interface displays are easy to grasp, access and control of feature functions.

SD Media Card Port. Display Navionics® digital charting. Record/save echosounder and GPS detail data as well as screen captures. Upload performance-enhancing software upgrades. The 10" and 8" models have two slots available, the 7" and 5" have one slot.

Out of the Box Networking. HDS features full plug-and-play connectivity for multifunction networking and performance options expansions with the versatility of dual platforms: High speed Ethernet for data-intensive devices and connectivity with the latest networking standard in onboard data sharing, NMEA 2000®.

**HDS-10 - NC10544001
Echosounder/Chartplotter**

This 10.4" screen offers the brightest possible viewing experience with intuitively simple operation through the combination of a simple and easy to understand menu system, plus programmable softkeys for instant display of favourite screens.

Along with faster setup and enhanced Navionics® chart speed, Broadband Sounder™ echosounding, along with add on extras like StructureScan™, Broadband Radar™ and SonicHub™ marine audio. It's easy to see why HDS is the most complete multifunction display on the market.

**HDS-8 - NC10539001
Echosounder/Chartplotter**

The 8.4" is a popular size for those who want to see more and do more. It is an excellent size where you can get the 'whole picture' with the ability to split the screen into 3 or 4 panels - chart, echo and StructureScan viewing is just one of the winning combinations. The HDS-8 is the best compromise for boat owners looking for a large display with a just-right footprint.

**HDS-7 - NC10534001
Echosounder/Chartplotter**

This is a favourite HDS unit for many boaters, and for a range of good reasons:

- The 7", 4:3 aspect ratio screen makes it perfect for split screen chart, echosounder and more in up to 3 window panels
- LED backlighting, as used in current high end video technology, makes this a stunning display in all conditions
- Like all HDS displays, the ability to network using both Ethernet and NMEA 2000® makes this unique in its size and class, allowing you to build the perfect navigation package.

**HDS-5 - NC10521001
Echosounder/Chartplotter**

Enjoy HDS high-definition in a popular space-saving size, with an exclusive high resolution 12.7cm/5". The display is a custom square size for maximum viewing of full or split screen - up to 3 window panels - on a compact display worldwide background map.

HDS® GPS Chartplotters

Lowrance's HDS Chartplotters offer similar features to that of the HDS Echosounder/Chartplotters - all that's missing is the integrated Broadband Sounder™ feature. The screen sizes and brightness, ease of use with unparalleled networking capabilities are also identical to HDS Echosounder/Chartplotters. Hook up an HDS Chartplotter to a network with an HDS Echosounder unit and your Chartplotter becomes capable of displaying and controlling the echosounder - perfect for installations with two or more displays.

Log on to www.lowrance.com for more detailed product specifications.

HDS-10m - NC10545001
GPS Chartplotter 10.4"



HDS-8m - NC10540001
GPS Chartplotter 8.4"



HDS-7m - NC10535001
GPS Chartplotter 7"



HDS-5m - NC10524001
GPS Chartplotter 5"



HDS Units

Part Number	Description	Display Size: in/mm	Sonar Frequency: kHz	Sonar Depth: ft/m	Width: mm	Height: mm	Depth: mm	Power Supply
NC10544001	HDS-10 Echosounder/Chartplotter	10.4 / 264	50/83/200	Max 5000 / 1524	312	225	92	10 - 17 vDC
NC10539001	HDS-8 Echosounder/Chartplotter	8.4 / 213	50/83/200	Max 5000 / 1524	269	197	93	10 - 17 vDC
NC10534001	HDS-7 Echosounder/Chartplotter	6.4 / 163	50/83/200	Max 5000 / 1524	223	164	88	10 - 17 vDC
NC10521001	HDS-5 Echosounder/Chartplotter	5 / 127	50/83/200	Max 5000 / 1524	185	147	102	10 - 17 vDC
NC10545001	HDS-10m Chartplotter	10.4 / 264	-	-	312	225	92	10 - 17 vDC
NC10540001	HDS-8m Chartplotter	8.4 / 213	-	-	269	197	93	10 - 17 vDC
NC10535001	HDS-7m Chartplotter	6.4 / 163	-	-	223	164	88	10 - 17 vDC
NC10524001	HDS-5m Chartplotter	5 / 127	-	-	185	147	102	10 - 17 vDC

HDS Accessories

Part Number	Description
NC012461	Protective Cover for HDS-5 / HDS-5m / HDS-5x
NC012462	Protective Cover for HDS-7 / HDS-7m
NC012463	Protective Cover for HDS-8 / HDS-8m
NC012464	Protective Cover for HDS-10 / HDS-10m
NC012465	Flush Mount Kit for all HDS Models

HDS® Performance Expansion Options**StructureScan®**

Picture-perfect echosounding detail with the most advanced technology for genuine panoramic underwater viewing - left, right and straight down.

Broadband Radar™

Award winning Broadband Radar technology for HDS is the most significant advancement in recreational boating navigation safety since the invention of radar itself.

HD Digital Radar

Advanced, high definition radomes or open arrays with digital signal processing for precise target detection with superb accuracy in dark and foul weather.

AIS

AIS (Automatic Identification System) focuses your awareness on all AIS capable vessels in your vicinity and reduces the risk of collision.

Transducer

Versatile, super-sensitive choices for superior echosounding - from inland, in-shore and near-shore, to high power, deep-sounding offshore options.

High-Speed GPS Antenna

Enhanced and incredible GPS Position accuracy at even the highest speeds via this 5 Hz high sensitivity antenna module with true position updates five times every second.

SonicHub® Marine Audio Server

Experience a whole new audio wave in onboard entertainment with the world's first marine-grade, waterproof audio hub/docking system with the convenience of total control using any HDS.

Vessel/Engine/Fuel Management

The most comprehensive selection of NMEA 2000® network gauges, sensors and engine interface options for improved vessel systems management and fuel economy.

Navionics® Charting

Best in class Navionics® Platinum+, Gold and earlier chartcard releases worldwide.

VHF Marine Radios

Remarkable quality, features, dependability and value in special-featured fixed-mount and handheld VHF marine communications.

HDS Performance Expansion Options

Expand Your HDS®

Lowrance HDS presents a wide range of advanced system building options to enhance your on-the-water experience, safety and enjoyment. All HDS models come fully ethernet-ready to share high bandwidth data among all HDS displays on the boat. Connect up to four HDS displays and ethernet network devices with the optional NEP-2 ethernet expansion port module for high speed data distribution onboard. HDS also features NMEA 2000®, with the most innovative range of modules and sensors available. All add-on modules are then ready to simply plug and play. Complete your system with other HDS options.

<p>Expand Your HDS with Ethernetworks</p> <p>Add Broadband Radar™</p> <p>Add a Broadband Radar™ to your HDS for unparalleled situational awareness.</p>	<p>Add HD Digital Radar</p> <p>Integrate High-Definition Digital Radar into your HDS. Compact, dependable and high performance with 2kW, 4kW Domes and 6kW 4' open array scanners.</p>
<p>Add StructureScan™</p> <p>Lowrance's LSS-1 StructureScan™ Sonar Imaging Module sees fish and structure like never before using dual frequency side and down scan modes.</p>	 <p>Submerged bridge in 30' of water, clearly defined</p>  <p>SideScan combined with DownScan Imaging</p>  <p>DownScan of the Vandenburg off Key West, FL in 2'-4' seas</p>
<p>Expand Your HDS® with NMEA 2000®</p> <p>Add SonicHub™ Marine Audio Server</p> <p>Experience the world's first marine audio hub and docking station with a stunning high definition waterproof colour display.</p>	<p>Add Automatic Identification System</p> <p>Reduce the risk of collisions with NAIS-300 that enables you to see and be seen at sea.</p>
<p>Add Engine and Vessel Management</p> <p>Display real-time readings from a range of compatible electronic probes and sensors to monitor an array of vital engine and boating readings.</p>	<p>Add Gauges</p> <p>Integrate advanced multi-function gauges with your HDS. Reliability, accuracy and simplified operation are guaranteed.</p>
<p>Add NMEA 2000® Starter Kit</p> <p>Start your own onboard NMEA 2000® network with this complete starter kit. Allows future expansion to add sensors and displays.</p>	<p>Add Precision GPS and Compasses</p> <p>Add the new LCG-400 GPS antenna to enhance your GPS capability, with 5 updates per second. Add the RC42 for precision heading input.</p>
<p>Other HDS Options</p> <p>Add Mapping</p> <p>Choose from a range of powerful plug-and-play electronic charting options for your HDS for supreme navigational awareness.</p>	<p>Add Sonar Transducers</p> <p>Lowrance integrates the widest choice of high performance transducers to suit your boat, your preference and your expectations for superior performance.</p>
<p>Add Communications</p> <p>Get in touch with Lowrance VHF marine communications. Innovative features including NMEA 2000®, FM radio and GPS/trackplotter built-in to select models. Now full Class D DSC for all models.</p>	<p>Add Performance Mounts</p> <p>Optimise your HDS display viewing position with flexible and powerful mounting bracket solutions.</p>

Performance Network Systems - Example of a Typical System



StructureScan™ Sonar

Designed for all HDS display, Lowrance StructureScan™ sonar imaging takes finding fish and underwater structures to the highest level of viewing detail ever achieved. It's the first to give you the full picture, with phenomenal panoramic underwater sonar imaging. Scans left, scans right and scans straight down from your boat!



LSS-1 with StructureScan™ Transducer

StructureScan™ Features:

- DownScan Imaging™, high detail sonar imaging focused straight down below your boat up to 100m (300ft)
- SideScan Imaging™ detail showing full-screen viewing for super crisp detail with 146m (500ft) side-to-side underwater coverage
- SideScan + DownScan Imaging™ available with split screen viewing options to give you the complete picture
- View DownScan Imaging™ with HDS Broadband Sounder in split-screen to remove all the guesswork
- Synchronised Sonar history TrackBack™ with waypoint marking
- Networkable with up to three HDS multifunction displays or ethernet sensors
- Fully waterproof module
- Rugged transducer with a smoothly fluid low profile, low drag design for multiple mounting locations

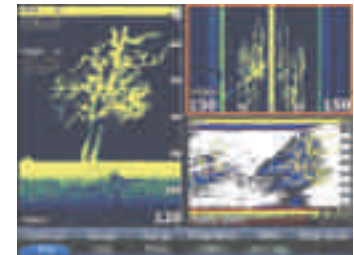
StructureScan™ Images:



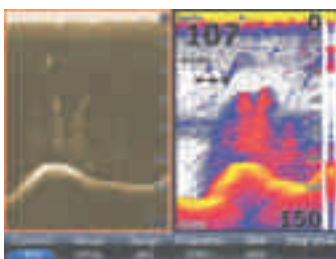
Standing timber and boulders with SideScan



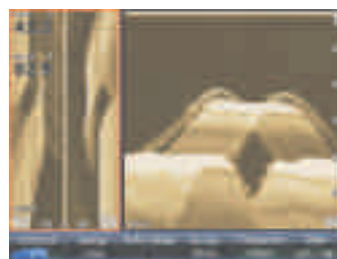
High detail views of fish-holding structure with DownScan



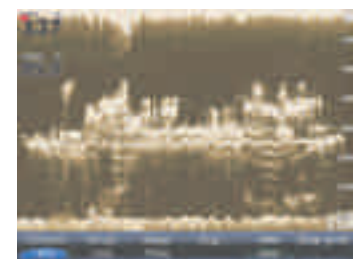
SideScan combined with DownScan Imaging



DownScan confirms trees, 2D confirms fish as arches



Submerged bridge in 30' of water, clearly defined



DownScan of the Vandenburg off Key West, FL in 2'-4' seas

Part Number	Description
NC013206	LSS-1 - StructureScan™ Sonar Imaging module with transducer and 6m (20ft) cable
NC00099002	LSS1 - StructureScan™ Sonar Imaging module only

SonicHub Marine Audio Server

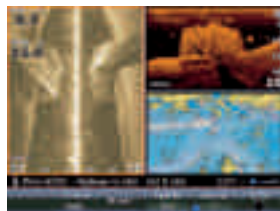
SonicHub™ Marine Audio Server

Take control and experience a revolution in boating entertainment with SonicHub™, the world's first marine audio hub and docking station with a stunning high definition, waterproof colour display. Simple to install, SonicHub™ integrates seamlessly with Lowrance HDS displays with intuitive and stylish graphical user interface.

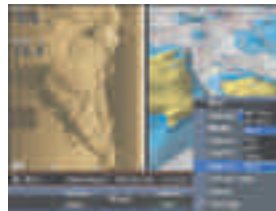


SonicHub™ Features:

- Complete marine grade audio system operated from Lowrance HDS displays through the NMEA 2000® network
- Dock provides a safe waterproof spot for your Apple product with full operational control and charging
- Features 4 x 50W amplifiers and consolidates multiple input/output sources
- Enjoy loud and clear music from Apple iPod, iPhone, iTouch, USB flash drive (MP3), built in global AM/FM radio
- SubWoofer line out
- Includes two 6.5" 200W custom 2 way marine grade speakers with low magnetic technology



iPod media bar



All Audio Source selection showing



Speaker adjustment screen showing Sub Woofer bandpass control

SonicHub™:

Part Number	Description
NC10141001	SonicHub™ - Includes server, dock, speakers, and power / network cables

Accessories:

Part Number	Description
NC10142001	Speaker Pack - Includes 2 x speakers only
NC012469	NMEA 2000 Starter Kit *- Backbone required to install one or more NMEA 2000 sensors - Includes power cable, 2ft cable, 15ft cable, 2 x T-connector, network terminators

*Not required if HUB is being added to an existing NMEA network

See page 19 for a complete list of accessories

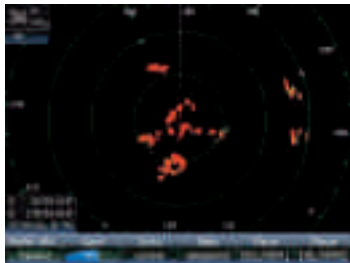
Broadband 4G™ Radar

Lowrance's revolutionary Broadband 4G™ Radar offers all the benefits of the Broadband 3G™ Radar, including a 200' working range, plus some spectacular extra features. The Broadband 4G has an impressive 50% improvement in range and target detection capability with a new 36 nautical mile range and 18 range scales to accommodate the increased performance. Broadband 4G is the first dome antenna to employ beam sharpening. This technology improves the azimuth resolution - or effective antenna horizontal beam width - up to the 2x resolution of an 18" dome. This is the equivalent of a 3 1/2 ft open array radar! When paired with the HDS series, the Broadband 4G Radar is capable of high speed operation, up to 36 RPM. The 4G all round performance results, including exceptional clutter rejection, are nothing short of mind blowing, dramatically increasing situational awareness among novice and professional users alike, thus proving the Broadband 4G Radar is the only on water radar choice.

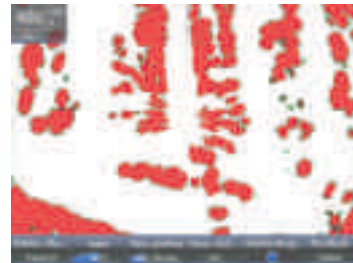


Broadband 4G™ Radar Features:

- 2.6 ° effective horizontal beam width, up to 36nm
- Up to 36RPM, mode and range dependent
- Crystal clear image of your surroundings with hands-off AUTO Harbour/Offshore modes
- Extremely low radiation allows mounting almost anywhere
- Low power consumption
- InstantOn™ with no tuning required
- 10 MARPA targets, Dual EBL/VRM and Dual Guard Zones



Broadband 4G provides an additional 36nm usable display range as shown on HDS with solid land targets greater than 27nm than 27nm away in Auto



Exceptional target resolution is seen in a busy harbour with split radar plus overlay mode

Broadband 4G™ Radar and Accessories:

Part Number	Description
NC10419001	4G Radar Kit - Broadband 4G Radar radome for HDS - Including 10m scanner cable, RI10 interface box with NMEA 2000 and ethernet adaptor cable 2m (6.5ft)
NC22090195	RC42 - Rate gyro fluxgate compass (Simrad branded) with a 5m SimNet cable. Must be used for MARPA information
NCSC20	SC20 Mast Mount Kit for Broadband Radar
NCLMBA1	LMB A1 Self-Levelling Radar Backstay Mount for Broadband Radar
NC010211	Broadband Radar External Scanner Cable 10m (32.8ft)
NC010212	Broadband Radar External Scanner Cable 20m (65.6ft)
NC010213	Broadband Radar External Scanner Cable 30m (98.4ft)
NC010189	RI10 Interface Junction Box for Waterproof Installation. Also provides heading input for systems with NMEA 2000 backbone (SimNet)

See page 19 for a complete list of accessories

Broadband 3G Radar

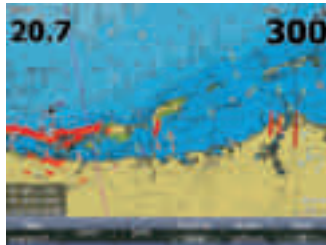
Broadband 3G™ Radar

Lowrance Broadband Radar A.K.A. frequency modulated continuous wave (FMCW) radar is nothing new, but it was when Lowrance first launched the technology in 2009. Lowrance developed a radar with superior short range target detection and unrivalled target separation. Armed with this new technology, boaters received a previously unseen level of situational awareness to improve safe navigation in any state of visibility. Broadband 3G Radar will undoubtedly mark the beginning of the end of the conventional pulse radar on recreational craft as the newest 3G boasts a massive 30% increase in range over the original BR24 while retaining its impressive short range credentials.

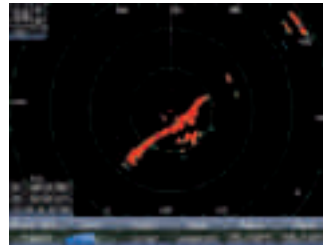


Broadband 3G™ Radar Features:

- New longer range capability - 30% more than Lowrance's previous radar with 2x transmit power, maintaining 200' (50m) short range
- Crystal clear image of your surroundings with hands-off AUTO Harbour/Offshore modes
- Extremely low radiation allows mounting almost anywhere
- Low power consumption, ideal for sailboats
- InstantOn™ with no tuning required
- 10 MARPA targets and Dual Guard Zones



Broadband 3G seeing Tarpon Spring Power Plant Stack at >15nm away



Broadband 3G with HDS in Radar Only mode to see the same Stack

Broadband 3G™ Radar :

Part Number	Description
NC10435001	3G Radar Kit - Broadband 3G Radar radome for HDS - Including 10m scanner cable, RI10 interface box and yellow ethernet cable 1.8m (6ft))
NC22090195	RC42 - Rate gyro fluxgate compass (Simrad branded) with a 5m SimNet cable. Must be used for MARPA information
NCSC20	SC20 Mast Mount Kit for Broadband Radar
NCLMBA1	LMB A1 Self-Levelling Radar Backstay Mount for Broadband Radar
NC010211	Broadband Radar External Scanner Cable 10m (32.8ft)
NC010212	Broadband Radar External Scanner Cable 20m (65.6ft)
NC010213	Broadband Radar External Scanner Cable 30m (98.4ft)
NC010189	RI10 Interface Junction Box for Waterproof Installation. Also provides heading input for systems with NMEA 2000 backbone (SimNet)

See page 19 for a complete list of accessories

High Definition Digital Radars

Advanced Lowrance digital-signal processing in high definition radome choices for HDS. Fast, detailed radar detection of even small and distant targets with superb accuracy in the dark, rain and fog alike. Compact, dependable and high performance, both network through high speed Ethernet connectivity for onboard radar display sharing.

For use with Lowrance HDS and older LCX series of products.



NC012138 - LRA-1800



NC012139 - LRA-2400



NC10366001 - TX06L-1HD

High Definition Digital Radar Features:

- Interfaces charts and radar detail in a single, detail-rich display when coupled with an optional, compatible NMEA 2000 heading sensor
- Automatic tune, gain and sea clutter adjustment
- Dual Guard Zone Alerts for targets entering user defined scan area
- Digital Sensitivity Time Control curves reject clutter with setting of return strength/distance thresholds
- Colour palette choices for improved target distinction based on viewing conditions
- 10 MARPA targets

High Definition Digital Radar and Accessories :

Part Number	Description
NC012138	LRA-1800 HD Digital Radar - 2kW 18" Radome with installed 15m scanner cable, ethernet yellow male to RJ45 female cable 2m (6.5ft), RJ45 male to male 0.5m cable
NC012139	LRA-2400HD Digital Radar - 4kW 24" Radome with 15m scanner cable, ethernet yellow male to RJ45 female cable 2m (6.5ft), RJ45 male to male 0.5m cable
NC10366001	TX06L-1HD Digital Radar - 6kW 4" Open Array with 20m (66ft) scanner cable and radar processor, ethernet cable adaptor for 5p yellow male to RJ45 female 2m (6.5ft) cable, RJ45 male to male 2m (6.5ft) cable
NC22090195	RC42 - Rate gyro fluxgate compass (Simrad branded) with a 5m SimNet cable. Must be used for MARPA information
NCSC12	Mast Mount Kit for 2kW 18" Radome
NCSC21	Mast Mount Kit for 4kW 24" Radome
NCLMBA2	LMB-A2 Self-levelling Radar Backstay (aft) mount for 2kW 18" Radome
NC010211	Broadband Radar External Scanner Cable 10m (32.8ft)
NC010212	Broadband Radar External Scanner Cable 20m (65.6ft)
NC010213	Broadband Radar External Scanner Cable 30m (98.4ft)

See page 19 for a complete list of accessories

AIS Class-B Systems

Greatly reduce the risk of collisions with NAIS-300. Automatic Identification Systems are a new type of safety equipment that enables you to see and be seen at sea which is a serious concern in today's congested sea ports and busy ocean shipping lanes. AIS focuses your awareness on all vessels with AIS in the vicinity and helps reduce the risk of collision by exchanging safety data between vessels.

AIS Features:

- Black Box Class-B AIS Transponder System with GPS receiver
- NMEA 2000 / NMEA 0183 (high speed) interface
- AIS Transmit and Receive function (AIS Class-B)



AIS Class-B Systems:

Part Number	Description
NC013504	NAIS-300L Class-B AIS with NMEA 2000 interface (GPS antenna included)
NC012469	NMEA 2000 Starter Kit *- Backbone required to install one or more NMEA 2000 sensors - Includes power cable, 2ft cable, 15ft cable, 2 x T-connector, network terminators*

*Required only if NAIS-300L is the only sensor on the network. Not required if HUB is being added to an existing NMEA network
 Note: A VHF AIS antenna with PL259 is required for AIS operation

See page 19 for a complete list of accessories

Navionics

Navionics Electronic Charts comprise the world's largest "seamless" marine electronic chart database. Navionics charts are available in a variety of formats including PLATINUM+™, PLATINUM™, GOLD™ and CLASSIC™. Simply insert into your Lowrance HDS chartplotter for the greatest possible detail.

Platinum+ Charts

Multi-dimensional marine charts that offer navigators and fishermen a selection of bonus information beyond the best available navigation charts such as panoramic pictures. 3D/2D views with satellite imagery, coast pilot guides, POIs and built-in offshore fishing detail.



Gold Charts

2 dimension Gold marine charts are the navigation standard for serious mariners and fishermen offering the largest coverage areas for the widest range of today's most popular chartplotters. Features include tides, currents, wrecks, port plans, marsh areas, marine services, coastal roads and much more. Whether you are on the water or planning a trip, Navionics Gold charts can take you there.

Part Number	Description
NA5P391XL	Platinum + XL - Strait of Dover
NA5P392XL	Platinum + XL - English Channel
NA5P393XL	Platinum + XL - Irish Sea
NA5P394XL	Platinum + XL - Ireland
NA5P396XL	Platinum + XL - Scotland West
NA5P397XL	Platinum + XL - Eastern UK
NA25P+	Platinum + XL3 - UK South-Hamburg
NA28P+	Platinum + XL3 - UK & Ireland
NA5G556S2	Gold - Ile de Batz-Carentan
NA5G557S2	Gold - Jersey-Le Treport
NA5G558S2	Gold - St Valery-Zeebrugge
NA5G559S2	Gold - Tenby-Exmouth
NA5G560S2	Gold - Falmouth-Weymouth
NA5G561S2	Gold - Start Point-Chichester
NA5G562S2	Gold - Keyhaven-Rye Harbour
NA5G563S2	Gold - Littlehampton-Walton
NA5G564S2	Gold - Burnham-Scarborough
NA5G565S2	Gold - Grimsby-Anstruther
NA5G566S2	Gold - Scotland East
NA5G567S2	Gold - Scotland North West
NA5G568S2	Gold - Scotland West
NA5G569S2	Gold - Isle of Jura-Barmouth
NA5G570S2	Gold - Liverpool-Gower
NA5G571S2	Gold - Ireland East
NA5G572S2	Gold - Ireland South
NA5G573S2	Gold - Ireland West
NA5G574S2	Gold - Ireland North West
NA5G575S2	Gold - Ireland North
NA5G576S2	Gold - Shannon-Erne
NADWL001	Gold Download - Small
NA28XG	Gold XL9 - UK-Ireland & Holland
NA46XG	Gold XL10 - Iberia-Germany

LVR-880 DSC - NC002222

VHF & FM, NMEA 2000 Fixed Mount Marine Radio

The first with an FM and NMEA 2000® interface for Track-Your-Buddy®. Plus other premium features in an exceptional 25W/1W DSC marine radio.

- VHF with stereo FM radio receiver with dual audio amps
- All international/cloned country-specific VHF channels with ATIS for inland waterways
- Exclusive Track-Your-Buddy feature connects DSC position via NMEA to show the location of up to three boating friends on the GPS chart display
- Full Class-D automatic distress operation with high-res position polling and group calling via NMEA 0183/ NMEA 2000® output to chartplotters
- Immediate GPS boat position and time when connected to a compatible GPS chartplotter
- Simplified intercom with talkback plus built-in 22 whailer-horn
- Extra-large and bright custom FSTN full-matrix screen with lat/lon position display without scrolling
- Large 2.24" (57mm) speaker for great audio output when running at high speed
- Case and microphone fully waterproof (JIS 7 submersible)
- Flush-mount kit and dust cover included



LVR-250 DSC - NC002221

VHF Fixed Mount Marine Radio

Solid reliability and attractive features without the high price in a high-quality 25W/1W fixed-mount VHF marine radio with DSC.

- All international/cloned country-specific VHF channels with ATIS for inland waterways
- Full Class-D automatic distress operation with high-res position polling and group calling via NMEA 0183/ NMEA 2000® output to chartplotters
- All channel naming, instant three favourite channels access with scan, Local/Distant eliminates interference
- Rotary channel control with push to enter
- Immediate GPS boat position and time when connected to a compatible GPS chartplotter
- Large and clear, 4 line backlit screen, lat/lon displayed without scrolling
- Large chassis speaker for great audio output when running at high speed
- Case and microphone fully waterproof (JIS 7 submersible)
- Flush-mount kit and dust cover included



LHR-80 - NC002247

VHF/GPS Handheld Marine Radio

Advanced and affordable 5/1W waterproof VHF handheld. A great way to make sure you get back to shore safely. Great as a back up radio, it features built-in 12 channel GPS receiver, trackplotter, Great Circle navigation and more. Plus, it floats!

- Fully waterproof/submersible and floats in sea water
- All international/cloned country-specific VHF channels with ATIS for inland waterways
- Large backlit LCD bitmapped screen maximises viewing, 4-bar battery life indicator
- Built-in 12 channel GPS with lat/lon output, trackplotter display, waypoint icons and cursor control
- Long life, high capacity, Li-Polymer rechargeable battery with rapid charger (under 3 hours)
- Great Circle Navigation with NMEA 0138 data transfer to external chartplotter when in cradle
- Backlit function keys: instant GO/MOB key and 16 key with keylock
- Volume, channel and SQL control with up/down cursor; SMA antenna connector



Part Number	Description
NC002222	LVR-880 Fixed Mount VHF/FM Radio with NMEA 2000
NC002221	LVR-250 Fixed Mount VHF Radio
NC002247	LHR-80 Handheld VHF Radio with GPS/ATIS
NC10001001	Sun Cover for LVR-250 Fixed Mount VHF Radio
NC10002001	Sun Cover for LVR-880 Fixed Mount VHF/FM Radio with NMEA 2000
NC001653	1400 mAh Li/Ion Battery Pack for LHR-80 Handheld VHF Radio with GPS/ATIS

NMEA 2000 Accessories

Part Number	Description
NC011931	NMEA 0183 Adaptor Cable
NC011975	NMEA 2000 Power Node
NC011979	NMEA 2000 T Connector
NC011986	4.55m/15ft NMEA 2000 Cable
NC011988	0.61m/2ft NMEA 2000 Cable
NC012029	Pressure Sensor - 3.04m/10ft Cable and T Connector
NC012037	Yamaha Interface Cable - 4.55m/15ft Cable and T Connector
NC012039	Fuel Flow Sensor - 3.04m/10ft Cable and T Connector
NC012041	Fluid Level Sensor - 3.04m/10ft Cable and T Connector
NC012062	Evinrude Interface Cable - 3.04m/10ft Cable and T Connector
NC012073	Fuel Usage/Range Sensor - Evinrude 3.04m/10ft Cable and T Connector
NC012469	NMEA 2000 Starter Kit
NC012752	Set of 1 Male and 1 Female NMEA 2000 Terminators
NC012753	1.82m/6ft NMEA 2000 Cable

HDS Accessories

Part Number	Description
NC00099003	StructureScan Transducer - Plastic Thru Hull
NC00099004	StructureScan Transducer - Trolling Motor Mount Bracket
NC00099005	Skimmer Mount Transducer Bracket
NC010080	Ethernet RJ45 Male/Male Cable 2m/6.5ft
NC10029001	Network Expansion Port

Additional Lowrance Accessories

Part Number	Description
NC005181	Bracket Knobs for Pre 2009 Products
NC005183	Gimbal Bracket Swivel Adapter
NC010180	Bracket Knobs for 5in Units Excluding HDS
NC010198	Gimbal Bracket for X 52 and X 59 DF
NC010199	Gimbal Bracket for X 96, X 125, X 135 and X 136DF
NC011303	Flush Mount Kit for X 52 and X 59 DF
NC011316	Gimbal Bracket X 67C, M 52 and M68C
NC011320	Flush Mount Kit
NC011375	Gimbal Bracket for LCX Global Map 7/8/10
NC012456	Gimbal Knobs - Set of Two
NC012457	Gimbal Bracket for HDS 5
NC012458	Gimbal Bracket for HDS 7
NC012459	Gimbal Bracket for HDS 8
NC012460	Gimbal Bracket for HDS 10
NC012528	LGC 4000 High Sensor GPS WAAS Antenna with 5Hz Update Rate
NC012704	Adaptor Cable
NC012705	Adaptor Cable
NC012751	1.82 m 6 ft Ethernet cable
NC012729	4.55 m 15 ft Ethernet cable
NC012730	7.58 m 25 ft Ethernet cable
NC012737	15.15 m 50 ft Ethernet cable
NC012741	AC Adaptor
NC012745	SimNet to N2K Adaptor Kit

Additional Lowrance Accessories

Part Number	Description
NC012708	Power Cable
NC009983	Power Cable for Elite 5m
NC012749	Power Cable for HDS Series
NC012754	Power Cable for BSM 1/LBS 1
NC10202001	StructureScan Transducer Y Cable
NC011910	Cigarette Plug Power Cable for 5in and Above, Excluding X 96
NC00099007	Skimmer Mount Transducer
NC012470	Set of Connector Caps - HDS Series
NC012479	SD Card Door Replacement for HDS 5/HDS 5m/HDS 5x
NC012480	SD Card Door Replacement for HDS 7/HDS 7m
NC012481	SD Card Door Replacement for HDS 8/HDS 8m
NC012482	SD Card Door Replacement for HDS 10/HDS 10m
NC00021001	Bronze 600W Thru Hull 50/200 Transducer Depth/Temp
NC00146001	Elite GPS Antenna 20ft Cable
NC004626	Transponder Switch box
NC005152	Suction Cup Kit
NC009906	Mounting Kit
NC009975	Transom Mount 83/200 skimmer
NC009977	Temp Sensor for Mark and Elite
NC010648	83/200 Skimmer Transducer Temp and 20ft cable
NC010649	50/200 Transom Mount Skimmer with Uniplug Connector
NC010650	83/200 Pod style Transducer Temp and 10ft cable
NC010652	83/200 pod style Transducer no Temp with 20ft cable
NC010669	83/200 Pod style Transducer Remote Temp and 20ft cable
NC010671	83/200 Transom Mount Skimmer with Blue Connector
NC010672	83/200 Transom Mount Skimmer/Temp
NC010673	83/200 Shoot Thru Skimmer with Blue Connector
NC010674	83/200 Trolling Motor Mount Skimmer/ Temp Blue Connector
NC010677	50/200 Transom Mount Skimmer/Temp Blue Connector
NC010682	Bronze Thru Hull 50/200 Depth/Temp
NC010689	83/200 Shoot Thru/Trolling Motor Mount Skimmer Remote Temp
NC010691	Plastic in Hull 50/200 Transducer
NC011302	Bracket Knobs for X 52/X 59 DF
NC013600	Bronze Thru Hull 50/200 Depth/Temp
NC013602	Plastic Thru Hull 50/200 Transducer Depth/Temp
NC013603	Plastic in Hull 50/200 Transducer Depth Only
NC013605	Bronze Thru Hull 50/200
NC10030001	Elite/Mark Portable Power pack 5" Models Suction Cup Transducer
NC10247001	Bronze Low Profile Thru Hull 1kW 50/200 Depth/Temp
NC10248001	Bronze Thru Hull 83/200 Transducer Depth/Temp
NC10260001	DSI Skimmer Transducer 455/800 Temp
NC10364001	Bronze StructureScan Thru Hull Transducer
NC10365001	StructureScan Dual Bronze Transducer Kit
NC10393001	Fairing Block StructureScan Sonar Bronze Thru Hull Trans
NC22090195	RC42 Rate Gyro Fluxgate Compass for MARPA Operation
NC22098552	Plastic Retractable Thru Hull 235 Transducer Depth/Speed/Temp
NC009991	15ft Sonar Extension Cable
NC009996	Transom Mount Paddlewheel Speed Sensor
NC009997	Transom Mount Paddlewheel Speed/Temp Sensor





Fendress Fender Covers

Covers to fit Polyform Fenders	22
Covers to fit Anchor Fenders	22

Fendress

Fendress Fender Covers

Manufactured in their factory in France, the Fendress range of fender covers are UV treated to ensure a high resistance to UV light.

Available in a variety of colours and sizes to suit most shapes and sizes of fenders on any craft - sailing yacht, motorboat or superyacht.

- Lifetime: 3500 hours of UV
- Real time: 7 00 hours
- 100% Acrylic treated against UV
- Effectively protect the hull
- Thick and flexible
- Enhance the look of your boat
- Easy to fit
- Machine washable



Part Number	Dimensions (L x Dia) cm	Colour	To Fit Fender	Pack Quantity
Q084086	56 x 13	Royal Blue	Fits Polyform F1 Fenders	Pair
Q084088	56 x 13	Black	Fits Polyform F1 Fenders	Pair
Q084090	56 x 13	Navy	Fits Polyform F1 Fenders	Pair
Q084120	101 x 23	Navy	Fits Polyform F4 Fenders	Pair
Q084124	145 x 60	Navy	Fits Polyform F11 Fenders	Each
Q084125	104 x 38	Navy	Fits Polyform F7 Fenders	Each
Q084126	92 x 70	Navy	Fits Polyform A5 Fenders	Each
Q084123	49 x 39	Royal Blue	Fits Polyform A2 Fenders	Pair
Q084096	60 x 20	Royal Blue	Fits Anchor 0091/0092/0073/0074	Pair
Q084098	60 x 20	Black	Fits Anchor 0091/0092/0073/0074	Pair
Q084100	60 x 20	Navy	Fits Anchor 0091/0092/0073/0074	Pair
Q084106	85 x 23	Royal Blue	Fits Anchor 0457/0458/0459/0460	Pair
Q084108	85 x 23	Black	Fits Anchor 0457/0458/0459/0460	Pair
Q084110	85 x 23	Navy	Fits Anchor 0457/0458/0459/0460	Pair
Q084122	85 x 23	Red	Fits Anchor 0457/0458/0459/0460	Pair
Q084127	38 x 33	Navy	Fits Anchor Buoy 0315/0316/0317	Pair
Q084128	53 x 40	Black	Fits Anchor Buoy 0321/0324/0322	Pair
Q084129	53 x 40	Navy	Fits Anchor Buoy 0321/0324/0322	Pair
Q084130	67 x 53	Navy	Fits Anchor Buoy 0331/0334/0332	Pair
Q084131	43 x 11	Navy	Fits Anchor 0071/0072	Pair
Q084132	91 x 35	Black	Fits Anchor 0111/0112/0453/0454	Pair
Q084133	91 x 35	Navy	Fits Anchor 0111/0112/0453/0454	Pair



OverBoard Waterproof Cases & Bags

Waterproof Technology Cases	24
Waterproof Multipurpose Cases	25
Waterproof Bags	26
Waterproof Pouches	27
Waterproof Bags	28

Scanstrut iPad Cases

Waterproof iPad Cases	29
-----------------------	----

Bainbridge Saicloth Bags

Sail Number Bags	29
------------------	----

Gerber Knives, Multi-Tools & Torches

Knives	30 - 33
Multi-Tools	33 - 37
Accessories	37 - 38
Torches	38
Bear Grylls Survival Series	39 - 41

LAHNA Oars, Paddles & Flagstuffs

Oars	42
Paddles	43
Flagstuffs	43

Trem Boat Accessories

Boat Covers	44
Engine Covers	44
Gas Springs	44
Sun Blinds	45
Binoculars	45
Folding Pilot Seat	45
Gangways	45

Attwood Seating Systems

Venture Folding Seat	46
PROForm Folding Seat	46
SeaSport Seat Mounts	47
SeaSport Bell Pedestals, Fixed	47
SeaSport Bell Pedestals, Adjustable	47

Trident Marine Hoses

Marine Hose Centre	48
Marine Hoses	48

Bainbridge Marine SUP

Inflatable Paddle Board	49
-------------------------	----



100% Waterproof Technology Cases

Want to take a gadget to the boat, beach or pool without risking total destruction? Pop it in an OverBoard waterproof case.

Designed with active adventures in mind, OverBoard waterproof cases are fully submersible and allow full use of the device while it is safely sealed inside.

All cases come with a neck lanyard or shoulder strap, a carabiner clip and moisture sensitive desiccant sachets.

Weatherproof Store Rating System™

- ① Water resistant for light rain or light splash applications
- ② Weatherproof in top-down watering applications
- ③ Waterproof so tight it floats or can handle quick submersions
- ④ Waterproof and submersible to at least 3 feet but no more than 12 feet
- ⑤ Waterproof and submersible to depths greater than 12 feet*

*Maximum depth of 19 feet for OverBoard products.

Mobile Phone & GPS/PSP Cases ⑤

Stay connected with an OverBoard mobile phone case. Designed so you can make or take calls while your phone is safely sealed within the waterproof case. With full use of touch screen functions and different sizes for iPhones, flip phones and more; these handy waterproof cases let you stay connected wherever you are.

Please refer to www.over-board.co.uk for full mobile phone compatibility.



Part Number	Description	Colour	Height: cm	Waist: cm
OB1008A	Small Phone Case - iPhone, Blackberry, HTC, Galaxy S2	Aqua	12.5	15
OB1008BLK	Small Phone Case - iPhone, Blackberry, HTC, Galaxy S2	Black	12.5	15
OB1098BLK	Smart Phone Case - iPhone, Blackberry, HTC, Galaxy S2	Black	12.5	15
OB1065A	Large Phone Case - Motorola Razor, Blackberry Torch	Aqua	15	18
OB1065BLK	Large Phone Case - Motorola Razor, Blackberry Torch	Black	15	18
OB1009BLK	Waterproof GPS / PSP Case	Black	17	20

VHF Cases ⑤

Keeping your trusty VHF radio protected against water and sand while you still have full use of it is now possible thanks to these specially designed waterproof VHF cases. Compatible with right or left handed antennas, these waterproof cases also float if dropped in water and provide full sound quality through the case.



Part Number	Description	Colour	Height: cm	Waist: cm
OB1035BLK	Small VHF Case with Right or Left Handed Antenna	Black	33	22
OB1036BLK	Large VHF Case with Right or Left Handed Antenna	Black	38	22

Camera Cases ⑤

Waterproof camera cases for all types of cameras. Zoom lens or compact, OverBoard's waterproof camera cases will protect any type of digital camera from water, sand, dirt and dust. Not only that, but you still have full use of the camera while it is safely sealed within its case. And because the camera cases are fully submersible, you can even try your hand at some underwater photography!



Part Number	Description	Colour	Length: cm	Waist: cm
OB1025BLK	Waterproof Camera Case	Black	11	17.5
OB1052BLK	Waterproof Zoom Lens Camera Case*	Black	11	20.5

*Zoom measures 4.3cm wide x 2.8cm long when fully extended.

Large Gadget Cases ⑤

Take your iPad on your water-based or beach missions with the waterproof case from OverBoard which offers full use of the device while it is safely sealed away.

The waterproof eBook case is perfect for on-deck reading and fully protects your eBook reader from water, sand and dirt.

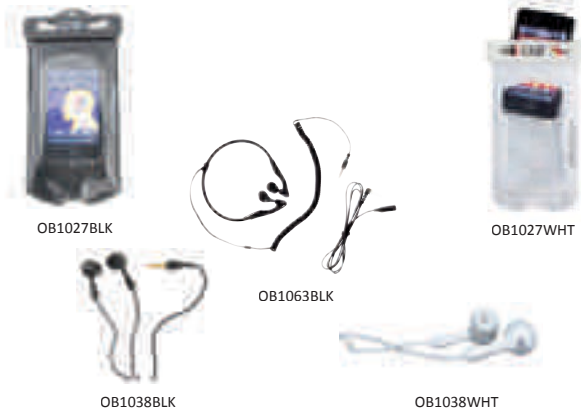


Part Number	Description	Colour	Length: cm	Waist: cm
OB1086BLK	Waterproof iPad Case - iPad 1 & 2, Galaxy Tab, HP Slate	Black	25	42
OB1082BLK	Waterproof eBook Reader Case - Kindle, Playbook, Galaxy Tab	Black	20	31

Waterproof Multipurpose Cases

Music Cases and Headphones ⑤

Whether you are sailing, kitesurfing, swimming or simply clumsy on a boat, OverBoard's waterproof MP3 cases and headphones protect your player so you can listen to your music on or in the water. Supplied with a handy sports arm strap.



Part Number	Description	Colour	Length: cm	Waist: cm
OB1027BLK	Pro-Sports Waterproof iPod/MP3 Case	Black	12.5	15
OB1027WHT	Pro-Sports Waterproof iPod/MP3 Case	White	12.5	15
OB1063BLK	Pro-Sports Waterproof Headphones	Black	-	-
OB1038BLK	Waterproof Earphones	Black	-	-
OB1038WHT	Waterproof Earphones	White	-	-

Multipurpose Cases ⑤

With different sizes available, OverBoard has a case for every need, from cash and keys all the way up to iPads. All multi-purpose cases feature the Slide Seal System™, designed to keep everything out!



Part Number	Description	Colour	Length: cm	Waist: cm
OB1067F	Multipurpose Waterproof Case - Small	Frosted	12	15
OB1066F	Multipurpose Waterproof Case - Medium	Frosted	17	20
OB1088F	Multipurpose Waterproof Case - Large	Frosted	20	31
OB1073F	Multipurpose Waterproof Case - Jumbo	Frosted	25	42
OB1051BLK	Pro-Sports Waterproof Arm Pack	Black	12	13
OB1050BLK	Pro-Sports Waterproof Belt Pack	Black	20	17

Waterproof Dry Tubes ③

Made from hard-wearing PVC tarpaulin, OverBoard dry bags are fully submersible and easy to wipe clean, so they're up to some rough usage during sailing or other activities. Supplied with a handy shoulder strap, with plenty of sizes and colours to choose from.



Part Number	Description	Colour	Height: cm	Dia: cm	Circum: cm	Capacity: Litres
OB1001B	Waterproof Dry Tube Bag	Blue	24	19	58.5	5
OB1001BLK	Waterproof Dry Tube Bag	Black	24	19	58.5	5
OB1001Y	Waterproof Dry Tube Bag	Yellow	24	19	58.5	5
OB1003R	Waterproof Dry Tube Bag	Red	40	19	58.5	12
OB1003Y	Waterproof Dry Tube Bag	Yellow	40	19	58.5	12
OB1005B	Waterproof Dry Tube Bag	Blue	40	24	74	20
OB1005BLK	Waterproof Dry Tube Bag	Black	40	24	74	20
OB1005P	Waterproof Dry Tube Bag	Pink	40	24	74	20
OB1005Y	Waterproof Dry Tube Bag	Yellow	40	24	74	20
OB1006R	Waterproof Dry Tube Bag	Red	42	29	91.5	30
OB1006Y	Waterproof Dry Tube Bag	Yellow	42	29	91.5	30
OB1007B	Waterproof Dry Tube Bag	Blue	56	29	91.5	40
OB1007R	Waterproof Dry Tube Bag	Red	56	29	91.5	40
OB1007Y	Waterproof Dry Tube Bag	Yellow	56	29	91.5	40
OB1055BLK	Waterproof Dry Tube Bag	Black	70	31	96	60
OB1057Y	Waterproof Dry Tube w/Window	Yellow	40	24	74	20
OB1058BLK	Waterproof Dry Tube w/Window	Black	42	29	91.5	30
OB1056BLK	Waterproof Dry Tube w/Window	Black	70	31	96	60

Note: Dimensions quoted are for a sealed tube after rolling neck over plastic fastener 3 times. Add roughly 20cm for the bag's open height.



Waterproof Bags

Waterproof Dry Flat Bags 3

Where space and weight are a factor, an OverBoard dry flat bag provides the perfect waterproof solution. Made of super-lightweight but durable material, dry flat bags fold to almost nothing when not in use and keep contents fully protected from water, sand and dirt when they are.



Part Number	Description	Colour	Height: cm	Width: cm	Capacity: Litres
OB1002BLK	Waterproof Dry Flat Bag	Black	23	27	5
OB1002Y	Waterproof Dry Flat Bag	Yellow	23	27	5
OB1004BLK	Waterproof Dry Flat Bag	Black	35	37	15
OB1004R	Waterproof Dry Flat Bag	Red	35	37	15
OB1026BLK	Waterproof Dry Flat Bag	Black	50	37	30
OB1026B	Waterproof Dry Flat Bag	Blue	50	37	30

Waterproof Backpacks 3

The ultimate in waterproof portability. Keeping hands free and gear dry is a useful combination. Made of durable material and with a hardy roll top design, OverBoard waterproof rucksacks are fully submersible and comfortable to wear.

Features include padded shoulder straps and lumbar support, comfortable back panel with air-flow design, large internal zip pocket and the pro-sports waterproof backpack features a large front mesh zip pocket.



Part Number	Description	Colour	Height: cm	Width: cm	Depth: cm	Capacity: Litres
OB1053Y	Waterproof Backpack	Yellow	43	24	16.5	20
OB1054B	Waterproof Backpack	Blue	49.5	34	16.5	30
OB1047C	Waterproof Backpack	Carbon	49.5	34	16.5	30
OB1095Y	Pro-Sports Waterproof Backpack	Yellow	43	24	16.5	20
OB1095B	Pro-Sports Waterproof Backpack	Blue	43	24	16.5	20
OB1096R	Pro-Sports Waterproof Backpack	Red	43	24	16.5	30
OB1096BLK	Pro-Sports Waterproof Backpack	Black	43	24	16.5	30

Waterproof Messenger Bags 3

OverBoard's 100% waterproof messenger bags feature a trusty roll top design so not a drop of water can get in. Suitable for a quick dunking and made of hardwearing materials, this makes them the perfect Waterproof Laptop Bags for water-based sports.



Part Number	Description	Colour	Height: cm	Width: cm	Depth: cm
OB1046C	Waterproof Carbon Messenger Bag	Carbon	33	40.5	9
OB1092BLK	Roll-Top Messenger Bag	Black	33	40.5	9

Waterproof Waist Packs 3

Designed with your active adventures in mind, these waterproof waist packs can take a quick dunking, so if you do go overboard, your stuff is safe - it floats too.

Complete with a bottle holder and water resistant front zip pocket, these waist bags are perfect for all-weather activities.



Part Number	Description	Colour	Height: cm	Width: cm	Depth: cm	Capacity: Litres
OB1049BLK	Waterproof Waist Pack	Black	13	19	7.5	3
OB1049Y	Waterproof Waist Pack	Yellow	13	19	7.5	3
OB1048C	Waterproof Waist Pack	Carbon	13	19	7.5	3



Waterproof Duffel Bags ③

OverBoard waterproof duffel bags will stay fully waterproof during a quick dunking and will keep contents dry and dirt-free. Each duffel features a handy roll top closure with a wide mouth opening for easy access, making them the ultimate waterproof bags for boating and other watersports.



Part Number	Description	Colour	Height: cm	Width: cm	Depth: cm	Capacity: Litres
OB1012B	Waterproof Duffel Bag	Blue	27	67	32	60
OB1012Y	Waterproof Duffel Bag	Yellow	27	67	32	60
OB1012R	Waterproof Duffel Bag	Red	27	67	32	60
OB1012BLK	Waterproof Duffel Bag	Black	27	67	32	60
OB1089Y	Waterproof Duffel Bag	Yellow	23	52	32	40
OB1089B	Waterproof Duffel Bag	Blue	23	52	32	40

Waterproof Ninja Duffel Bag ③

This 130 litre duffel bag is made from super tough military grade materials. Features include a large wet/dry pocket and two more internal mesh zip pockets to easily separate and locate smaller items, as well as a padded shoulder strap and rubber haul handles.



Part Number	Description	Colour	Height: cm	Width: cm	Depth: cm	Capacity: Litres
OB1045BLK	Waterproof Ninja Duffel Bag	Black	33	86	42	130

Waterproof SLR Camera Bag ③

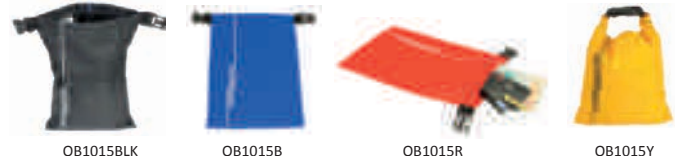
Take your SLR camera safely on all your adventures with the waterproof SLR camera bag, featuring a handy adjustable shoulder strap and a protective inner lining. Made from tough PVC tarpaulin, this waterproof camera bag seals tight with the Fold Seal System™ and with welded seams it offers full protection from water, sand and dirt.



Part Number	Description	Colour	Height: cm	Width: cm	Depth: cm	Capacity: Litres
OB1087BLK	Waterproof SLR Camera Bag	Black	22	17	12	7

Waterproof Dry Pouch ②

OverBoard's waterproof pouches keep small valuables safe. Perfect for beach and boat, these small 1 litre waterproof pouches keep out water, sand and dirt so you can relax. Made of super durable materials and with a handy roll top closure, these tough little waterproof bags snap to your belt or bag for easy portability.



Part Number	Description	Colour	Height: cm	Width: cm	Capacity: Litres
OB1015BLK	Waterproof Dry Pouch	Black	11.5	15	1
OB1015B	Waterproof Dry Pouch	Blue	11.5	15	1
OB1015R	Waterproof Dry Pouch	Red	11.5	15	1
OB1015Y	Waterproof Dry Pouch	Yellow	11.5	15	1

Waterproof Bike Panniers ③

Keep your gear dry and mud-free with OverBoard's 100% waterproof bike panniers.

Handlebar pannier - Roll top for tight sealing, reflective strips for increased visibility.
Front wheel pannier set - A set of two 12 litre bike bags made from PVC tarpaulin.
Back wheel pannier set - A set of two 16 litre bike bags made from PVC tarpaulin.



Part Number	Description	Colour	Height: cm	Width: cm	Depth: cm	Capacity: Litres
OB1075BLK	Waterproof Handlebar Panniers	Black	20	26	13.5	6
OB1076BLK	Waterproof Front Wheel Panniers	Black	37	25	13	24
OB1077BLK	Waterproof Back Wheel Panniers	Black	32	33	15	32

Waterproof Map Pouch ③

Using a fast zip lock sealing system, this A4 document pouch is not only suitable for quick submersion, but will protect your vital documents from sand & dirt and UV sun & frost damage too. That means you can navigate your way through any adventure! Featuring transparent front and back windows so you can read the contents from both sides. Complete with four D-rings for multiple attachment options, this handy waterproof A4 document case could really save the day.



Part Number	Description	Colour	Height: cm	Width: cm
OB1081BLK	Waterproof A4 Document Pouch	Black	29	21

Kayak Deck Bag ③

OverBoard's waterproof kayak bag is constructed from sturdy & easy to wipe clean PVC tarpaulin and seals tight with the easy to use Fold Seal System™. Add to that welded seams and you've got a waterproof kayak bag that can handle any rapid!

And if you do drop it in the water, this highly visible yellow kayak bag will neatly float to the top so you can get it back easily.



Part Number	Description	Colour	Height: cm	Width: cm	Depth: cm	Capacity: Litres
OB1094Y	Waterproof Kayak Deck Bag	Yellow	43	30	14	20

Note: Dimensions quoted are for a sealed kayak bag after rolling neck over plastic fastener 3 times. Add roughly 20cm for the bag's open height.

Adventure Duffel Bags ①

Hardwearing and stylish, these water resistant bags are the perfect combination of convenient urban design and protection against the elements: Weatherproof zips offer splash-proof protection, while a wide D-zip flap gives you easy access to your gear.

Complete with removable backpack straps, a shoulder strap and grab handles; these weatherproof bags don't just offer protection, but are portable too. Perfect for travelling or outdoor adventures!



OB1091BLK



OB1091WHT



OB1059B



OB1059BLK



OB1059WHT

Part Number	Description	Colour	Height: cm	Width: cm	Depth: cm	Capacity: Litres
OB1091BLK	Adventure Duffel Bag	Black	28	52	28	35
OB1091WHT	Adventure Duffel Bag	White	28	52	28	35
OB1059B	Adventure Duffel Bag	Blue	29	70	39	90
OB1059BLK	Adventure Duffel Bag	Black	29	70	39	90
OB1059WHT	Adventure Duffel Bag	White	29	70	39	90

Adventure Backpacks ①

Constructed of hardwearing PVC tarpaulin, this waterproof rucksack means you can take your laptop and other valuables with you on any adventure. Stashing and accessing your gear is easy in the two main compartments - one including a padded laptop holder and music/media pocket, while the other is perfect for keeping large documents dry.



OB1078BLK



OB1078WHT

Part Number	Description	Colour	Height: cm	Width: cm	Depth: cm
OB1078BLK	Adventure Backpack	Black	50	32	16
OB1078WHT	Adventure Backpack	White	50	32	16

Adventure Messenger Bags ①

With a 100% waterproof welded base, a splash-proof flap and padded walls, these weatherproof bags are perfect for carrying media on the move. Made of tough PVC tarpaulin, this padded waterproof shoulder bag will not only protect against the elements but gives easy access to your gear through a wide zip; with a side zip iPod/media pocket, a pass through hole for your headphones and three more internal mesh pockets as well.



OB1079BLK



OB1079WHT

Part Number	Description	Colour	Height: cm	Width: cm	Depth: cm
OB1079BLK	Adventure Messenger Bag	Black	36	43	12.5
OB1079WHT	Adventure Messenger Bag	White	36	43	12.5

Adventure Laptop Sleeves ①

With a 100% waterproof welded base, a splash-proof flap and padded walls, these weatherproof bags are perfect for carrying media on the move. Made of tough PVC tarpaulin, this padded waterproof shoulder bag will not only protect against the elements but gives easy access to your gear through a wide zip; with a side zip iPod/media pocket, a pass through hole for your headphones and three more internal mesh pockets as well.



OB1069BLK / OB1074BLK



OB1069S / OB1074S

Part Number	Description	Colour	Height: cm	Width: cm	Depth: cm
OB1069BLK	Adventure Laptop Sleeve to Fit 15" Laptop	Black	27	36.5	3
OB1069G	Adventure Laptop Sleeve to Fit 15" Laptop	Silver	27	36.5	3
OB1074BLK	Adventure Laptop Sleeve to Fit 17" Laptop	Black	28.5	40	4
OB1074G	Adventure Laptop Sleeve to Fit 17" Laptop	Silver	28.5	40	4

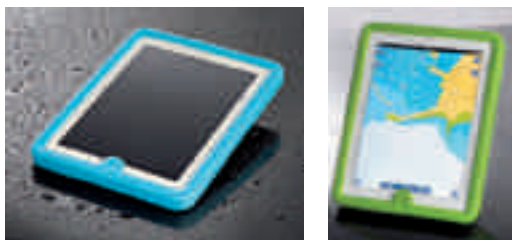
SCANSTRUT®

Waterproof iPad Case

Perfectly designed for life at sea the Waterproof iPad Case enables use of your iPad onboard so you can integrate with your onboard systems and marine electronics.

Ideal for use on sailboats, powerboats, RIBs, commercial vessels and more.

- IP67 Waterproof and shockproof
- Available for both iPad 1 and iPad 2
- Using a semi rigid, two piece case, the design offers maximum protection from water ingress and impact, allowing your iPad to be used outside, in any weather and in any conditions.
- The anti-slip seal gives you additional piece of mind when placed on a chart table or cockpit seat.
- Supplied with an ergonomically designed leather hand strap and suitable for both left and right handed users, you can use your iPad in both portrait and landscape orientation.
- A choice of accessories is available to mount your iPad onto dashboards, rails and more.
- Retains full functionality
- Full touchscreen is available at all times, as are volume, on / off and home buttons. Both front and rear camera functionality is provided for the iPad 2.
- The most compact waterproof iPad case on the market at only 22mm thick, the case is easy to fit and remove and slim enough to be left on permanently.



Waterproof Case for iPad 1

Part Number	Description	Colour
SSWPIP1BU	Waterproof iPad Case for iPad 1	Blue
SSWPIP1GN	Waterproof iPad Case for iPad 1	Green
SSWPIP1GY	Waterproof iPad Case for iPad 1	Grey

Waterproof Case for iPad 2

Part Number	Description	Colour
SSWPIP2BU	Waterproof iPad Case for iPad 2	Blue
SSWPIP2GN	Waterproof iPad Case for iPad 2	Green
SSWPIP2GY	Waterproof iPad Case for iPad 2	Grey



Sail Number Bags

An exciting new range of durable barrel bags manufactured from Bainbridge sailcloth and featuring original polyester insignia sail numbers.

- Available in a variety of convenient sizes, including 24 litres, 43 litres and 75 litres
- Reinforced grab handle
- Durable zip
- Random sail numbers making each bag unique
- Available in grey with red, blue or black sail numbers
- Folds flat for easy stowage



Part Number	Description	Length: cm	Width: cm	Capacity: litres
BMZ1001	Sail Number Bag - Small	50	25	24
BMZ1002	Sail Number Bag - Medium	60	30	43
BMZ1003	Sail Number Bag - Large	70	37	75

Note: Sail numbers may vary in colour / number





Being prepared can be the difference between success or failure, even life or death. Gerber's wide range of knives, tools and equipment is full of one of a kind innovations to ensure when a situation goes south, or there's a problem that needs a solution, you'll be ready.

Gerber stands behind every knife and multi-tool it makes with the industry's strongest warranty. While the details are included with every product, simply put, Gerber will repair or replace any defective product - forever.

All knives are sold in clamshell packaging unless stated otherwise.

Fixed Blade Knives

Gator Fillet 6" Fine Edge

With a full tang stainless steel blade and Gerber's patented Gator Grip™ handle, this knife is easy to handle, whether the conditions are wet or dry.

Comes complete with a hard-molded sheath and built-in ceramic sharpener.

- Handle material: Glass-filled nylon
- Blade material: 420HC stainless steel
- Blade type: Fine
- Lifetime limited warranty
- Includes sheath



Part Number	Description	Overall Length: mm	Blade Length: mm	Weight: grams
GE75230	Gator Fillet 6" Fine Edge	283	152	119

Clip Folding Knives

AR 3.00 Fine Edge

A knife that combines strength, balance, ergonomics, minimal weight and a stylised look. Easily opened with one hand, the AR fine edge knife features silky smooth mechanics and an innovative blend of die-cast aluminium and SoftGrip inserts in the handle.

- Handle material: Die-cast aluminium and SoftGrip inserts
- Blade material: High carbon stainless steel
- Blade type: Fine
- Linear lock mechanism
- Lifetime limited warranty
- Box packed



Part Number	Description	Overall Length: mm	Blade Length: mm	Weight: grams
GE05842	AR 3.00 Fine Edge	157	75	79

E-Z Out Rescue Knife

The E-Z Rescue Knife is designed for scenarios when you need to cut without risk of poking or puncturing adjacent surfaces. The blunt tip will do no harm, yet the serrated blade will cut through materials with no problem. The handle is made of strong thermoplastic reinforced with fibreglass.

- Lock mechanism: Lock back
- Blade style: Clip point
- Opening style: One handed opening
- Lifetime limited warranty
- Textured handle with SoftGrip



Part Number	Description	Overall Length: mm	Closed Length: mm	Weight: grams	Packaging
GE06971	E-Z Out Rescue Knife	202	113	74	Box

River Shorty Knife

There is no watersports knife like the River Shorty, built especially for the unique requirements of rafting, paddling and diving. Medium carbon stainless steel is the core material, polished to limit corrosion.

- Ideal for watersports
- Hard plastic sheath
- Corrosion resistant blade
- Blade Type: Serrated
- Handle Material: Glass-filled Nylon
- Lifetime Limited Warranty
- Sheath Material: Molded Plastic



Part Number	Description	Overall Length: mm	Blade Length: mm	Weight: grams
GE05640	River Shorty Knife	171	77	113

Obsidian Fine Edge Knife

Its a knife first, with multi-functional implements second. The Obsidian clip knife features a high-grade blade with dual thumb studs for one-handed opening and a safety-style lock that ensures the blade stays open or closed when you need it to.

- Safety plunge (piston) lock
- Lanyard hole
- Includes cross point & flat head drivers, file and bottle opener
- Lifetime limited warranty
- Blade material: 440 stainless
- Blade type: drop point
- Handle material: glass-filled nylon



Part Number	Description	Overall Length: mm	Closed Length: mm	Weight: grams
GE41021	Obsidian FE Knife	179	105	82

Ripstop 1 Fine Edge Knife

The Ripstop 1 is a super lightweight frame concept that delivers bold strength and high functionality. The weight of the stainless steel construction knife is made lighter by the handle and blade design.

- Dual thumb stud for easy one-hand opening
- Sturdy pocket clip
- Super lightweight, streamlined design
- Lifetime limited warranty
- Opening style: Clip folding



Part Number	Description	Overall Length: mm	Closed Length: mm	Weight: grams
GE41614	Ripstop 1 FE Knife	146	88	57

Powerframe Fine Edge Knife

This knife's fine-edge blade uses the same stainless steel, frame-lock body design as the Paraframe. Lightweight and easy to open, the entire knife has a smooth titanium coating, making it more corrosion resistant and less reflective. It's a tough and technically sound daily-use folder.

- Compact, lightweight pocket folder
- Lifetime limited warranty
- Lightweight and easy to open
- Full fine edge blade



Part Number	Description	Overall Length: mm	Closed Length: mm	Weight: grams
GE41965	Powerframe FE Knife	178	102	91

Mini-Remix Fine Edge Knife

The Mini is a smaller version of the Remix with the same innovative open frame design. The circular anodized aluminum handle provides stability and grip while cutting. It has a corrosion resistant, drop-point, fine-edge blade that opens with one hand. The Mini-Remix is years of Gerber creativity distilled into one small pocket clip folder.

- Compact pocket folder
- Lifetime limited warranty
- Lightweight and easy to open
- Full fine edge blade



Part Number	Description	Overall Length: mm	Closed Length: mm	Weight: grams
GE1000346	Mini-Remix FE Knife	142	90	62

Remix Fine Edge Knife

The circular anodized aluminum handle is the focus of the Remix's minimal design. As lightweight as it is tough, this folding clip knife has a corrosion resistant fine-edge blade that opens with one hand. The handle's o-ring provides stability and grip while cutting.

- Compact pocket folder
- Lifetime limited warranty
- Lightweight and easy to open
- Full fine edge blade
- Aluminium handle



Part Number	Description	Overall Length: mm	Closed Length: mm	Weight: grams
GE41968	Remix FE Knife	187	113	120

Pocket Knives

Ultralight L.S.T. Fine Edge Pocket Knife

With a smooth mechanical action when you open and close the 400 series stainless steel blade, the Ultralight LST is the ultimate in lightweight performance.

- Lock Mechanism: Lock-back
- Lifetime limited warranty
- Blade Style: Drop Point
- Frame lock: Common lock
- Blade Material: 420HC Stainless Steel
- Handle Material: Glass-filled nylon



Part Number	Description	Overall Length: mm	Closed Length: mm	Weight: grams
GE46050	Ultralight LST FE Pocket Folding Knife	117	67	17

L.S.T. Fine Edge Pocket Knife

With a similar design to the Ultralight the LST has the same smooth mechanical action when you open and close the 67mm long stainless steel blade.

- Lock Mechanism: Lock-back
- Lifetime limited warranty
- Blade Style: Drop Point
- Frame lock: common lock
- Blade Material: 420HC Stainless Steel
- Blade Type: Fine
- Handle Material: Glass-filled nylon



Part Number	Description	Overall Length: mm	Closed Length: mm	Weight: grams
GE46009	LST FE Pocket Folding Knife	155	92	34

STL 2.5 Drop Point Fine Edge Knife

A neat, compact pocket folding knife with styling cues on the handle and very thin body to sit deep in a pocket or purse.

- Compact, lightweight pocket folder
- Lifetime limited warranty
- Fully machined stainless steel handle, creates thinnest handle with style and comfort
- Frame lock: Common lock
- Full fine edge; preferred edge with smaller blade
- Lifetime Limited Warranty



Part Number	Description	Overall Length: mm	Closed Length: mm	Weight: grams
GE31000716	STL 2.5 Pocket Folding Knife	152	86	43

Paraframe Mini Folding Knives

The smallest of the knives in the Paraframe series, the Mini is based on the same frame-lock design. It's a beautifully simple open frame knife, available with a serrated or fine edge locking blade that is lightweight, easy to clean and opens effortlessly.

Built with a smooth stainless steel handle and a clip for secure travel.

- Lock Mechanism: Frame-lock
- Blade Style: Clip Point
- Blade Material: High Carbon Stainless
- Blade Type: Serrated or fine edge
- Handle Material: Stainless Steel
- Opening Style: One-handed opening
- Lifetime Limited Warranty



Serrated



Fine Edge

Part Number	Description	Overall Length: mm	Closed Length: mm	Weight: grams
GE48484	Paraframe Mini - Serrated Blade	152	78	40
GE48485	Paraframe Mini - Fine Edge Blade	152	78	40

Paraframe I Folding Knives

Like all knives in the Paraframe series, the Paraframe I is based on the same minimal frame-lock design.

- Lock Mechanism: Frame-lock
- Blade Style: Clip Point
- Blade Material: High Carbon Stainless
- Blade Type: Serrated or fine edge
- Handle Material: Stainless Steel
- Opening Style: One-handed opening
- Lifetime Limited Warranty



Serrated



Fine Edge

Part Number	Description	Overall Length: mm	Closed Length: mm	Weight: grams
GE48443	Paraframe I - Serrated Blade	178	104	74
GE48444	Paraframe I - Fine Edge Blade	178	104	74

Paraframe II Folding Knives

The largest of the knives in the Paraframe series, the Paraframe II is based on the same minimal frame-lock design. It's a beautifully simple, open frame knife, available with a serrated or fine edge locking blade that is lightweight, easy to clean and opens effortlessly. Built with a smooth stainless steel handle and a clip for secure travel.

- Lifetime limited warranty
- Lock Mechanism: Frame-lock
- Blade Style: Clip Point
- Blade Material: High Carbon Stainless
- Blade Type: Serrated or fine edge
- Handle Material: Stainless Steel
- Opening Style: One-handed opening
- Lifetime Limited Warranty



Serrated



Fine Edge

Part Number	Description	Overall Length: mm	Closed Length: mm	Weight: grams
GE48447	Paraframe II - Serrated Blade	210	122	119
GE48448	Paraframe II - Fine Edge Blade	210	122	119

Gerber Edge Industrial Knife

Getting the job done has never been easier or safer than with the spring lock and secure grip TacHide™ handle.

- Durable black rubber handle
- Replaceable Utility Blade - Uses contractor or standard grade
- Spring Lock - For easy press and release blade replacement
- Anodized Aluminum Handle - Lightweight and strong
- Pocket Clip - Easy carry
- Lifetime Limited Warranty



Part Number	Description	Overall Length: mm	Closed Length: mm	Weight: grams	Packaging
GE31000668	Ripstop 1 FE Knife	155	97	82	

Multi-Tools - Full

Diesel Multi-Plier

The individual stainless steel tools are bigger than average, and more rugged than normal. And each one locks into place for maximum safety and security.

Includes: Needlenose pliers, 1/2 fine edge & serrated blade, saw, Phillips driver, small flat driver, lanyard ring, bottle opener, can opener, scissors, file, wire cutters, ballistic nylon sheath.

- Handle Material: Stainless Steel
- Sheath Material: Ballistic Nylon
- Pliers Type: Needlenose
- Handle Colour: Bead Blast
- Lifetime Limited Warranty



Part Number	Description	Overall Length: mm	Closed Length: mm	Weight: grams	Packaging
GE41470	Diesel Multi-Plier	168	125	244	Clam

Flik Multi-Plier

Flik is a revolutionary new multi-tool that delivers industrial strength and professional grade functionality within a compact design meant for every day use.

Includes: Needlenose pliers, 1/2 fine edge & serrated blade, saw, Phillips driver, small flat driver, medium driver, lanyard ring, bottle opener, can opener, scissors, V cut wire cutters, ballistic nylon sheath.

- Handle Material: Stainless Steel
- Sheath Material: Ballistic Nylon
- Pliers Type: Sliding Jaw
- Lifetime Limited Warranty



Part Number	Description	Overall Length: mm	Closed Length: mm	Weight: grams	Packaging
GE41054	Flik Multi-Plier	147	112	248	Clam

Grappler Multi-Plier

This vise-grip snaps into ready position with just one-hand and locks down for a tight bite on any screw 5/8" or smaller. With 12 total components including a sturdy-sized knife blade, the Grappler is sure to be a Gerber classic.

Includes: Needlenose pliers, 1/2 fine edge & serrated blade, Phillips driver, large flat driver, ruler, bottle opener, pry bar, V cut wire cutters, wire stripper, nail puller, ballistic nylon sheath.

- Opening Style: One handed
- Sheath Material: Ballistic Nylon
- Lifetime Limited Warranty



Part Number	Description	Overall Length: mm	Closed Length: mm	Weight: grams	Packaging
GE31000333	Grappler Multi-Plier	152	127	298	Clam

Legend Multi-Plier

The Legend is the ultimate stop in the Gerber line of innovative multi-function tools. This versatile tool features all stainless steel hardware and spring-loaded pliers for ease of use.

Includes: Needlenose pliers, 1/2 fine edge & serrated blade, Remgrit Saw™, Phillips driver, small flat driver, medium flat driver, large flat driver, bottle opener, file, scissors, tungsten carbide cutters, ballistic nylon sheath.

- Stainless steel
- Sheath Material: Ballistic Nylon
- Lifetime Limited Warranty



Part Number	Description	Overall Length:mm	Closed Length:mm	Weight: grams	Packaging
GE08239	Legend Multi-Plier	167	109	278	Box

MP 400 Compact Sport

Slightly smaller than our Multi-Plier® 600, the Compact Sport is Gerber's most popular multitool. Built with stainless steel hardware, including Fiskars scissors and one-handed opening pliers, the 400 is durable and easy to use. Every tool locks securely into place using Gerber's Saf.T.Plus™ system and it comes with a nylon sheath for secure carry. This is a do-it-all Gerber multi-plier designed for a lifetime of use.

Includes: Needlenose pliers, 1/2 fine edge & serrated blade, Phillips driver, small flat driver, medium flat driver, large flat driver, bottle opener, can opener, scissors, wire cutters, wire stripper, ballistic nylon sheath.

- Handle Material: Stainless Steel
- Sheath Material: Ballistic nylon
- Pliers Type: Needlenose
- Lifetime Limited Warranty
- Handle Colour: Bead Blast



Part Number	Description	Overall Length:mm	Closed Length:mm	Weight: grams	Packaging
GE05500	MP 400 Compact Sport	143	111	193	Box

MP 600 Basic Multi-Plier

A high-performing, versatile tool made from stainless steel and with Gerber's patented replaceable tungsten carbide wire cutters. When the cutters become dull or misshapen simply rotate the tungsten carbide cutters 120-degrees, for a good-as-new wire cutter. After three rotations, the entire cutter can be replaced.

Includes: Needlenose / Bluntnose pliers, Tungsten carbide wire cutter, wire crimper, fine edge knife, serrated knife, cross point screwdriver, small, medium and large flat blade screwdrivers, lanyard ring, can opener & bottle opener, file, ballistic nylon sheath.

- Handle Material: Stainless Steel
- Sheath Material: Ballistic nylon
- Pliers Type: Needlenose or Bluntnose
- Handle Colour: Stainless Steel
- Lifetime Limited Warranty



Part Number	Description	Overall Length:mm	Closed Length:mm	Weight: grams	Packaging
GE47530	MP 600 Basic Needlenose	168	128	257	Clam
GE07500	MP 600 Basic Bluntnose	168	128	257	Box

MP 600 Pro Scout Multi-Plier

The Pro-Scout is the most deluxe version of Gerber's Multi-Plier 600 line, with Fiskars scissors and the patented universal saw coupler with the premium RemGrit™ blade. The Pro-Scout is engineered from premium stainless steel. And sports Gerber's popular one-hand opening pliers and the Saf.T.Plus™ locking system.

Includes: Needlenose pliers, wire cutter, wire crimper, serrated knife, RemGrit saw with universal saw coupler, Fiskars scissors, cross point screwdriver, small and medium flat blade screwdrivers, can opener, bottle opener, file, ruler and tool kit with ten bits.

- Handle Material: Stainless Steel
- Sheath Material: Ballistic nylon
- Pliers Type: Needlenose
- Includes ten piece toolkit
- Handle Colour: Bead Blast
- Lifetime Limited Warranty
- One-handed opening



Part Number	Description	Overall Length:mm	Closed Length:mm	Weight: grams	Packaging
GE07564	MP 600 Pro Scout	168	128	256	Box

Strata Multi-Plier

Slim, sleek and packed with functionality, the Strata delivers spring loaded pliers, hungry carbide cutters and 13-outboard components including a clam package opening tool for those pesky plastic packages. SAFT.PLUS Locking system keep components in the open and closed positions when you want them to be.

Includes: Needlenose pliers, carbide pinch cutters, saw, 1/2 fine edge & serrated blade, can & bottle opener, scissors, large flathead driver, retail package opener & small driver, large cross driver, small tipped file.

- Opening Style: Butterfly
- Sheath Type: Nylon
- Components: 13 Stainless Steel
- Brushed Finish
- Lifetime Limited Warranty



Part Number	Description	Overall Length:mm	Closed Length:mm	Weight:grams	Packaging
GE3100334	Strata Multi-Plier	152	102	210	Clam

Suspension Multi-Plier

Inspired by the bridges of Gerber's hometown in Portland, Oregon, the Suspension is an open frame multitool with spring-loaded pliers, Saf.T.Plus™ locking system, a fine-edge knife, serrated knife, rough cut saw and more. Housed in a ballistic nylon sheath, it is lightweight yet durable.

Includes: Needlenose pliers, wire cutter, fine edge knife, serrated edge knife, saw, scissors, crosspoint screwdriver, small and medium flatblade screwdrivers, can opener, bottle opener, lanyard hole.

- Handle Material: Stainless Steel
- Sheath Material: Ballistic nylon
- Pliers Type: Needlenose
- Handle Colour: Titanium grey
- Lifetime Limited Warranty



Part Number	Description	Overall Length:mm	Closed Length:mm	Weight:grams	Packaging
GE01471	Suspension Multi-Plier	165	102	273	Box
GE41471	Suspension Multi-Plier	165	102	273	Clam

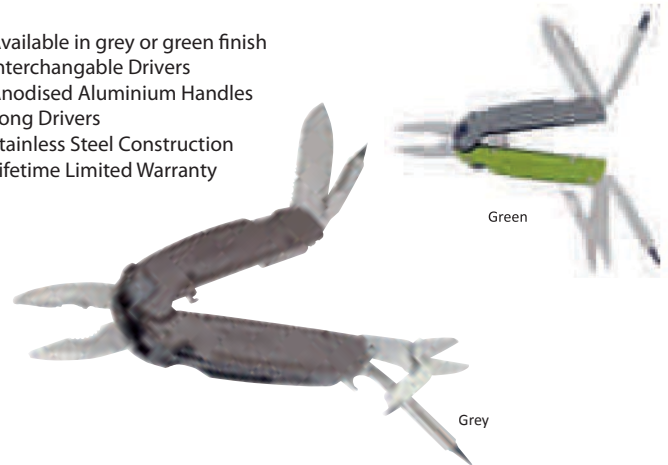
Compact Tools

Balance Jaw Multi-Tool

Smooth edges and compact size define the Balance Jaw Multi-Tool. While it may be sleek, it packs 12 components including easy sliding pliers and long drivers for electronics.

Includes: Needlenose pliers (sliding jaw), regular pliers, pinch V cut wire cutters, Scissors, 1/2 fine edge & serrated knife, interchangeable small cross & flat screwdrivers, interchangeable medium cross & flat screwdrivers, bottle opener, tweezers.

- Available in grey or green finish
- Interchangeable Drivers
- Anodised Aluminium Handles
- Long Drivers
- Stainless Steel Construction
- Lifetime Limited Warranty



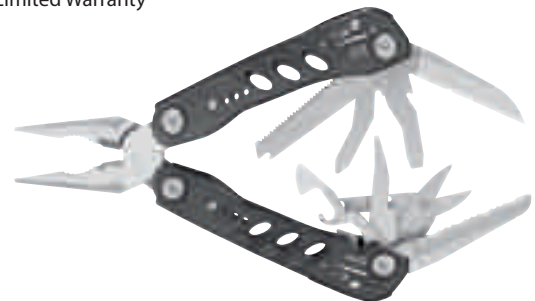
Part Number	Description	Colour	Overall Length:mm	Closed Length:mm	Weight:grams	Packaging
GE31001250	Balance Jaw Multi-Tool	Grey	135	97	199	Clam
GE30000506	Balance Jaw Multi-Tool	Green	135	97	199	Box

Evo Multi-Tool

Time and again, Gerber manages to push the bar for innovation in the multi-tool category. The new Evo is no exception. Based on their knife counterparts, they exude style and feature all outboard components, meaning there is no need to open handles to access tools. Each component is locking, making these tools among the safest out there. Spring loaded handles reduce user fatigue during extended use.

Includes: Needlenose pliers, pincher style wire cutters, saw blade, cross driver, fine edge blade, scissors (small and flat), bottle opener, can opener, serrated knife, lanyard.

- Titanium nitride coated 440 stainless steel blade
- Anodised aluminum handle
- Thumb stud for easy one-hand opening
- Lifetime Limited Warranty



Part Number	Description	Overall Length:mm	Closed Length:mm	Weight:grams	Packaging
GE41771	Evo Multi-Tool	152	101	291	Clam

Crucial Multi-Tool

It's compact and folds up small, yet the Crucial collects an entire toolbox of full-sized components in one rugged stainless steel package. The pliers handles are ergonomically curved for a better grip and more torque. The liner-locking knife blade is half fine edge and half serrated. It has a carabiner clip that folds out for easy attachment to a backpack, vest or belt loop. Built with a clip and weighing just five ounces, the Crucial can also be carried as an everyday pocket tool.

Includes: Needlenose pliers, 1/2 fine edge & serrated blade, Phillips driver, large flat driver, bottle opener, V cut wire cutters, caribeener clip, pocket clip, regular pliers.

- Stainless steel
- Convenient clip

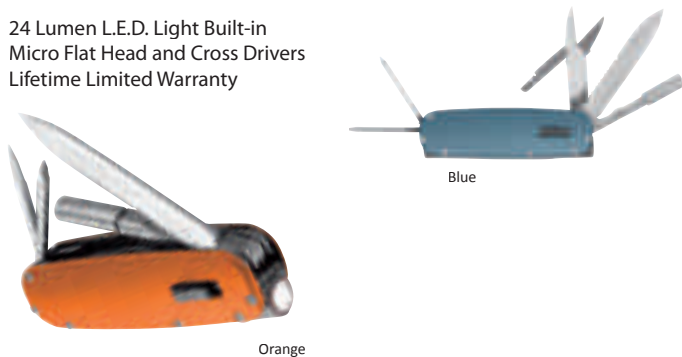


Part Number	Description	Overall Length:mm	Closed Length:mm	Weight: grams	Packaging	Colour
GE31001337	Crucial Compact Multi-Tool	138	91	142	Clam	Grey
GE31001339	Crucial Compact Multi-Tool	138	91	142	Clam	Green
GE30000016	Crucial Compact Multi-Tool	138	91	142	Box	Grey
GE30000140	Crucial Compact Multi-Tool	138	91	142	Box	Green

Fit Light Multi-Tool

Encased in smooth anodised aluminum, the Fit is a handheld 20 Lumen L.E.D. flashlight with folding multitool attachments. Outfitted with long drivers to reach into small spaces that other multitools can't, it includes a locking fine edge and serrated blade, bottle opener, scissors, tweezers and multiple drivers. It's a compact, standalone flashlight with dozens of other daily uses.

- 24 Lumen L.E.D. Light Built-in
- Micro Flat Head and Cross Drivers
- Lifetime Limited Warranty

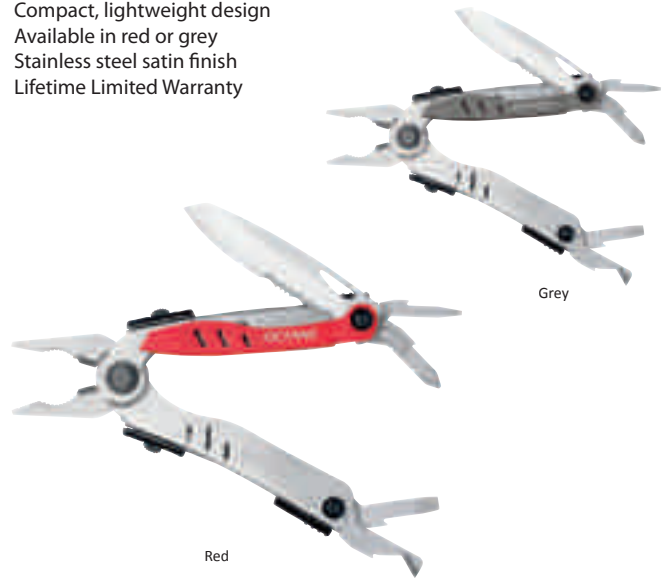


Part Number	Description	Overall Length:mm	Closed Length:mm	Weight: grams	Packaging	Colour
GE31000919	Fit Light Multi-Tool	216	102	145	Clam	Orange
GE30000376	Fit Light Multi-Tool	216	102	145	Box	Orange
GE31000731	Fit Light Multi-Tool	216	102	145	Clam	Blue

Octane Multi-Pliers

Gerber's patented one-hand opening design makes the Octane a quick starter, while the sleek form and function ensure it's a top performer. It's light enough to carry in your pocket, and combines 9 useful tools.

- Compact, lightweight design
- Available in red or grey
- Stainless steel satin finish
- Lifetime Limited Warranty



Part Number	Description	Overall Length:mm	Closed Length:mm	Weight: grams	Packaging	Colour
GE31000441	Octane Multi-Plier	138	102	142	Clam	Red
GE30000373	Octane Multi-Plier	138	102	142	Clam	Grey

Dime Keychain Multi-Tool

Gerber took the standard Keychain Multi-Tool and made it better! In addition to stainless steel pliers, wire cutters, a fine edge blade, spring-loaded scissors, flathead screwdriver, phillips screwdriver, tweezers and file, the new Gerber Dime includes a unique blade designed to safely cut score plastic packaging and a bottle opener that is exposed even when the tool is closed.

- Compact, lightweight design
- Stainless Steel
- Lifetime Limited Warranty



Part Number	Description	Overall Length:mm	Closed Length:mm	Weight: grams	Packaging	Colour
GE31001040	Dime Keychain Multi-Tool	102	70	78	Clam	Red
GE31001132	Dime Keychain Multi-Tool	102	70	78	Clam	Green

Steady Multi-Tool Tripod

Built for the weekend adventurer, the Gerber Steady combines the utility of a multi-tool and the functionality of a camera tripod.

Includes: Camera / mobile phone mount, mobile phone attachment, fine edge blade, serrated blade, three screwdrivers, bottle opener, pliers, wire cutters.

- Compact, lightweight design
- Stainless Steel Components
- Lifetime Limited Warranty



Part Number	Description	Overall Length:mm	Closed Length:mm	Weight:grams	Packaging
GE31001043	Steady Multi-Tool Tripod	203	101	164	Clam

Knife Accessories

Ceramic Pocket Sharpener

The blades in Gerber knives and multi-tools are engineered from high quality stainless steel that excels at edge retention. Still there comes a time when proper sharpening is called for. For those occasions, Gerber has developed the ceramic pocket sharpener.

- Fine ceramic rods for razor sharpness
- Coarse ceramic rods for aggressive sharpening
- Lifetime Limited Warranty



Part Number	Description	Overall Length: mm	Weight: grams
GE04307	Ceramic Pocket Sharpener	52	17

Diamond Knife Sharpener

The blades in Gerber knives and multi-tools are engineered from high quality stainless steel that excels at edge retention. Still there comes a time when proper sharpening is called for. For those occasions, Gerber has developed the diamond knife sharpener.

- Triple diamond plated design
- Sharpens serrated and fine edge blades
- Fish hook sharpener
- Lifetime Limited Warranty



Part Number	Description	Overall Length:mm	Closed Length:mm	Weight:grams	Packaging
GE09841	Diamond Knife Sharpener	188	136	45	Clam

Multi-Tool Accessories

Carbide Cutter Insert Replacements

Selected models of the Gerber tool line feature an extremely rugged tungsten carbide cutting insert. Once dull, the insert can be rotated 120 degrees for a fresh start. After all three sides have been dulled the insert can be replaced.

Replacements fit the following Multi-Pliers: Basic (select models only), Pro-Scout (select models only), and Legend.

- Two tungsten carbide cutter replacements for Multi-Pliers Hex head wrench
- Four replacement screws
- Lifetime Limited Warranty



Part Number	Description	Packaging
GE48252	Carbide Cutter Insert Replacements	Clam



10 Piece Tool Kit for Flik, Grappler, Diesel, Evo & Suspension

Add to the functionality of your Multi-Plier by using this add-on tool kit. Contains an adapter, three different sizes of flat head bits, cross point bits, and hex head bits, respectively.

- Stainless steel construction
- Adapts to most multi-pliers
- Lifetime Limited Warranty



Part Number	Description	Packaging
GE49445	10 Piece Tool Kit	Clam

10 Piece Tool Kit for MP400, MP600, MP650, MP700 & MP800 Legend

Add to the functionality of your Multi-Plier by using this add-on tool kit. Contains an adapter, three different sizes of flat head bits, cross point bits, and hex head bits, respectively.

- Stainless steel construction
- Adapts to most multi-pliers
- Lifetime Limited Warranty



Part Number	Description	Packaging
GE45200	10 Piece Tool Kit MP Series	Clam

Torches

Recon 'Dial' LED Torch

The Recon LED lets you choose from 4 different colours of light. White for general situations, red for preserving night vision, blue for identifying fluids and green for map reading.

- Anodized aircraft aluminum body
- Lifetime Limited Warranty
- Low watt LED with proprietary DIAL technology
- Output colour: White, red, blue, green
- Clip allows for hands free use



Part Number	Description	Battery Type	Length:mm	Weight:grams
GE80016	Recon 'Dial' LED Torch	1 x AA	84	74

TX4.0 LED Torch

A sturdy flashlight with anti-roll design, the TX4 features an ultra-narrow optic for improved beam distance visibility. Also includes a rear tail-cap switch for signaling (momentary) or full click (on/off). Regulating circuitry for improved battery efficiency. IPX4 (Weatherproof), CE & RoHS certified.

- High 75 lumen output
- Water resistant
- Output colour: White
- Lifetime Limited Warranty
- Anodised aircraft aluminium body



Part Number	Description	Battery Type	Length:mm	Weight:grams
GE31000336	TX4.0 LED Torch	3 x AA	200	284





Introducing the Bear Grylls Survival Series of gear. This collaboration brings together Gerber's over 70 years of knife and gear expertise with Bear Gryll's extensive outdoor survival and adventure experience to create a one-of-a-kind line of knives, tools and gear. From his time in the British SAS, to scaling Mount Everest, to hosting his survival television show all over the globe, Bear knows what it takes to be a survivor in extreme situations. Each item in the Survival Series is meticulously designed by Gerber and Bear to offer a multitude of uses in any environment.

Bear Grylls Compact Scout Folding Pocket Knife

The Compact Scout is lightweight and compact. It draws on Bear's experience as Chief UK Scout and figurehead to 28 million Scouts worldwide. Just the thing to keep tucked away in a pocket. You never know when you might need it.

- Thin and lightweight folding knife
- 1/2 serrated high carbon stainless steel drop point blade - Ideal for edge retention and cutting rope
- Nail nick in blade for easy opening
- Lock back - Locks blade securely in place and maximises safety during closing
- Oversized finger notch in handle to minimise slipping
- Lifetime Limited Warranty
- Priorities of Survival - Pocket Guide contains Bear's survival essentials



Part Number	Description	Overall Length: mm	Closed Length: mm	Weight: grams
GE31000760	BG Compact Scout Folding Knife	147	84	25

Bear Grylls Pocket Tool

An updated classic, the Pocket Tool is a modern interpretation of the traditional, minimal multitool. The basic components - large fine-edge blade, bottle opener, Phillips head driver, small and medium flat driver - are housed within a tough rubberised handle, perfect for gripping in the elements, with or without gloves on.

- Tough, rubberised handle to maximise comfort and minimise slippage
- 5 Components
- Lifetime Limited Warranty
- Priorities of Survival - Pocket Guide contains Bear's survival essentials



Part Number	Description	Overall Length: mm	Closed Length: mm	Weight: grams
GE31001050	BG Pocket Tool	140	81	82

Bear Grylls Compact Multi-Tool

The only compact multi-tool with two full size blades on it. The Compact Multi-tool is small enough for a keychain or pocket, yet packs a big punch when you need it most.

Includes 10 components: Needle Nose Pliers, Wire Cutters, Fine Edge Knife, Serrated Knife, Phillips Screwdriver, Small Flat Driver, Medium Flat Driver, Lanyard Ring, Bottle Opener, Tweezers.

- Compact and Lightweight - Fits on keychain or in pocket
- External components and nail nicks for easy access
- Lifetime Limited Warranty
- Priorities of Survival - Pocket guide contains Bear's survival essentials



Part Number	Description	Overall Length: mm	Closed Length: mm	Weight: grams
GE31000750	BG Compact Multi-Tool	109	64	98

Bear Grylls Ultimate Multi-Tool

Rugged construction, spring loaded pliers, external locking tools and an extra grippy handle earn this tool its moniker: the Ultimate Multi-tool.

Includes: Needle Nose Pliers, Fine Edge Knife, Serrated Knife, Saw, Phillips Screwdriver, Small Flat Driver, Medium Flat Driver, Lanyard Ring, Bottle Opener, Can Opener, Scissors, Wire Cutters.

- Ergonomic textured rubber grip - Maximizes comfort and reduces slippage
- Spring loaded jaw for simplified single-hand use
- External components for easy access
- Patented Safe.T.Plus System
- Lifetime Limited Warranty
- Nylon Sheath - Lightweight, military-grade, mildew resistant
- Includes Land to air rescue instructions
- Priorities of Survival - Pocket guide contains Bear's survival essentials



Part Number	Description	Overall Length: mm	Closed Length: mm	Weight: grams
GE31000749	BG Ultimate Multi-Tool	160	102	270

Bear Grylls Survival Series

Bear Grylls Field Knife Sharpener

Encased in a smooth, hard plastic cover the Bear Grylls Field Knife Sharpener fits easily in your pocket. The handle is made of grippy rubber for secure holding in wet or cold conditions. Two rod shaped diamond-coated sharpeners allow you to sharpen the serrated sections of your knife. Coarse Carbide and Fine Ceramic inserts will get your fine edge blade in shape. Your Survival Series Field Sharpener will likely be the only one you'll ever need.

- Hard plastic cover
- Pocket size
- Grippy handle
- Sharpens fine edge & serrated blades
- Lifetime Limited Warranty
- Priorities of Survival - Pocket Guide contains Bear's survival essentials



Part Number	Description	Overall Length: mm	Weight: grams
GE31001270	BG Field Sharpener	114	65

Survival Kits

Bear Grylls Basic Survival Kit

Lifesaving in an emergency. The Basic Kit's mantra is: Stay prepared. Stay alive.

8 Piece Kit: Waterproof Bag, Gerber® Mini-Paraframe™ Knife, Emergency Whistle, Fire Starter, Waterproof Matches, Snare Wire, Emergency Cord, Cotton Ball - Fire Tinder.

- Lightweight, ripstop nylon bag with waterproof zipper
- Land to air rescue instructions
- Lifetime Limited Warranty
- Priorities of Survival - Pocket guide contains Bear's survival essentials



Part Number	Description	Sheath Dims: mm	Weight: grams
GE31000700	BG Basic Survival Kit	114 x 127	119

Bear Grylls Scout Essentials Kit

There are a few non-negotiable items that every outdoor adventurer must have, and this is one of them. The Scout Essentials Kit has been designed by Bear Grylls and Gerber for absolute safety and survival in the wild. Every detail has been carefully considered; even the polypropylene case doubles as a water capturing device.

Complete with a first aid kit, waterproof matches, L.E.D. Micro Torch light, Compact Scout knife, button compass and Bear's Priorities of Survival Guide, this is the cornerstone of packing for any trip through the backcountry. Includes Lifetime Limited Warranty.



Part Number	Description	Sheath Dims: mm	Weight: grams
GE31001078	BG Scout Essentials Kit	120 x 95	153

Bear Grylls Ultimate Survival Kit

A survival kit built for hostile environments. Stick the Ultimate Kit in your backpack and hope you never have to use it. If you do, it has everything you need to survive in even the toughest spots.

16 piece kit with Gerber Miniature Multi-Tool, Waterproof Bag, Miniature Light, Hand Saw, Signalling Mirror, Survival Blanket, Fire Starter, Waterproof Matches, Cotton Ball - Fire Tinder, Snare Wire, Emergency Cord, Waxed Thread, Fishing Kit, Sewing kit, Lanyard Whistle.

- Lightweight, ripstop nylon bag with waterproof zipper
- Land to air rescue and SOS instructions
- Lifetime Limited Warranty
- Priorities of Survival - Pocket guide contains Bear's survival essentials



Part Number	Description	Sheath Dims: mm	Weight: grams
GE3100701	BG Ultimate Survival Kit	114 x 173	267

Bear Grylls Hands Free Torch

When solving at sea or in the wild, you need three things - your head, your hands and your tools. The Bear Grylls Hands Free Torch frees up your hands to work in concert with your head and your tools. The elastic headband offers storage for an additional battery and the adjustable lamp has three settings - bright, low and off.

- Hands Free
- Headband stows spare battery
- Adjustable lamp
- Lumens: Low 8, high 30
- Runtime: Low 15 hours, high 8.75 hours
- Lifetime Limited Warranty
- Includes land to air rescue instructions
- Priorities of Survival - Pocket guide contains Bear's survival essentials



Part Number	Description	Battery Type	Length:mm	Weight:grams
GE31001028	BG Hands Free Torch	1 x AAA	62	113

Bear Grylls Micro Torch

Every survival tool, no matter its size, is important. The Micro Torch is a compact L.E.D. light that can attach to any zipper on your jacket, backpack or fleece. It's built with a long-lasting L.E.D. bulb with four settings - Low, high, beacon/blinking and off. The soft rubber switch makes it easy to use in any condition, even when wearing gloves.

- Compact
- Long-lasting L.E.D. bulb
- 4 Settings
- Easy to use soft rubber switch
- Lifetime Limited Warranty
- Lumens: Low 3, high 6, beacon/blinking 8
- Runtime: Low 8 hours, high 3.5 hours, beacon/blinking 5 hours
- Priorities of Survival - Pocket guide contains Bear's survival essentials



Part Number	Description	Battery Type	Length:mm	Weight:grams
GE31001034	BG Micro Torch	2 x CR61616	45	108

Bear Grylls Survival Torch

Encased in a water resistant rubber handle, the Bear Grylls Survival Torch is compact and powerful. Made for any type of outdoor excursion, it's a rugged flashlight designed with a safety net. In addition to 20 hours of burn time, the interior capsule provides ample storage for the included waterproof matches and tinder. More than just a light, the Survival Torch is a lifeline.

- Compact
- Water resistant
- Stores matches and tinder
- Lifetime Limited Warranty
- Lumens: High 15
- Runtime: 36 hours
- Priorities of Survival - Pocket guide contains Bear's survival essentials



Part Number	Description	Battery Type	Length:mm	Weight:grams
GE31001031	BG Survival Torch	1 x AA	152	110



A good oar combines demanding technical properties and a pleasant feel. A good oar is balanced and of the right length. The blade must be light and the handle slightly heavier. The blade of a good oar moves beautifully in the water: it does not splash, bounce or create too much swirl.

That is what a LAHNA oar is like. Made of wood. And exactly for that reason it is live, warm, flexible and light. Lahna's extensive range provides the best oar for every boat.

Oar Selection

Oar size is an important consideration when purchasing oars. You need to take several factors into consideration when choosing your oar size, including the size, weight and maneuverability of the boat. Oars that are too long or short will have a negative impact on your ability to control the boat in the water.

Beam: cm	Length of Oar: cm
100	150 - 180
110	180 - 210
120	195 - 225
130	225 - 255
140	240 - 270
150	255 - 300
160	285 - 315
170	300 - 330
180	330 - 360

SeaGrade Oar with Collar

A very high-class oar laminated from clean timber for demanding conditions. Beautifully-shaped handle and blade reinforced with a wedge.

Finished with waterproof varnish and a reinforced plastic collar to protect the oar from wear and tear.



Part No.	Description	Length: m
LA3151	SeaGrade Oar with Collar	1.50
LA2181	SeaGrade Oar with Collar	1.80
LA3211	SeaGrade Oar with Collar	2.10
LA3221	SeaGrade Oar with Collar	2.25
LA3241	SeaGrade Oar with Collar	2.40
LA3271	SeaGrade Oar with Collar	2.70
LA3301	SeaGrade Oar with Collar	3.00

SeaGrade Oar Plus - Jointed

Similar to the SeaGrade Oar with Collar but with a joint. The oar can easily be divided into two parts making it a practical oar for inflatable dinghies and where storage space is limited.



Part No.	Description	Length: m
LA4150	Seagrade Oar with Collar	1.50
LA4165	Seagrade Oar with Collar	1.65
LA4180	Seagrade Oar with Collar	1.80

SeaSide Oar with Optional Collar

A wooden sea oar laminated from selected, somewhat knotty timber. Shaped handle and blade reinforced with a wedge. Finished with waterproof varnish.

A reinforced plastic collar can be added to the SeaSide oar to protect against wear and tear.



Part No.	Description	Length: m
LA7150	SeaSide Oar	1.50
LA7180	SeaSide Oar	1.80
LA7210	SeaSide Oar	2.10
LA7240	SeaSide Oar	2.25
LA7270	SeaSide Oar	2.40
LA7300	SeaSide Oar	2.70
LA44044	Plastic Collar for SeaSide Oar	-



LAHNA Canoe and Kayak Paddles

LAHNA Canoe paddles integrate excellent characteristics with a beautiful and well-finished design. LAHNA paddles are comfortable to use, with light, warm wood that is flexible and conforms to its user.

The paddle with a plastic blade is light and durable. It is a reliable allround paddle suited for both beginners and more experienced canoeists.

Indie Tour Paddle

A paddle laminated from clean timber. Shaped handle, blade tip reinforced with a wedge. Suitable both for canoes and boats.



Part No.	Description	Length: m
LA11100	Indie Tour Paddle	1.00
LA11125	Indie Tour Paddle	1.25
LA11140	Indie Tour Paddle	1.40
LA11150	Indie Tour Paddle	1.50

Camping Kayak Paddle

A paddle laminated from clean timber. Shaped handle, blade tip reinforced with a wedge. Suitable both for canoes and boats.



Part No.	Description	Length: m
LA17210	Camping Kayak Paddle	2.10
LA17220	Camping Kayak Paddle	2.20
LA17225	Camping Kayak Paddle	2.25
LA17240	Camping Kayak Paddle	2.40



LAHNA Flagstuffs

A beautiful flagpole gives the boat a finished appearance. LAHNA offers a selection of flagstaff in mahogany and pine.

Mahogany Flagstuffs

A beautiful flagpole in mahogany. Equipped with a mahogany truck, a cleat and a built-in roller in the truck. Finished with a special varnish to protect against the elements.



Part No.	Description	Diameter: mm	Length: cm
LA22050	Mahogany Flagstaff	25	50
LA22075	Mahogany Flagstaff	25	75
LA22100	Mahogany Flagstaff	25	100
LA22125	Mahogany Flagstaff	25	125

Pine Flagstuffs

A boat flagpole in pine. Equipped with a mahogany truck and plastic cleat. Built-in roller in the truck. Finished with special varnish to protect against the elements.



Part No.	Description	Diameter: mm	Length: cm
LA23075	Pine Flagstaff	25	75
LA23100	Pine Flagstaff	25	100
LA23125	Pine Flagstaff	25	125



Boat Covers

The new range of Boat Covers from Trem are made from extra strong polyester 300 Denier*, Alu coated and equipped with a D-ring for easy fitting.

*Size XXL is made from polyester 600 Denier.



Part No.	Cover Size	For Boat Length: cm	Max Boat Width: cm	D Ring No.	Colour
Q037840	XXS	427-488	180	8	Silver Grey
Q037841	XS	427-488	229	10	Silver Grey
Q037842	S	488-564	239	10	Silver Grey
Q037843	M	518-579	244	10	Silver Grey
Q037844	L	550-610	265	10	Silver Grey
Q037845	XL	580-650	295	10	Silver Grey
Q037846	XXL	630-710	380	10	Navy Blue

Console Covers

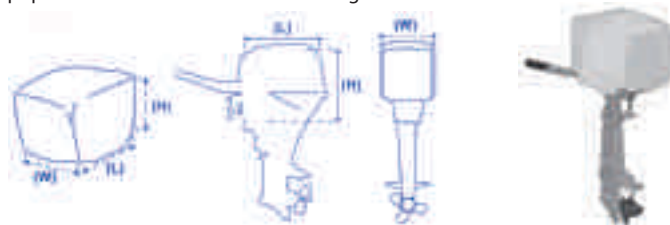
Trem's new console covers are made from extra strong polyester, Alu coated and UV resistant. Available in 4 popular sizes.



Part No.	Cover Size	A: cm	B: cm	C: cm	D: cm
Q037847	XS	115	90	45	55
Q037848	S	90	65	75	85
Q037849	M	120	105	70	65
Q037850	L	140	100	90	70

Engine Covers

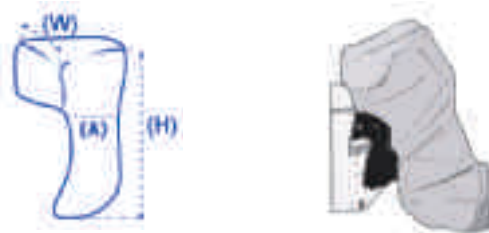
Made from extra strong polyester, Alu coated and UV resistant, these engine covers from Trem will protect your outboard from the elements. Available in 4 popular sizes to suit most outboard engines.



Part No.	Cover Size	HP	L: cm	W: cm	H: cm
Q037854	XXS	2 - 5	40	25	32
Q037855	XS	2 - 15	48	27	35
Q037856	S	10 - 45	55	33	45
Q037857	M	30 - 90	63	35	50

Full Engine Covers

Made from extra strong polyester, Alu coated and UV resistant, these full engine covers from Trem will protect your outboard from the elements. Available in 3 popular sizes to suit most outboard engines.



Part No.	Cover Size	HP	A: cm	H: cm	W: cm
Q037851	S	2.5 - 10	25	75	-
Q037852	M	8 - 70	87	157	-
Q037853	L	70 - 150	125	210	-

Telescopic Gas Springs

Stainless steel telescopic gas springs with eye fastenings and 8mm shaft diameter.



Part No.	Length Open: mm	Length Closed: mm	Ø Cylinder: mm	Ø Eye: mm	Capacity: dAN
Q037860	355	225	18	8	300
Q037864	380	230	15	6	50
Q037859	550	320	18	8	380
Q037858	500	320	18	8	380
Q037861	600	350	18	8	300
Q037862	600	350	18	8	600
Q037863	700	400	22	8	440

Sun Blind - Retractable

A new range of easy to mount, retractable sun blinds from Trem. Made from stainless steel and painted with long lasting epoxy powder for an excellent finish.



Open

Closed

Part No.	Length: mm	Width: mm	Hatch Dims: L x W mm
Q037867	360	400	330 x 330
Q037866	450	500	410 x 410
Q037865	500	600	460 x 500

Sun Blind and Flyscreen

Made from stainless steel and painted with long lasting epoxy powder for an excellent finish. Integral flyscreen.

Q037870 is suitable for use with our own size 60 Storm Hatch.



Flyscreen

Sun blind

Part No.	Sun Blind Length: mm	Sun Blind Width: mm
Q037868	421	421
Q037869	470	470
Q037870	514	514

Binoculars

With 10 x magnification and 50mm objective diameter, these durable binoculars will go the distance. Supplied with carry case and a handy strap.



Part No.	Description
Q037838	Black Binoculars with Strap and Carry Case

Folding Pilot Seat

Folding pilot seat made from white marine grade imitation leather. Supplied with screws for assembling the pedestal.



Open



Closed

Part No.	Dimensions: W x D x H mm
Q037839	41 x 36 x 48

Gangways

A selection of folding and rigid gangways from Trem, made from high quality wood and marine grade stainless steel fittings. All gangways have wheels and a 25mm diameter turning pivot.



Q037872 / 73



CQ037871

Part No.	Description	Length: cm	Width: cm	Capacity: kg
Q037871	3 Folding Gangway	220	30	160
Q037872	Rigid Gangway	200	30	160
Q037873	Rigid Gangway	230	30	160



Seating Systems

Attwood is the marine industry's premier source of seating systems. Every seat is engineered to enhance both the look of the boat and the comfort of the boater. Attwood introduces award-winning seating innovations year after year.

Venture - Folding Seat

The Venture folding seat is designed to satisfy the widest possible range of boaters and boat builders.

The Venture mounts in any location on bass boats, aluminum fishing boats, fish'n ski, pontoon and deck boats and its advanced styling distinguishes it from all other seats on the market. Best of all, the Venture's upholstery possibilities let a boat builder customise it for a unique look to any boat design, user preference or price point.

Ventilated: Seat back and pan are ventilated to allow pass-through of air and water for increased comfort.

Portability: Venture quickly folds away to allow more room for activity and fishing excitement. Then it can be easily removed and transported using the built-in carry handle.

Simple, Pinch-Proof Hinge and Lock: Push-button release automatically locks the seat back in an upright sitting position or the folded position for transport.

Certified and Simple to Install: The Venture Upholstered Folding Seat meets all ABYC H-31 seating requirements.

The seat bottom has molded-in T-Nuts in the universal 5" pattern. Requires only 4 bolts to fit on any standard pedestal.



Venture - Upholstered Folding Seat

Part No.	Description
AT971012	White Seat Shell, White Marine Grade Vinyl Upholstery
AT971022	Medium Grey Seat Shell, Grey Marine Grade Vinyl Upholstery

PROForm Folding Seat

Attwood's famous PROForm folding fishing seat remains one of the marine industry's most popular seats since its introduction over a decade ago.

The PROForm's 'molded-in' comfort makes the seat just as practical as the day that it was introduced, when it was Attwood's first success at engineering a seat so well that it sat great even without upholstery.

'Waterfall' Front Edge: Gently minimizes pressure behind the knees.

Curved Front Corners: Permit easy, comfortable movement when driving, fishing or relaxing.

Pinch-Resistant Hinge: Strong enough to withstand impact.

Seat Back Lock: Secures backrest in down position; no more vinyl straps and snaps.

Molded-In Support: Designed into the contours of the seat back and pan, offering comfort with or without padding.

Molded-In Colour: The high-impact polymer is strong and UV stable. Colours have been specially selected to coordinate with boat interiors, trim, carpet and vinyls.

Upholstery: Marine grade fabric is UV stable and weather resistant.

Foam Padding: Minimized to reduce cost and water absorption yet provide comfort.

Molded-In Drain Holes: Eliminate standing water; no more 'puddle sitting.'



PROForm Seats with Upholstered Onserts

Part No.	Description
AT70121014	White Seat with White Upholstered Onserts
AT70120044	Light Grey Seat with Blue Vinyl Upholstered Onserts
AT70125044	Light Grey Seat with Grey Vinyl Upholstered Onserts

SeaSport 2-7/8" Seat Mounts

SeaSport 2 7/8" products are built to handle the big water.

- Heavy duty 2-7/8" posts and 9" diameter machined bases are engineered for strength and safety in harsh off-shore conditions
- Ergonomic positive-locking handles with stainless steel components
- PowerLock™ Multi-Action handle controls both swiveling and height adjustment. No more wondering which handle does what
- TwinGlide™ Bushing ensures smooth operation and maximum stability at any height position
- EZ-Lock™ CAM-Action makes seat removal simple. When engaged, seat mount is posi-locked to the post and swivels freely

SeaSport 2-7/8" Seat Mounts

Part No.	Description
AT818641	Aluminium with Friction Control, 3° Tilt
AT828660	Aluminium with Friction Control, 3° Tilt, with Slider



AT828660

SeaSport 2-7/8" Bell Pedestals, Fixed Height

Part No.	Description
AT886051	5" High, Low Profile, 9" Machined Base, Fixed Height Bell Pedestal
AT860601	6" High, Satin Anodised Post, 9" Machined Base Fixed Height Bell Pedestal
AT886408	8" High, Satin Anodised Post, 9" Machined Base, 3° Tilt, Fixed Height Bell Pedestal Set with Seat Mount
AT8864125	12-1/2" High, Satin Anodised Post, 9" Machined Base, 3° Tilt, Fixed Height Bell Pedestal Set with Seat Mount
AT8864155	15-1/2" High, Satin Anodised Post, 9" Machined Base, 3° Tilt, Fixed Height Bell Pedestal Set with Seat Mount



AT8864125

SeaSport 2-7/8" Bell Pedestals, Adjustable Height - With Integral Seat Mount

Part No.	Description
AT88100	12-1/4" - 15-1/4" High, Satin Anodised Post, 9" Base, Adj. Height Bell Pedestal
AT89100	14-1/2" - 19-1/2" High, Satin Anodised Post, 9" Base, Adj. Height Bell Pedestal
AT88101	12-1/4" - 15-1/4" High, Satin Anodised Post, 9" Base, Adj. Height Bell Pedestal, with Slider
AT89101	14-1/2" - 19-1/2" High, Satin Anodised Post, 9" Base, Adj. Height Bell Pedestal, with Slider



AT889100



AT889101



TRIDENT MARINE®

Trident Marine Hoses

From fuel to bilge, there's a Trident Marine Hose to meet each of your on-board needs.

Trident Marine Hose Centre

With self dispensing reel boxes and colour coded icon labelling the Trident Marine Hose Centre dispenses hose smoothly and tangle free. It is practical and saves valuable space and time.



Part no. TRIPLAN16

Display dimensions: 137cm high x 122cm wide / 4.5ft high / 4ft wide

Display is comprised of the products below, stacked left to right:

Part No.	Description
TRI1200346	Bilge Hose - Dia 16mm, Length 15.24m
TRI1620126	Clear Reinforced PVC Hose - Dia 10mm, Length 15.24m
TRI1620586	Clear Reinforced PVC Hose - Dia 12.7mm, Length 7.62m
TRI1620346	Clear Reinforced PVC Hose - Dia 12.7mm, Length 15.24m
TRI25010005841B	Flex Marine Water Hose - Dia 16mm, Length 3.81m
TRI25010003441B	Flex Marine Water Hose - Dia 19mm, Length 3.81m
TRI25010010041B	Flex Marine Water Hose - Dia 25.4mm, Length 3.81m
TRI25010011441B	Flex Marine Water Hose - Dia 32mm, Length 3.81m
TRI3650146	Barrier Low Perm Type A1 Fuel Hose - Dia 6mm, Length 15.24m
TRI3650566	Barrier Low Perm Type A1 Fuel Hose - Dia 68mm, Length 15.24m
TRI3650386	Barrier Low Perm Type A1 Fuel Hose - Dia 10mm, Length 15.24m
TRI3650586	Barrier Low Perm Type A1 Fuel Hose - Dia 16mm, Length 15.24m
TRI1440346	Vac HD Bilge & Live Well Hose - Dia 19 mm, Length 15.24m
TRI1201186	Bilge Hose - Dia 32mm, Length 15.24m
TRI1201126	Bilge Hose - Dia 28.6mm, Length 15.24m
TRI25011241B	Flex Marine Water Hose - Dia 38mm, Length 3.81m
TRI1481006	Vac XHD Sanitation Hose - Dia 28.6mm, Length 15.24m
TRI1481126	Vac XHD Sanitation Hose - Dia 38mm, Length 15.24m
TRI329711241B	A2 Fuel Fill Hose - Dia 38mm, Length 3.81m
TRI4003006	PVC Vent Duct - White - Dia 76mm, Length 15.24m
TRI4004006	HD PVC Vent Duct - Black - Dia 102mm, Length 15.24m

Trident Marine Hoses



A2 Marine Fuel Hose



Wire Harness Conduit



Silicone Wet Exhaust & Water Hose



Trident Polyduct

Part No.	Description
TRI32911241B	A2 Corrugated Fuel Fill Hose - Dia 38mm, Length 3.81m
TRI1261006V2	Wire Hardness Conduit - Dia 25.4mm, Length 15.24m
TRI2001100125	Silicone Marine Wet Exhaust & Water Hose - Dia 12.7mm, Length 7.62m
TRI481300	Blue Polyduct Hose - Dia 76mm, Length 15.24m

Please note: Hoses are available in a variety of diameters / lengths

Please see www.bainbridgmarine.co.uk for the complete list of Trident products.



Inflatable Stand Up Paddle Board

This 10ft long inflatable stand up paddle board is made from two layers to ensure that no air is lost once inflated using the pump provided. The board is easy to stow and store, easy to set up, virtually indestructible and safer in the water than a conventional hard board. With the deck and lower panel joined with a number of taut fibres, the board is very rigid and capable of surfing waves or flat water paddling.

The paddle board has three memory rubber fins, pump point and leash attachment point. EVA deck grip provides extra control once on the paddle board and the central carry handle makes the board simple to transport.

Includes:

- 10ft inflatable paddle board
- 1.9m, 3 piece alloy fold-up paddle
- Pump
- Carry rucksack
- Repair Kit

Part No.	Description
RON0001	10ft Inflatable Stand Up Paddle Board







Attwood Pumps & Accessories

Sahara Automatic Bilge Pumps	52
Tsunami Aerator Pumps	52
Tsunami Dual Outlet Aerator Pumps	52
Heavy Duty Bilge Pumps	53
Float Switch with Cover	53
Float Switch	53
Bilge Switch	53
Shower Sump Pump Systems	54



Bilge and Aerator Pumps

Attwood electric bilge pumps deliver value and performance that's built to last. A complete selection of pumps and blowers are available for fishing boats, runabouts, cruisers, yachts, and commercial boats.

Attwood bilge pumps and blowers are tested and approved as standard equipment by leading boat manufacturers.

Sahara Automatic Bilge Pumps

The Sahara has everything contained in one compact yet durable package – pump, wire seals, strainer, and mercury-free switch – and installs quickly and easily in tight spaces. Pumps include 36" lengths of 16-gauge caulked and tinned copper wire.



AT45057



AT45077



AT451177

Part Number	GPH	Volts	Hose Size
AT45057	500	12	3/4"
AT45077	750	12	3/4"
AT451177	1100	12	1 1/8"

Tsunami Aerator Pumps

With their innovative engineering and compact design, Tsunami pumps deliver high output from a small package. Attwood use the most advanced material available, including the best quality bearings and state-of-the-art brushes, alloys and magnets. Their patented shaft seal prevents leaks caused by misalignment and caulked and tinned wiring eliminates wicking, prevents water damage and resists corrosion.

Three high-efficiency aerator pumps that move water at output capacities of 500 gph, 800 gph and 1200 gph. With their innovative engineering and compact design, Tsunami pumps deliver high output from a small package.



Part Number	GPH	Volts	Inlet Length & Dia	Outlet Style & Dia
AT46067	500	12	3 1/2" L x 3/4"	Threaded 3/4"
AT46087	800	12	3 1/2" L x 3/4"	Threaded 3/4"
AT46127	1200	12	3 1/2" L x 1 1/8"	Threaded 1 1/8"

Tsunami Dual Outlet Aerator Pumps

The advantage of the dual outlet is that you can feed multiple applications through a single thru-hull fitting. The Tsunami second outlet is integrated into the pressure chamber, so it looks – and pumps – like part of the aerator. Both of the pump's outlets are engineered for the precise position and angle that will deliver optimum performance.



AT46727

AT46707

Part Number	GPH	Volts	Inlet Length & Dia	Wire/Connector
AT46727	800	12	3 1/2" L x 3/4"	29" wire
AT46707	800	12	7/8" L x 3/4"	29" wire*

* Use with 3/4" seacock

Heavy Duty Bilge Pumps

Heavy-Duty Bilge Pumps integrate the highest quality bearings, brushes, alloys and magnets designed to withstand extreme usage cycles. The pumps employ an exclusive shaft and motor compartment, reducing wear and significantly extending pump life. Advanced resin compositions incorporated in exterior to resist chemicals such as engine oil, aggressive detergents and hose plasticisers.

Attwood's Heavy Duty bilge pump has unsurpassed durability and efficiency in a compact design to ensure electrical energy is converted to the pump rather than excess heat.



AT47304



AT47604 / AT47704

Part Number	GPH	Volts	Wire/Connector
AT47304	1700	12	36" wire
AT47604	2000	12	36" wire
AT47704	2000	24	36" wire

Bilge Pump Accessories

Float Switch with Cover

Converts bilge pumps to fully automatic operation. Maximum amp draw is 12 amps (at 12-volt D.C.) or 6-amps (at 24-Volts D.C.). Features a compact, low profile design that mounts on any surface from a horizontal up to a 24° angle. Incorporates a reliable and affordable mechanical switch that actuates pump motor at 2" water level.

Wire leads do not flex or hinge with the float as on some competitive models. Integral cover dampens bilge sloshing to reduce pump cycling, and prevents debris interference. Sealed switch mechanism resists moisture, fume-ignition, and electrical shock.



Part Number	Description	Volts	Wire/Connector
AT42017	Float Switch with Cover	12 and 24	36" wire

Float Switch

Converts bilge pumps to fully automatic operation. Maximum amp draw is 12 amps (at 12-volt D.C.) or 6-amps (at 24-Volts D.C.). Features a compact, low profile design that mounts on any surface from a horizontal up to a 24° angle. Incorporates a reliable and affordable mechanical switch that actuates pump motor at 2" water level. Wire leads do not flex or hinge with the float as on some competitive models. Integral cover dampens bilge sloshing to reduce pump cycling, and prevents debris interference. Sealed switch mechanism resists moisture, fume-ignition, and electrical shock.

Float switch installs directly onto the rear slots of the V-Series pump bracket. Features a convenient test knob to test pump operation.



Part Number	Description	Volts	Wire/Connector
AT42027	Float Switch	12 and 24	36" wire

Bilge Switch

Incorporates a proprietary Electronic Sensing technology to detect bilge water levels and trigger pump activation and has been engineered to operate in any bilge water mixture consistently without failure. Your pump won't be exposed to continuous cycling as the S3 switch can easily distinguish splashing bilge water, chemicals, sludge build up or foam and comes equipped with fully sealed electronics that are completely protected from water or chemical damage.

For added convenience, the bilge switch can be mounted on the floor of the bilge directly to a stringer wall or alongside the basket of the pump without added components or brackets. The S3 Series switch is also directly compatible with all competitive products and free of moving parts that can jam up, break or wear out over time.



AT48017



AT48027

Part Number	Description	Volts	Wire/Connector	Max Amp Draw
AT48017	Bilge Switch - White	12	36" wire	15A
AT48027	Bilge Switch - Dark Grey	24	36" wire	10A

Shower Sump Pump Systems

Shower Sump Pump Systems

Attwood's shower sump pump systems deliver excellent performance. Offering fast water flow into and out of sump. The lid snaps in to allow quick installation (and removal for cleaning) and includes a gasket to seal the sump box against overflow. The sump box even includes an air vent to prevent air locks.



AT41411



AT41421

Specifications

Part Number	Model	Volts	Fuse Size	Outlet Hose Size	Wire / Connector
AT41411	500 GPH	12	3 amps	3/4" ID	36" Wire
AT41421	750 GPH	12	5 amps	3/4" ID	36" Wire

Output Ratings

Model	Amp Draw	GPH Output@ Design Voltage 13.6 VDC			GPH Output@ Nominal Voltage 12.0 VDC		
		0 ft	3.3 ft	6.7 ft	0 ft	3.3 ft	6.7 ft
500 GPH	1.4	420	360	215	385	290	130
750 GPH	2.5	650	500	385	570	420	290



Bainbridge Marine Batteries

Dual Purpose Batteries	56
------------------------	----



Bainbridge Marine Batteries

These batteries are suitable for marine use as they are dual purpose, can be used for engine starting and service demands. With robust casings, they have charge indicators and lifting handles. Excellent value for money!

- Totally sealed
- Recombination technology
- 250 cycle
- Maintenance free
- Dual Purpose



Part No. Q001121



Part No. Q001122



Part No. Q001123



Part No. Q001124

Part Number	Nominal Voltage V	Capacity (AH)		MCA	CCA	Battery Sizes				Weight KG	Terminal Type
		Old Box Size	20AH			Length	Width	Height	Total Height		
Q001121	12	S85	70	500	460	254	175	210	210	17	STD
Q001122	12	S85	75	600	550	254	175	210	210	17	STD
Q001123	12	S110	110	700	640	308	175	210	225	26	STD
Q001124	12	S120	120	750	690	340	175	220	235	27	STD



Bostik - Simson Marine Range

Prep M	58
Prep P	58
Prep G	58
MSR CA	59
MSR CA sskf	59
Fast Tack	59
Deck Caulk	59

Hempel Paints & Coatings

Classic Antifoul	60
Cruising Performance Antifoul	60
Light Primer	60
Hard Racing Boottop	60
Brilliant Gloss	60
Deck Coating Inc Antislip Granules	61
SP Epoxy Systems	
SP Handipack	61
SP Ancillary	61
SP 106 Multi Purpose Epoxy	61
SP 320 HP Multi Purpose System	62
SP 115 Epoxy Laminating System	62
Eposeal 300 Universal Epoxy Primer	62
SP Microfibres	62
SP Microballoons	62

Hempel Boat Care Range

Pre-Clean	63
Shampoo	63
Clean & Shine Spray	63
Gelcoat Cleaning Spray / Gel	63
Gelcoat Cleaning Powder	64
Rubbing Liquid	64
Clean & Shine	64
Custom Marine Polish	64
Wax & Protect	64
RIB Cleaner	64
Textile Clean	65
Bilge Cleaner	65
Mildew Remover	65
Barnacle Remover	65
Alu-Protect	65



Simson Marine Special Range

To ensure seaworthiness of any vessel, Bostik Marine offers a variety of elastic bonding adhesive/sealant systems that provide exceptional weather and water-resistant properties. The range of marine products has been engineered for high-performance elastic bonding and sealing of marine plywood, aluminium, fiberglass or other composite materials used in building marine vessels.

- Extremely user friendly
- Efficient in use
- Long shelf life
- Durable
- Resistant to weather and UV influences
- Resistant to fresh and salt water
- Odourless
- Can be sanded and painted over
- Not susceptible to blistering
- Available in different packages and colours
- Solvent and isocyanate free

Marine Range Primer Systems

	Prep M (clear)	Prep P (clear)	Prep G (black)
Glass Coated with black out zone	■	■	
Glass - Uncoated	■		■
GRP	■		
Painted surface	■		
Wood		■	

Prep M 500ml Clear

Simson Prep M is a one-step pre-treatment for the improvement of the adhesion on closed substrates of several specific Simson products, based on Silyl Modified Polymer (SMP).

- Pre-treatment of plain aluminium, steel, copper and brass surfaces.
- Pre-treatment of powder coated metals
- Pre-treatment of lacquered metals (first make a test on the substrate to check possible effects)
- Pre-treatment of polyester (GRP)
- Pre-treatment of ABS
- Pre-treatment of PVC



Prep P 500ml Clear

Simson Prep P is a liquid pre-treatment for improving the adhesion of several Simson products on porous substrates. Consult the Technical Data Sheet of the particular product.

- Pre-treatment of mineral substrates, such as brickwork, concrete and lightweight concrete
- Pre-treatment of wooden substrates (such as seams in teakwood ship decks)



Prep G 30ml Black

Simson Prep G has been developed as a black pre-treatment for use on glass, not having a ceramic coating, in order to provide a UV-protecting coat, before applying special adhesives for bonding glass (also PMMA and PC).

- Pre-treatment of glass substrates without ceramic coating.
- Repair of damaged paint layers on metallic supports.



Part Number	Description
B0000599	Simson Prep M 500ml - Clear
B0001299	Simson Prep P 500ml - Clear
B0000575	Simson Prep G 30ml - Black



MSR-CA - Construction Adhesive

Simson MSR-CA is a durable, elastic and fast-curing SMP (Silyl Modified Polymer) based construction adhesive, developed especially for bonding applications in the marine industry.



Part Number	Description
BO413344	Simson MSR-CA 290ml - White
BO413368	Simson MSR-CA 290ml - Black

MSR-CA-sskf - Slow Skin Forming Construction Adhesive

Simson MSR-CA-sskf possesses the same properties as MSR-CA, but with slow skin formation for bonding large components. A perfect solution for applications like deck-to-hull bonding.



Part Number	Description
BO413450	Simson MSR-CA-sskf 600ml - Black

Fast Tack

MSR-FT is a permanently elastic SMP based adhesive with very high initial tack. On top of its high resistance to UV radiation and fresh and salt water, it also offers the advantage of bonding without clamping.



Part Number	Description
BO413436	Simson Fast Tack 290ml - Black

Deck Caulk

MSR-DC is an SMP based, easily sandable sealant for caulking seams in teak decks.



Part Number	Description
BO413405	Simson Deck Caulk 290ml - Black
BO413412	Simson Deck Caulk 600ml - Black

Technical Data

	Skin forming time (20°C/50%RH)	Open time (20°C/50%RH)	Cure after 24 hours (20°C/50%RH)	Shore-A Hardness (DIN 53105)	Temperature Resistance	Application Temperature	Tensile stress (100%) (DIN 53304/50 3/7)	Tensile stress at break (DIN 53304/50 3/7)	Paintable (20°C/50%RH)	Elongation at break (DIN 53304/50 3/7)	Green strength (Physical Properties (4°C/100)	Shear stress (DIN 53283/457M 2 (100 2)	Tear propagation (DIN 53315/52 3/4)
MSR CA	Approx. 10 mins	< 15 mins	Approx. 3 mm	Approx. 55	-40°C to +100°C	+5°C to +35°C	Approx. 2.0 Mpa	Approx. 5.0 Mpa	After 10 mins	Approx. 225%	Approx. 500 Pa	Approx. 2.5 Mpa	Approx. 15 N/mm
MSR CA - sskf	Approx. 15 mins	< 35 mins	Approx. 3 mm	Approx. 55	40°C to +100°C	+5°C to +35°C	Approx. 2.0 Mpa	Approx. 5.0 Mpa	After 10 mins	Approx. 225%	Approx. 500 Pa	Approx. 2.5 Mpa	Approx. 15 N/mm
MSR FT	Approx. 10 mins	< 15 mins	Approx. 3 mm	Approx. 65	-40°C to +100°C	+5°C to +35°C	Approx. 2.7 Mpa	Approx. 7.4 Mpa	After skin formed does not speed up speed	Approx. 225%	Approx. 100 Pa	Approx. 2.1 Mpa	Approx. 12 N/mm
MSR DC	Approx. 25 mins	-	Approx. 1 mm	Approx. 60	40°C to +100°C	+5°C to +35°C	Approx. 1.0 Mpa	Approx. 2.5 Mpa	-	Approx. 240%	Approx. 100 Pa	Approx. 2.1 Mpa	Approx. 10 N/mm



Hempel Classic Antifoul - Exclusive to Bainbridge

Hempel's Classic antifoul is a tin-free conventional antifouling of the soft type. It changes to final colour after approximately 1 week of exposure to water. Recommended for use on boats of glass fibre, wood, plywood, steel and ferr-cement with a speed below 15 knots.



Part Number	Colour	Size
Q090138	True Blue	2.5 ltr
Q090139	Black	2.5 ltr
Q090140	Souvenirs Blue	2.5 ltr
Q090141	Red	2.5 ltr

Cruising Performer Antifouling

Erodible antifouling, formulated to give optimum performance in all cruising areas. Thinner no.3, coverage/litre 12.5m²



Part Number	Colour	Size
Q090093	Black	750 ml
Q090095	True Blue	750 ml
Q090096	Dove White	750 ml
Q090097	Dove White	2.5 ltr
Q090098	Souvenirs Blue	750 ml
Q090099	Red	750 ml

Light Primer

A two component epoxy primer spray for the protection of all substrates.



Part Number	Colour	Size
Q008885	Off White	400 ml

Hard Racing Boottop

Strong, scrubbable antifouling will give bright colours for use on boottop/waterline. Thinner no.3, coverage/litre 13.8m²



Part Number	Colour	Size
Q009093	Black	375 ml
Q009094	Dark Blue	375 ml
Q009095	Red	375 ml
Q090092	Ultimate White	375 ml

Brilliant Gloss

As well as being flexible and resistant to salt water and spillage of mineral oil, Brilliant Gloss is also resistant to UV and can be applied to all exterior and interior surfaces above the waterline straight from the tin.



Part Number	Colour	Size
Q008892	Pure White	2.5 ltr
Q008890	Pure White	375 ml
Q008888	Matterhorn White	750 ml
Q008889	Town Grey	750 ml
Q008891	Pure White	750 ml
Q008893	Off White	750 ml
Q008894	Polar White	750 ml
Q008895	Pale Grey	750 ml
Q008896	Smoke Grey	750 ml
Q008897	Black	750 ml
Q008898	Cream	750 ml
Q008899	Britannia Blue	750 ml
Q009058	Flag Blue	750 ml
Q009059	Ice Blue	750 ml
Q009060	Marine Green	750 ml
Q009061	Survival Orange	750 ml
Q009062	Bordeaux Red	750 ml
Q009063	Radiant Red	750 ml
Q009096	Souvenirs Blue	750 ml
Q009097	Colbalt Blue	750 ml

Deck Coating Inc. Anti Slip Granules

Durable coating for deck areas - Contains fine granules for a non-slip finish.



Part Number	Colour	Size
Q090089	Light Grey	750 ml
Q090088	Mid Grey	750 ml
Q090091	Navy Blue	750 ml
Q090090	Pale Cream	750 ml
Q090087	White	750 ml

SP Epoxy Systems

Epoxy systems offer a combination of properties making them ideally suited for both boatbuilding and boat repair, giving lighter and stronger constructions. As adhesives they offer great strength and as coatings they provide outstanding water and abrasion resistance. Their convenient DIY pack sizes ensure that whether you are gluing, laminating, filling/fairing, coating or sheathing they offer extremely good value.

SP Handipack

Handipack is a multi-purpose epoxy, supplied only in a small pack. It is designed for quick repair work and small scale construction jobs. The system is extremely reactive with a pot-life of just 8 minutes at 20°C. It is therefore best suited to small tasks, and should not be applied in thicknesses exceeding 3mm.



Part Number	Description
Q090104	SP Handipack 375ml

SP Ancillary Kit

The ancillary kit contains everything required for use with either the Handipack or SP106 as a glue or as a filling and fairing material. Contains: Pot of microballoons - Pot of colloidal silica - Pot of Microfibres - 5 x mixing sticks - 2 x 13mm brushes - 4 pairs of protective gloves - 2 x small graduated mixing pots - 1m woven glass tape.



Part Number	Description
Q090105	SP Ancillary Kit

SP 106 Multi Purpose Epoxy with Fast Hardener

SP106 with Fast Hardener - A well established general purpose epoxy system for bonding, sheathing, filling, fairing and coating. Solvent-free, highly water resistant and has extremely strong bonding characteristics without requiring high clamping pressures. Can be used as a coating, adhesive, filler or as a laminating system. Mix at a 5:1 (resin:hardener) ratio by volume.

1kg Pack Contains:

- 0.85kg of Resin
- 0.15kg of Hardener

3.02kg Pack Contains:

- 2.56kg of Resin
- 0.46kg of Hardener



Part Number	Description
Q090106	SP 106 MP Epoxy with Fast Hardener - 1kg
Q090107	SP 106 MP Epoxy with Fast Hardener - 3.02kg

SP 106 Multi Purpose Epoxy with Slow Hardener

SP106 with Slow Hardener - A well established general purpose epoxy system for bonding, sheathing, filling, fairing and coating. Solvent-free, highly water resistant and has extremely strong bonding characteristics without requiring high clamping pressures. Can be used as a coating, adhesive, filler or as a laminating system. Mix at a 5:1 (resin:hardener) ratio by volume.

1kg pack contains:

- 0.85kg of Resin
- 0.15kg of Hardener

3.02kg pack contains:

- 2.56kg of Resin
- 0.46kg of Hardener

0.9kg pack contains:

- 2 x 0.46kg of Hardener Fast/Slow



Part Number	Description
Q090110	SP 106 MP Epoxy with Slow Hardener - 1kg
Q090111	SP 106 MP Epoxy with Slow Hardener - 3.02kg
Q090112	SO106 MP Fast/Slow Hardener - 2 x 0.46kg

SP 320 High Performance Multi Purpose System

Versatile, high performance, all purpose epoxy system. Particularly suitable for use as a clear coating. Add filler powders for an adhesive.



Part Number	Description
Q090115	SP 320 MP Epoxy with Slow Hardener - 4kg
Q090118	SP 320 MP Epoxy with Slow Hardener - 1kg
Q090117	SP 320 MP Epoxy with Fast Hardener - 4kg
Q090116	SP 320 MP Epoxy with Fast Hardener - 1kg

SP 115 Epoxy Laminating System

SP115 is a low viscosity, ultra clear epoxy laminating system. It has been designed for the manufacture of sail and surfboards which are to remain unpainted and where a very clear finish is required.

Part Number	Description
Q090113	SP 115 Epoxy Laminating System - 1kg
Q090114	SP 115 Epoxy Laminating System - 4kg

Eposeal 300 Universal Epoxy Primer

Easy to use, low viscosity solvent based epoxy primer which has been developed primarily for wood but can be used on other materials, ie grp, metals, stone, ferrocement, brick etc.

Quick drying and curing properties allow rapid over coating. 500ml resin and 500ml hardener.



Part Number	Description
Q090119	Eposeal 300 Universal Epoxy Primer - 1 litre
Q090120	Eposeal 300 Universal Epoxy Primer - 5 litres

Fillers and Additives**SP Microfibres**

Fine wood cellulose fibres used to make strong adhesives. They absorb a significant amount of epoxy giving a rich general purpose high strength gluing solution.

Part Number	Description
Q090125	SP Microfibres - 0.5kg
Q090126	SP Microfibres - 0.1kg

SP Microballoons

Hollow, low density, resin spheres, which displace the resin and offer lightweight, easy to sand glue. Reddish brown in colour making them cosmetically suitable for gluing wood.

Part Number	Description
Q090127	SP Microballoons - 0.1 kg
Q090128	SP Microballoons - 0.3 kg

SP Glass Bubbles

Hollow, white spheres, which are physically hard and produce a very waterproof filler mix ideal for use below the waterline and where sanding performance and colour are not of prime importance.

Part Number	Description
Q090129	SP Glass Bubbles - 0.12 kg
Q090130	SP Glass Bubbles - 0.3 kg

SP Colloidal Silica

Fine powder which can be added to existing filler mixes to reduce sag and improve handling characteristics, making it particularly useful on vertical surfaces.

Part Number	Description
Q090123	SP Colloidal Silica - 0.05 kg
Q090124	SP Colloidal Silica - 0.25 kg

SP Solvents A and B

Solvent A is a degreaser - fast epoxy solvent.

Solvent B is a tool cleaner - standard epoxy solvent.

Part Number	Description
Q090122	Solvent A - 1 litre
Q090121	Solvent B - 1 litre

Application and Sundry Items

Part Number	Description
Q090131	SP Mixing Pot - 0.5 litres
Q090132	SP Mixing Sticks x 100
Q090133	SP 10cc Syringe
Q090134	SP 50cc Syringe
Q090135	SP Syringe Kit
Q090136	SP 106/3.0kg Maxi Pump
Q090137	SP Mini Pump for 106/110/320

Hempel Boat Care Range

A boat will need maintaining during the season to ensure it keeps its good appearance and sailing capabilities and the coating system is maintained. How much maintenance and care is needed will depend on the environment in which the boat is sailed.

The range includes over twenty products formulated to clean, renew and protect all parts of the boat. There is a top quality product for every job from getting the gelcoat gleaming to protecting the rigging or cleaning covers. Boatcare products are user friendly and safe and ensure the boat stays in top condition.

Pre-Clean

Pre-Clean is a high strength cleaner and degreaser for the removal of fuel, oil, grease, waxes and silicone from gelcoat, painted and varnished surfaces. Use before painting and for deep cleaning.



Part Number	Description	Litres
Q008860	Pre-Clean	1

Shampoo

Shampoo is a concentrated solvent free cleaner for daily cleaning of gelcoat, painted and varnished surfaces as well as boat covers, tarpaulins and vinyl surfaces.



Part Number	Description	Litres
Q008864	Shampoo	1

Clean and Shine Spray (inc hose adapter)

Clean & Shine Spray is an easy-to-use concentrated wash and wax that cleans, shines and leaves a protective coating in one application. For the removal of dirt, grime, UV light degraded surface layers and other common contaminants on gelcoat, painted and varnished surfaces.



Part Number	Description	Litres
Q008854	Clean and Shine Spray	1

Gelcoat Cleaning - Spray or Gel

Quick, easy and ready to use foaming cleaner spray or non-abrasive gel, for removing marks and stains on your gelcoat and painted surfaces over large areas. Particularly good for cleaning deposits from the waterline. Chemical process avoids the need to rub or scrub the surface.



Part Number	Description	Litres
Q008857	Gelcoat Cleaning Spray	0.5
Q008855	Gelcoat Cleaning Gel	0.5

Gelcoat Cleaning Powder

Cleaning Powder is a strong, fine abrasive cleaning powder for the removal of tough deposits and stains on gelcoat surfaces, especially yellowing and discolouration from soil deposits in fresh or brackish water. Particularly suitable for non-slip deck areas.



Part Number	Description	Weight: g
Q008854	Gelcoat Cleaning Powder	750

Rubbing Liquid

Renew Rubbing Liquid is a fine abrasive rubbing compound to remove oxidation, stains and light scratch marks from most surfaces including aluminium. Restores and renews gloss and colour to gelcoat and painted surfaces. For manual and machine polishing.



Part Number	Description	Litres
Q008861	Rubbing Liquid	0.5

Clean and Shine

Clean & Polish is a high performance liquid that quickly and easily cleans, polishes and protects in one application, leaving a high gloss finish. For use on Gelcoat, painted and varnished surfaces. Excellent for removing machine compound swirl marks.



Part Number	Description	Litres
Q008853	Clean and Shine	1

Custom Marine Polish

Liquid polish which cleans, polishes and protects gelcoat, painted and varnished surfaces. Contains silicone which cures on the surface to create a protective barrier and a clear gloss.



Part Number	Description	Litres
Q008887	Custom Marine Polish	0.5

Wax and Protect

Liquid wax for use on gelcoat, painted and varnished surfaces, leaving an extremely glossy UV protective finish.



Part Number	Description	Litres
Q008866	Wax and Protect	0.5

RIB Cleaner

RIB Clean is a powerful, concentrated solvent-free cleaner and degreaser especially suited for removal of dirt and UV degradation. For use on RIB tubes, hulls and other rubber or vinyl surfaces. Can be used with pressure cleaning.



Part Number	Description	Litres
Q008862	RIB Cleaner	0.5

Textile Clean

Concentrated cleaner and degreaser for boat covers, sprayhoods, tarpaulins and other cotton and nylon materials.



Part Number	Description	Litres
Q008858	Textile Clean	0.5

Alu-Protect

Alu-Protect is a silicone-free oil for cleaning and protecting aluminium masts and booms, steel and stainless steel rigging and fittings. Penetrates into wire ropes and under fittings.



Part Number	Description	Litres
Q008851	Alu-Protect	0.5

Wax with TecCel

Wax & ProtectTecCel is a high performance liquid wax with TecCel technology providing a long-lasting glossy UV protective finish on gelcoat, painted and varnished surfaces. Leaves an easy-to-clean, water repellent surface. Suitable for manual and machine use.



Part Number	Description	Litres
Q008867	Wax with TecCel	0.5

Bilge Cleaner

A user-friendly product which dissolves and emulsifies oil and grease, removes dirt and cleans the bilge leaving a fresh citrus odour. It is also suitable for other areas where contaminants accumulate.



Part Number	Description	Litres
Q008871	Bilge Cleaner	1

Mildew Remover

An easy-to-use product for the effective removal of mildew and stains without bleaching or discoloration. Does not destroy thread and canvas.

Do not use on non-colour fast textiles.



Part Number	Description	Litres
Q008872	Mildew Remover	1

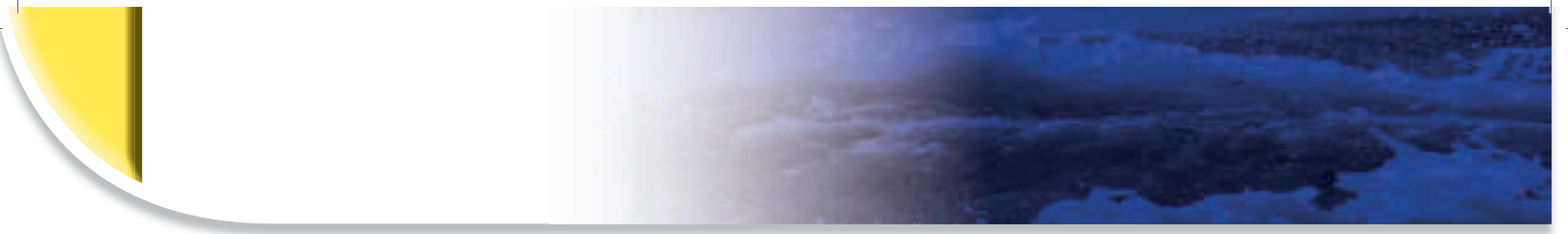
Barnacle Remover

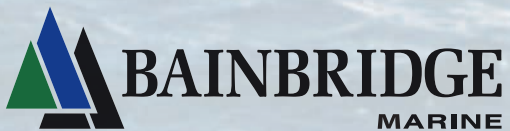
Effectively removes barnacles using a combination of chemical and mechanical treatments. For use on outdrives, propellers, bottom of boats and similar areas.

Contains acid - use personal protection equipment.



Part Number	Description	Litres
Q008873	Barnacle Remover	0.5





Bainbridge International Ltd.

8 Flanders Park, Hedge End, Southampton, SO30 2FZ UK

Tel: +44 (0) 1489 776030 Fax: +44 (0) 1489 776035

email: bainbridgmarine@bainbridgeint.co.uk

www.bainbridgmarine.co.uk