


Boat Top Fittings

Sister Clips - Plastic & Stainless Steel

- Durable sister clips for drawstrings and ties.



Part No.	Description	Pack Qty
B606	Nylon Sister Clips	5 Pairs
 B605	Stainless Steel Sister Clips	1

Dodger Hank

- Allow quick and easy attachment on dodgers to guard rails.
- Smarter than lacing.



Part No.	Wire Size: mm/in	Grommet Size	Colour	Pack Qty
A036	6 1/4	0 to 5	White	10

Shock Cord Cover Clip

- Used with a lacing knob or other cord cover clip for a fast and simple tie-down.
- Does not require tool to set.
- Now easier attaching system.



Part No.	Overall Length: mm/in	Colour	Pack Qty
G040BK	86 3 3/8	Black	50
G040WT	86 3 3/8	White	50

Deck Hinge Fittings - Screw Pin

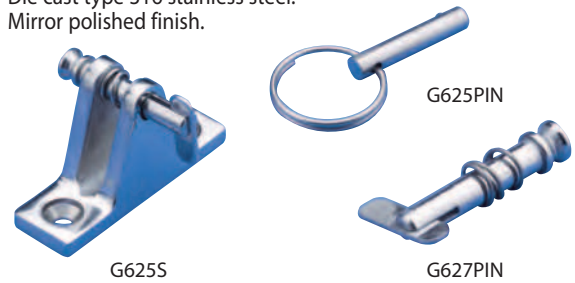
- Die cast type 316 stainless steel.
- Mirror polished finish.



Part No.	Description
G622S	Flat fitting with screw pin
G623S	Angle fitting with screw pin
G626S	Concave fitting with screw pin

Deck Hinge Fittings - Removable Pin

- Die cast type 316 stainless steel.
- Mirror polished finish.



Part No.	Description
G628SQP	Angle fitting with quick release pin
G625S	Flat fitting with removable drop nose pin
G625SQP	Flat fitting with quick release pin
G627PIN	Replacement drop nose pin for G625S
G625PIN	Replacement quick release pin for G625SQP

Lanyard

- Lanyard is used to attach quick release pin to the deck hinge to prevent accidental loss.



Part No.	Description	Length: mm/inch
G625LAN	Stainless steel wire	155 6 1/2

HD Folding Deck Hinge

- Hinge system compensates for different angles of deck and coamings without the need for wedges.
- Folds flat when canopy is removed preventing snagging and injury.
- Manufactured from type 316 stainless steel.
- Use with G611S, G621S, G631S and G641S.



Part No.	Description
G607S	HD Folding Deck Hinge

Boat Top Fittings

Quick Release Deck Mount

- Spring-loaded release button ejects eye end for almost instant frame removal.
- Stylish and unique design.
- Manufactured from type 316 stainless steel.
- Use with G611S, G621S, G631S and G641S.



Part No.	Description
G605S	Quick Release Deck Mount

HD Quick Release Deck Mount

- Spring-loaded release button ejects eye end for almost instant frame removal.
- Stylish and unique design.
- Manufactured from type 316 stainless steel.
- Use with G611S, G621S, G631S and G641S.



Part No.	Description
G604S	HD Quick Release Deck Mount

Side Mount Fitting

- Die cast type 316 stainless steel.
- Mirror polished finish.
- Accepts all sizes of eye end.



G624S



G629S

Part No.	Description
G624S	4 hole side mount
G629S	2 hole side mount

Universal Flat Deck Hinge

- Die cast type 316 stainless steel.
- Deck hinge swivels 180°.



Part No.	Description
G607S	Flat Universal Deck Hinge

Frame Tube Hinge with Quick Release Pin

- Heavy duty design and construction.
- Allows frame folding.
- Quick release locking pin.
- Manufactured from 316 stainless steel.

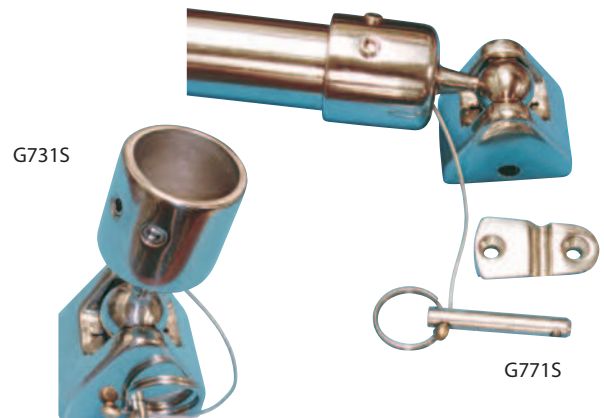


G747S

Part No.	Description	Tube Size: mm/inch
G744S	Heavy Duty Stainless Steel Tube Hinge	25 1
G747S	Heavy Duty Stainless Steel Tube Hinge	22 7/8

Ball Swivel with Quick Release Deck Mount & Eye End

- Manufactured from 316 stainless steel.
- Greater range of motion.
- Base screws to the deck.
- Removing quick pin allows hinge to slide off the base.
- Double set screws.



G731S

G771S

Part No.	Description
G770S	22mm/7/8" Ball Swivel Jaw Slide
G771S	22mm/7/8" Ball Swivel Deck Hinge
G730S	25mm/1" Ball Swivel Jaw Slide
G731S	25mm/1" Ball Swivel Deck Hinge

Boat Top Fittings

Eye Ends

- Die cast type 316 stainless steel.
- Mirror polished finish.



G611S



G621S



G631SHD



G641SHD

Part No.	Description
G611S	Eye End for 19mm/ $\frac{3}{4}$ " Tube
G621S	Eye End for 22mm/ $\frac{7}{8}$ " Tube
G631SHD	Heavy Duty Eye End for 25mm/ 1" Tube with 2 Set Screws
G641SHD	Heavy Duty Eye End for 32mm/ 1 $\frac{1}{4}$ " Tube with 2 Set Screws

Jaw Slides

- Die cast type 316 stainless steel.
- Mirror polished finish.



G610S



G620S



G630SHD



G640SHD

Part No.	Description
G610S	Jaw Slide for 19mm/ $\frac{3}{4}$ " Tube
G620S	Jaw Slide for 22mm/ $\frac{7}{8}$ " Tube
G630SHD	Heavy Duty Eye End for 25mm/ 1" Tube with 2 Set Screws
G640SHD	Heavy Duty Eye End for 32mm/ 1 $\frac{1}{4}$ " Tube with 2 Set Screws

Split Jawslide/Rail Fitting

Mounts without the need to disassemble the rail. Ideal for use on rails that are welded together. Simply slide the two halves together on either side of the rail and they interlock. The fitting fastens easily with a single nut and bolt to the rail in the exact position you desire.

- Package consists of one rail fitting (2 halves) and a stainless steel screw and nut.
- Type 316 stainless steel.
- Order G625PIN or G627PIN to connect eye end.



Part No.	For Use With Tube Size
G820S	22mm/ $\frac{7}{8}$ inch outside diameter
G830S	25mm/ 1 inch outside diameter
G840S	31mm/ 1 $\frac{1}{4}$ inch outside diameter

Universal Deck Hinges

Universal deck hinge compensates for different angles of decks and coamings. Made from mirror polished stainless steel, even vertical surfaces can be accommodated. Available with a screw or quick release pin for easy removal.

- Die cast type 316 stainless steel.
- Mirror polished finish.
- Accepts all sizes of eye end.
- Compensates for different deck and coaming angles including vertical surfaces.
- Available with screw or quick release pin.



Part No.	Description
G615S	Universal deck hinge with screw
G615SQP	Universal deck hinge with quick release pin

Gemlock Collapsible Strut & Hinge



Open



Closed



Gemlock Pre-Made Strut with Hinge

- Completely assembled struts with stainless steel hinges, either 22mm/ 7/8 inch or 25mm/1 inch tubing, locking sleeve and spring balls.
- Uses: folding dodger frames (DropTop™ style), spreader bars on biminis (strapless biminis), stowable dinettes and chart tables, cantilever supports for swim platforms and drop seats, support struts for davits and towers.



Part No.	Description	Tube Size: mm/in	Length: mm/in
G750SET/3	Adjustable Strut	22 7/8	900 36
G750SET/6	Adjustable Strut	25 1	900 36

*Note: Single strut – 2 struts required to make a folding top.

Gemlock™ Collapsible Frame Hinge

The Gemlock™ Hinge System is the most simple and effective way to build collapsible supports and folding frames.

- Simple operation: Slide back the locking sleeve and pop the hinge to fold frame.
- A complete installation will require 1 hinge, 1 locking sleeve, 2 snap buttons and 2 machine screws.
- Full installation instructions sheet available upon request.
- Use for folding: Spray hoods, biminis and tables.



G750S



G758



G760

Part No.	Description	Tube Size: mm/in
G750S	Gemini Hinge	22 7/8
G751S	Gemini Hinge	25 1
G758	Snap Button, Hollow Head	
G760	Locking Sleeves	22 7/8
G761	Locking Sleeves	25 1

Side Mount Jaw Slide

- Allows outboard or inboard mounts of Gemlock struts.
- Outboard mount allows the Gemlock strut to act as grab rail.
- Grab rail stands off to allow bimini to fold flat.

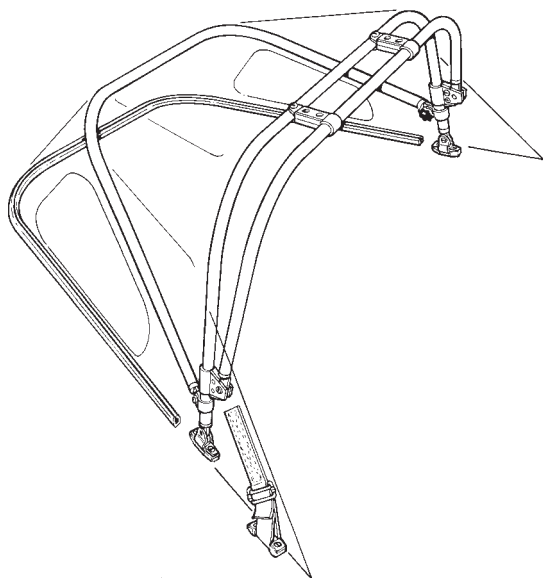


Part No.	Description
G6355	25mm/1" Stainless Steel

Stainless Steel / Plastic Fittings

Canopy Hinge Fittings

These canopy hinge fittings for use on stainless steel tubing have been designed specifically for the marine industry. They are produced from type 316 stainless steel, and white nylon so that they will not corrode. The swivelling base design is unique in that it allows for any possible variation in deck lines to be accommodated, eliminating any need for machining or padding.



Universal Deck Fittings - Stainless/Plastic

A swivelling base fitting achieved by a three piece design allows for 200° variation in mounting angle

- Fitting consists of three pieces which assemble into one fitting.



Part No.	Description	Pack Qty
G603	Universal deck fitting	10

End Plugs - Stainless/Plastic

White nylon injection molding around 1/8 inch stainless steel.

- Plug can be secured by gluing, with a self tapping screw, or by a dowel pin.

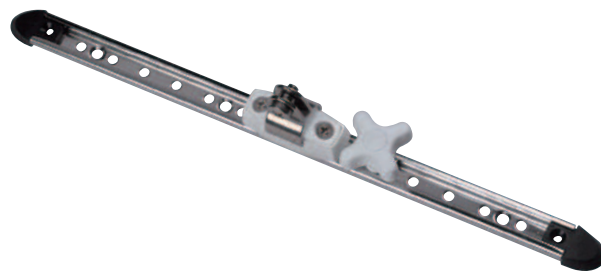


Part No.	Tube (External): mm/in	Tube (Internal): mm/in	Pack Qty
G675	19 3/4	15.9 5/8	10
G676	19 3/4	16.7 11/16	10
G679	22 7/8	19.8 3/4	10

Canopy Slider & Track

Universal Deck Fitting mounted on Ronstan® 16mm track for simple and quick stowage of sprayhood frames.

- Universal deck fitting allows 200 degrees of rotation.
- 30cm/12" length of Type 316 stainless steel track supplied with plastic endcaps.
- Solid stainless steel track slide is fitted with easy grip plunger.
- Use with G675, G676 and G679.



Part No.	Description
G590	Canopy Slide Track Unit Set
G590C	Canopy Slide Unit Only



Stainless Steel / Plastic Fittings

Canopy Slide Kit

Economical slide kit designed to utilise off cut tubes for track and slide.

- Each set comprises: 3 end plugs, 2 support pillars and 1 hand clamp.



Part No.	Description
G674	Canopy Slide Kit 3/4"

Duo Track System

- Quick release adjustment.
- Manufactured from 316 stainless steel.
- Ultra low profile design with positive locking mechanism.
- Easily operated by hand or foot.
- Ideal for mounting biminis on center cockpits.



G723END



G721S

Part No.	Tube (External): mm/in
G723END	Duo Track Stainless Steel End Stop
G721S	Duo Track Car with Low Profile Deck Hinge (G645S)

Tube Clamps - Stainless

- Clamp comes complete with spacer and screw to use with end plugs.
- Clamp fits over tube and allows movement of the plug space-end fitting.



Part No.	Tube (External): mm/in		Pack Qty
G655	19	3/4	10

Grab Rail Terminal Fitting

Grab rails add an additional safety feature to the canopy and can be easily retro-fitted.

- Made from type 316 stainless steel with nylon trim.
- Attaches to the grab rail with standard end plugs, and to the exposed part of the hood frame by clamping screws.
- Takes up any misalignment between the grab rail and the hood for easy fitting.
- Sold in handed pairs.



Part No.	Tube (External): mm/in		Pack Qty
G660	19	3/4	1 Pair
G661	22	7/8	1 Pair
G662	25	1	1 Pair

Stainless Steel / Plastic Fittings

Grab Rail Stand Off Fitting

Grab rails add an additional safety feature to the canopy and can be easily retro-fitted.

- Fixes to the existing frame and clamps to the grab rail.
- Fits around the cloth so that no cutting of the material is necessary.
- Maximum space between either the terminal fittings and a stand off fitting or between stand off fittings should not exceed 500mm (20 inches).



Part No.	Sprayhood to Rail Tube: mm/in		Pack Qty
G665	19 to 19	3/4 to 3/4	1 Pair
G666	22 to 19	7/8 to 3/4	1 Pair
G667	25 to 19	1 to 3/4	1 Pair
G668	22 to 22	7/8 to 7/8	1 Pair

Hand Clamps - Stainless

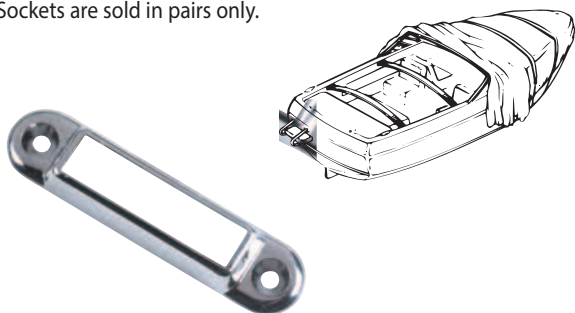
- Large nylon tensioning knob allows quick and simple adjustment.
- Clamp comes complete with spacer and screw to use with end plugs.
- Clamp fits over tube and allows movement of the plug space-end fitting.



Part No.	Tube (External): mm/in		Pack Qty
G650WT	19	3/4	10
G651WT	20	3/4	10
G652WT	22	7/8	10
G653WT	25	1	10

Boat Cover Socket

- Use one or more pairs of sockets with 40mm/1 3/4" fiberglass batten material to support boat cover.
- Use No 8 flat or oval head screws.
- Sockets are sold in pairs only.



Part No.	Description	Pack Qty
G670	Chrome die cast	10 pair

Black Nylon Boat Top Fittings

- High strength black nylon fittings.
- Excellent resistance to UV.
- Works with either stainless steel or aluminium tubing.



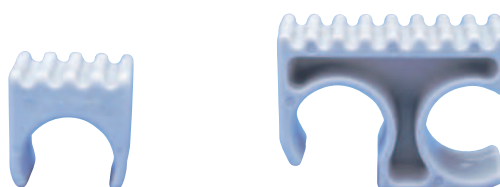
Part No.	Description	Pack Qty
G621BK	For Use With Tube Outside Dia 22mm/7/8"	50
G620BK	For Use With Tube Outside Dia 22mm/7/8"	50
G622BK	Flat Fitting With Tube Pin	50

Sunblocker Clip

Sunblocker is a self insulated protective clip which eliminates contact between your metal tubular top frame and the clear plastic windows.

Two or three Sunblocker clips on metal frame tubing can give maximum protection against destruction of clear plastic windows, by reducing singeing, scorching and heat cracking.

- Marine grey colour.
- Designed cooling air vents.
- All rounded corners eliminates abrasion.



G638

G739

Part No.	Description	Pack Qty
G638	Single For Use with Tube Outside Diameter 22mm/7/8"	50
G639	Single For Use with Tube Outside Diameter 25.4mm/1"	50