

HSX WOVENS

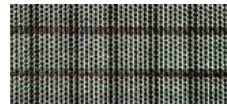
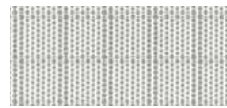
HSX is Bainbridge's range of premium woven fabrics, for performance sails. HSX covers a broad range of uses, with Balanced, Strong Fill, Strong Warp and Vectran® Hybrid. High Tenacity and Super Tenacity yarns (HT & ST) are tightly woven to maximise the weave intersections and reduce the reliance on the finishing. Each style has its own distinctive weave pattern.

UV inhibitors provide a sailcloth that is tough and durable with a long service life. Made to our exacting standards in Europe.



HSX RIPSTOP 26

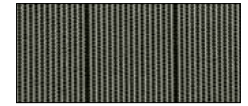
- ◆ Balanced construction for a wide range of applications
- ◆ Unique double ripstop grid
- ◆ High tenacity yarn in warp and fill for highly stabilized weave



Description	White	Grey	Average gsm	Average Sm Oz	Tenacity Warp	Tenacity Fill	Warp - Dtex	Fill - Dtex	Width mm
HSXP626	✓	✓	270	6.32	HT	HT	280+(280x2)	550+940	1400
HSXP726	✓	✓	348	8.13	HT	HT	330+(330x2)	660+1100	1400
HSXP826	✓	✓	402	9.39	HT	HT	550+(550x2)	700+1100	1400
HSXP926	✓	✓	432	10.09	HT	HT	550+(550x2)	940+1440	1400
HSXP1026	✓	✓	455	10.63	HT	HT	830+(830x2)	1100+1440	1400

HSX STRONG FILL 56

- ◆ Fill orientated cloth for high aspect sails
- ◆ Double fill yarn gives a 10mm fill stripe weave
- ◆ Combination of HT and ST yarns for optimised construction



Description	White	Grey	Average gsm	Average Sm Oz	Tenacity Warp	Tenacity Fill	Warp - Dtex	Fill - Dtex	Width mm
HSXP656	✓	✓	270	6.32	HT	HT	280	660+(660x2)	1400
HSXP756	✓	✓	333	7.78	HT	HT	330	830+(830x2)	1400
HSXP856	✓	✓	372	8.69	HT	HT	330	940+(940x2)	1400
HSXP956	✓	✓	402	9.40	HT	HT	550	940+(940x2)	1400
HSXP1056	✓	✓	460	10.75	HT	HT	550	1100+(1100x2)	1400
HSXP1156	✓	✓	485	11.30	HT	HT	550	1300+(1300x2)	1400

HSX STRONG WARP 15

- ◆ Warp orientated cloth with high tenacity yarns suitable for radial applications
- ◆ Double warp yarn gives a warp stripe weave
- ◆ Warp tension during precision finishing to minimise warp crimp



Description	White	Grey	Average gsm	Average Sm Oz	Tenacity Warp	Tenacity Fill	Warp - Dtex	Fill - Dtex	Width mm
HSXP515	✓	✓	225	5.26	HT	HT	280+(280x2)	330	1400
HSXP615	✓	✓	245	5.72	HT	HT	330+(330x2)	330	1400
HSXP715	✓	✓	310	7.24	HT	HT	330+(330x2)	550	1400
HSXP815	✓	✓	345	8.06	HT	HT	550+(550x2)	550	1400
HSXP915	✓	✓	400	9.35	HT	HT	550+(550x2)	830	1400
HSXP1015	✓	✓	450	10.51	HT	HT	830+(830x2)	940	1400

Note: All data based on griage unless stated otherwise

