



Bainbridge

SAILCLOTH

BA1^{S1}

Cutting Service

Fully vacuumed, flat 11.0m long x 2.7m wide, multi-tool cutting including pizza wheel, tangent knife, plotting tool heads, and PatternSmith software for in-house design, digitising, and nesting capabilities.

Industries: Combining our vastly experienced team with a state of the art cutting machine allows us to cut a wide range of materials for customers across a variety of industries, including but not limited to:

- Sailmaking
- Covermaking
- Graphics
- Automotive
- Upholstery
- Packaging
- Medical
- Defence
- Tent and marquee
- Inflatable structure
- Flooring
- Outdoor equipment

Bainbridge Cutting Service (BCS) offers you:

- Increased capacity and output
- The opportunity to meet spikes in demand and large one-off orders
- A streamlined production process
- Maximised material yield
- Significantly reduced waste
- A clean consistent cut

Materials: Our Blackman & White automated cutting machine provides a perfect cut across a wide variety of materials, including but not limited to:

- Woven Sailcloth
- Laminates
- Vinyl upholstery fabrics
- Composites
- Vinyl
- Spinnaker nylons
- Cover acrylics and polyesters
- PVC textiles
- Cardboard
- Hypalon

Marketing support

Bainbridge International has always recognised that as a trade supplier our success is dependent on the success of our customers. With this in mind, Bainbridge continues to update and evolve the marketing support it offers. This ranges from a comprehensive leaflet and sample system to websites dedicated to both the trade and helping the end user understand that specifying Bainbridge products is an investment in performance and value.



info@bainbridgeint.co.uk

Contents

Spinnaker

MPEX	4 - 5
AIRX	6 - 7

Wovens

SPX - Woven	8 - 9
SPX - Classic	10
SPX - Black & Grey	11
SPX - Storm Orange	12
SPX - UV	12
SPX - Colours	13
HSX - Woven	14 - 15
HSX-V	16 - 17

Laminates

DIAX	18 - 19
------	---------

Tapes

SuperLuff	20 - 23
Luff Tape	23
Luff Foam	23
UV Protection - PSA	24 - 25
Premium Polyester - Insignia	26
Sailcloth Tape	27 - 31

Bainbridge Services	32 - 33
Conversion Tables & Glossary	34
Contact Details & Overseas Agents	35



MPEX

SPINNAKER FABRICS

Delivering a spinnaker fabric with consistent performance throughout the fabric weight range coupled with excellent tear strength and durability.

- ◆ Cruising spinnaker fabric developed to offer the optimum balance between durability, value and range
- ◆ Specially designed for cruise and club race application
- ◆ High strength 6.6 nylon yarn used throughout, creating a very strong cloth which performs even at high wind loads
- ◆ High density and low porosity weave construction for high tear strengths, reducing damage risk from rig contact
- ◆ Ideal weave and finish for snuffers and furling units - upper weights are stronger than equivalent polyester - ideal for handling local strain caused by furlers
- ◆ Finish and elongation figures are complimentary across the whole range, allowing for composite weights to be used, especially useful for furling sails



	White	Royal Blue	Red	Aqua Blue	Yellow	Grey	Black	Tempest Grey
MPEX70N	✓	✓	✓	✓	✓	✓	✓	✓
MPEX90N	✓	✓	✓	✓	✓	✓	✓	✓
MPEX300N	✓	-	-	-	-	-	-	-
MPEX350N	✓	-	-	-	-	-	-	-

AWS (Apparent Wind Speed, knots) Custom colours to matched references available to special order - please contact us for more details.

Description	Application	Construction Warp x Fill	Ripstop mm	Width mm	Weight (gsm)	AWS
MPEX70N	Robust 3/4oz with medium finish	40 x 40	6.5 x 6.5	1520	48	12
MPEX90N	High strength durable cloth ideal for the offshore cruiser	70 x 70	7 x 7	1520	70	16
MPEX300N	Ideal for snuffers and reaching when AWS is higher for application on yachts 50 - 75ft	210 x 210	7 x 7	1520	130	20
MPEX350N	High performance super duty cloth for bigger yachts and storm spinnaker applications	210 x 210	7 x 7	1520	150	22

Please note: Colour representations for Sailcloth, Cover Material and other dye coloured items shown are the closest approximate match permissible by print process. Customers should be aware that the colour of fabrics will alter in appearance to the eye by the light and environment, e.g. bright blue environments will change yellow to greener shades.

MPEX

SPINNAKER FABRICS

MPEX70N generic 0.75oz multi-purpose nylon spinnaker fabric, designed specifically for cruise and club race applications. Manufactured using the same technology as AIRX, but with greater emphasis on durability and value.

- ◆ Woven from high tenacity nylon
- ◆ Impregnated and coated for low air porosity and durability
- ◆ Balanced construction
- ◆ Ideal weave and finish for snuffers and furling units, ideal for handling local strain caused by furlers

- ◆ **Weight: 48gsm / 1.12smoz**
- ◆ Width: 1520mm / 60in
- ◆ Specially designed for cruise and club race application

MPEX90N generic 1.5oz multi-purpose nylon spinnaker fabric, designed specifically for cruise and club race applications. Manufactured using the same technology as AIRX, but with greater emphasis on durability and value.

- ◆ Woven from high tenacity nylon
- ◆ Impregnated and coated for low air porosity and durability
- ◆ Balanced construction
- ◆ **Weight: 68gsm / 1.59smoz**
- ◆ Width: 1520mm / 60in
- ◆ Specially designed for cruise and club race application



Application Guide

Boat Length Feet	Boat Length Metre	Sail Type	Application		
			Cruising Gennaker	Light-Medium All-Purpose	Medium-Heavy All-Purpose
25 - 35	7.5 - 10.5	Cruise	70	70	70
		Club Race	70	70	70
35 - 45	10.5 - 13.5	Cruise	70	70	70
		Club Race	70	70	70
45 - 55	13.5 - 16.5	Cruise	90	70	90
		Club Race	90	70	70
55 - 65	16.5 - 19.5	Cruise	90	90	90
		Club Race	90	90	90
65 - 75	19.5 - 22.5	Cruise	300	90	90
		Club Race	90	90	300
75 - 85	22.5 - 25.5	Cruise	300	300	300
		Club Race	300	300	300
85 - 95	25.5 +	Cruise	350	350	350
		Club Race	350	350	350

Please note: This application table should be used as a guide only.





SPINNAKER FABRICS

Grand-Prix quality, race proven performance - AIRX the winner's choice.

- ◆ High tenacity 6.6 nylon yarns in a high density construction delivering light sails in higher wind ranges
- ◆ Double ripstop weave delivers exceptional burst and tear strength and reduces damage from rig contact and handling
- ◆ Fabric bias specifically engineered by weight to match optimum sail design
- ◆ High water repellency provides best physical performance and minimum sailing weight
- ◆ High density weave constructions deliver extremely low porosity which generates maximum power
- ◆ Elongation results make AIRX ideal for modern asymmetric sails using step-down construction
- ◆ AIRX excels in dealing with higher loads created by these designs
- ◆ Finish and elongation figures are complimentary across the whole range, ideal for strong lightweight composite race applications



	Arctic White	Royal Blue	Red	Aqua Blue	Yellow	Silver	Black	Tempest Grey
AIRX400N	✓	-	-	-	-	-	-	-
AIRX500N	✓	✓	✓	-	-	-	-	-
AIRX600N	✓	✓	✓	✓	✓	✓	✓	✓
AIRX650N	✓	✓	✓	✓	✓	✓	✓	✓
AIRX700N	✓	✓	✓	✓	✓	✓	✓	✓
AIRX800N	✓	✓	✓	✓	✓	✓	✓	✓
AIRX900N	✓	✓	✓	✓	✓	✓	✓	✓

Description	Finish	Application	Construction Warp x Fill	Width mm	Weight (gsm)	AWS
AIRX400N	VMG / Medium	Lightweight Grand Prix VMG	20 x 20	1520	26	7
AIRX500N	Firm	Ideal for most 1/2oz Applications and one of the lightest 0.5oz nylon materials available	30 x 20	1520	30	8
AIRX600N	Firm	Versatile for a wide range of Wind Strengths	30 x 30	1520	37	10
AIRX650N	Firm	Satisfies the 40gsm minimum class weight rule - a winning fabric	30 x 30	1520	40	10
AIRX700N	Firm	High strength 3/4oz with a very stable and durable weave - for Grand Prix racers looking for ultimate performance	30 x 30	1520	45	12
AIRX800N	Firm	Increases the scope of range above AIRX 700N, a first choice fabric for reaching Asymmetrics	45 x 45	1520	53	14
AIRX900N	Firm	Extreme strength and durability for ultimate off-shore performance	70 x 70	1520	67	16

AWS (Apparent Wind Speed, knots).

Please note: Colour representations for Sailcloth, Cover Material and other dye coloured items shown are the closest approximate match permissible by print process. Customers should be aware that the colour of fabrics will alter in appearance to the eye by the light and environment, e.g. bright blue environments will change yellow to greener shades.

AIRX400N - AIRX500N - AIRX600N - AIRX650N - AIRX700N - AIRX800N - AIRX900N

Grand Prix Spinnaker Fabrics combine unprecedented strength, performance and quality.

- ◆ Features exceptional burst and tear strength, allowing lighter sails to be used in higher wind ranges
- ◆ Unparalleled strength and efficiency
- ◆ Superb water repellency due to zero porosity finish
- ◆ Class leading warp, fill & bias performance
- ◆ Excellent durability



Asymmetric Spinnaker - Application Guide

Boat Length Feet	Boat Length Metre	Sail Type	A1	A2	A3	A4	A5
			Reacher	Runner	Reacher	Runner	Reacher
25 - 35	7.5 - 10.5	Club Race	500	500	650	700	800
		Race	500	500	650	700	700
35 - 45	10.5 - 13.5	Club Race	600	500 650 700	700 800	700	800
		Race	600	650	700	700	800
45 - 55	13.5 - 16.5	Club Race	700	500 650 700	800	700	800
		Race	700	500 650 700	800	700	800
55 - 65	16.5 - 19.5	Club Race	700	700	900 / 800	800	900
		Race	700	700	900 / 800	800	900
65 - 75	19.5 - 22.5	Club Race	800	800	900	800	900
		Race	700 800	800	900 / 800	800	900



Symmetric Spinnaker - Application Guide

Boat Length Feet	Boat Length Metre	Sail Type	S1	S2	S3	S4	S5
			Reacher	Runner	Reacher	Runner	Reacher
25 - 35	7.5 - 10.5	Club Race	500	500	650	700	800
		Race	400 500	400 500	650	650	700
35 - 45	10.5 - 13.5	Club Race	600	500 600 650	800 / 700	700	800
		Race	500	500 600	800 / 700	700	800
45 - 55	13.5 - 16.5	Club Race	700	500 650 700	800	700	800
		Race	700	500 650 700	800	700	800
55 - 65	16.5 - 19.5	Club Race	700	700	900 / 800	800	900
		Race	700	650 700	900 / 800	800	900
65 - 75	19.5 - 22.5	Club Race	800	800	800	800	900
		Race	700 800	800	900 / 800	800	900

Please note: Application tables should only be used as a guide.



SPX is a range of durable sailcloth utilising the latest weaving and finish techniques to deliver consistent quality, reliability and performance. It features tightly woven yarns with UV protection throughout. SPX incorporates high tenacity polyester across the range, whilst still providing ease of handling. Within the SPX range there are different constructions and colours suitable for a wide range of sail applications. Designed and made in Europe.



- ◆ Near parity strength in warp and fill 'balances' the cloth and make it suitable for low aspect sail designs
- ◆ SPX Balanced is produced to suit a larger variety of sail applications and features high tenacity yarns for strength and durability

Description	Average gsm	Average SmOz	Tenacity Warp	Tenacity Fill	Warp - Dtex	Fill - Dtex	Width mm
SPX425	165	3.90	MT	HT	167	280	1400
SPX525	225	5.26	HT	HT	280	330	1400
SPX625	265	6.20	HT	HT	280	550	1400
SPX725	320	7.47	HT	HT	330	660	1400
SPX825	367	8.57	HT	HT	550	830	1400
SPX925	390	9.11	HT	HT	550	940	1400
SPX1025	445	10.40	HT	HT	830	1100	1400



- ◆ Strong Fill is produced as a high sley fabric with high fill denier
- ◆ This makes it ideal for high aspect sail designs

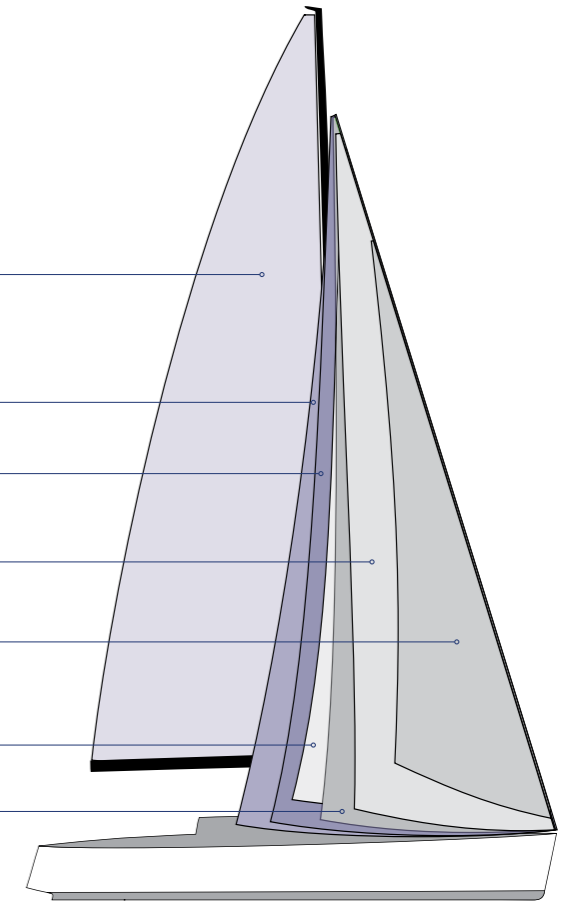
Description	Average gsm	Average Sm Oz	Tenacity Warp	Tenacity Fill	Warp - Dtex	Fill - Dtex	Width mm
SPX755	348	8.13	HT	HT	330	830	1400
SPX855	380	8.85	HT	HT	330	940	1400
SPX955	405	9.46	HT	HT	550	940	1400
SPX1055	445	10.40	HT	HT	550	1100	1400
SPX1155	485	11.35	HT	HT	550	1300	1400



Note: All data based on grieg unless stated otherwise

SPX Crosscut Sail Application

LOA ft	24-30	30-35	35-40	40-45	45-50	50-55
Main	625	725 755	825 855	925 955	1025 1055	1155
Genoa 1	525	525	625	725	825	925
Genoa 2	625	725	825	925	1025	1155
Genoa 3	625	755	855	955	1055	1155
Genoa 4	755	855	955	1055	1155	1055
Furling Genoa	625	725	825	925	1025	1155
High Aspect Jib	625	755	855	955	1055	1155



Please note: Application tables should only be used as a guide.



Image © RYA/Paul Wyeth



- ◆ Tan and Cream colours in a wide range of weights
- ◆ Performance with a traditional look and easy handling
- ◆ Balanced construction covers most classic boat types



Description	Classic Cream	Classic Tan	Average gsm	Average Sm Oz	Tenacity Warp	Tenacity Fill	Warp - Dtex	Fill - Dtex	Width mm
SPX525	-	✓	223	5.2	HT	HT	280	330	1400
SPX625	✓	✓	278	6.5	HT	HT	280	550	1400
SPX725	✓	✓	364	7.6	HT	HT	330	660	1400
SPX825	✓	✓	364	8.5	HT	HT	550	830	1400
SPX925	✓	✓	415	9.7	HT	HT	550	940	1400



Please note: Colour representations for Sailcloth, Cover Material and other dye coloured items shown are the closest approximate match permissible by print process. Customers should be aware that the colour of fabrics will alter in appearance to the eye by the light and environment, e.g. bright blue environments will change yellow to greener shades.



- ◆ SPX black utilises the same durable construction, in a colour-fast "stealth" black



Description	Black	Grey	Average gsm	Average Sm Oz	Tenacity Warp	Tenacity Fill	Warp - Dtex	Fill - Dtex	Width mm
SPX425	✓	✓	165	3.90	MT	HT	167	280	1400
SPX525	✓	✓	225	5.26	HT	HT	280	330	1400
SPX625	✓	✓	265	6.20	HT	HT	280	550	1400
SPX725	✓	✓	320	7.47	HT	HT	330	660	1400
SPX825	✓	✓	367	8.57	HT	HT	550	830	1400
SPX925	✓	✓	390	9.11	HT	HT	550	940	1400
SPX1025	✓	✓	445	10.40	HT	HT	830	1100	1400



SL See pages 20-23 for SuperLuff to match your sailcloth

Please note: Colour representations for Sailcloth, Cover Material and other dye coloured items shown are the closest approximate match permissible by print process. Customers should be aware that the colour of fabrics will alter in appearance to the eye by the light and environment, e.g. bright blue environments will change yellow to greener shades.



SPX Storm Orange sailcloth is specially developed to comply with international safety regulations for heavy weather and storm sails.

- ◆ SPX Storm Orange gives maximum visibility
- ◆ Balanced construction
- ◆ Available in both 825 (8.5oz) and 1025 (10.6oz) styles
- ◆ Pressure dye process: Ensuring greater colour consistency
- ◆ Proven durability and performance
- ◆ A must for all bad weather conditions



Description	Storm Orange	Average gsm	Average Sm Oz	Tenacity Warp	Tenacity Fill	Warp - Dtex	Fill - Dtex	Width mm
SPX825	✓	367	8.57	HT	HT	550	830	1400
SPX1025	✓	445	10.40	HT	HT	830	1100	1400



- ◆ Additional UV coating on one side only, makes this 4oz fabric ideal for UV strips and protection
- ◆ Other colours available with a minimum order quantity

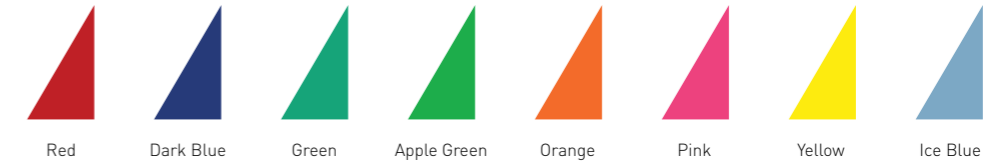


Description	Grey UV	Navy UV	White UV	Average gsm	Average Sm Oz	Tenacity Warp	Tenacity Fill	Warp - Dtex	Fill - Dtex	Width mm
SPX425	✓	✓	✓	165	3.90	MT	HT	167	280	1400



SPX Colours are produced to suit a large variety of sail applications and feature high tenacity yarns for strength and durability.

- ◆ The same durable balanced construction used across the range.
- ◆ Ideal for small boat and school sail applications
- ◆ Pressure dye process: Ensuring greater colour consistency
- ◆ Proven durability and performance
- ◆ Other colours / weights available on request



	Red	Dark Blue	Green	Apple Green	Orange	Pink	Yellow	Ice Blue
SPX425	✓	✓	✓	-	-	-	-	-
SPX625	✓	✓	-	✓	✓	✓	✓	✓

Description	Average gsm	Average Sm Oz	Tenacity Warp	Tenacity Fill	Warp - Dtex	Fill - Dtex	Width mm
SPX425	165	3.90	MT	HT	167	280	1400
SPX625	265	6.20	HT	HT	280	550	1400



Please note: Colour representations for Sailcloth, Cover Material and other dye coloured items shown are the closest approximate match permissible by print process. Customers should be aware that the colour of fabrics will alter in appearance to the eye by the light and environment, e.g. bright blue environments will change yellow to greener shades.

HSX WOVENS

HSX is Bainbridge's range of premium woven fabrics, for performance sails. HSX covers a broad range of uses, with Balanced, Strong Fill, Strong Warp and Vectran® Hybrid. High Tenacity and Super Tenacity yarns (HT & ST) are tightly woven to maximise the weave intersections and reduce the reliance on the finishing. Each style has its own distinctive weave pattern.

UV inhibitors provide a sailcloth that is tough and durable with a long service life. Made to our exacting standards in Europe.



HSX RIPSTOP 26

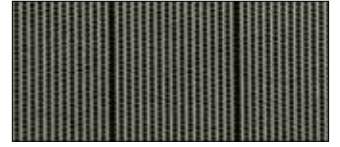
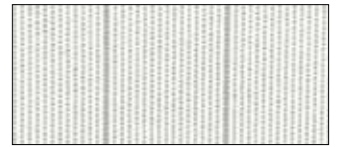
- ◆ Balanced construction for a wide range of applications
- ◆ Unique double ripstop grid
- ◆ High tenacity yarn in warp and fill for highly stabilized weave



Description	White	Grey	Average gsm	Average Sm Oz	Tenacity Warp	Tenacity Fill	Warp - Dtex	Fill - Dtex	Width mm
HSXP626	✓	✓	270	6.32	HT	HT	280+(280x2)	550+940	1400
HSXP726	✓	✓	348	8.13	HT	HT	330+(330x2)	660+1100	1400
HSXP826	✓	✓	402	9.39	HT	HT	550+(550x2)	700+1100	1400
HSXP926	✓	✓	432	10.09	HT	HT	550+(550x2)	940+1440	1400
HSXP1026	✓	✓	455	10.63	HT	HT	830+(830x2)	1100+1440	1400

HSX STRONG FILL 56

- ◆ Fill orientated cloth for high aspect sails
- ◆ Double fill yarn gives a 10mm fill stripe weave
- ◆ Combination of HT and ST yarns for optimised construction



Description	White	Grey	Average gsm	Average Sm Oz	Tenacity Warp	Tenacity Fill	Warp - Dtex	Fill - Dtex	Width mm
HSXP656	✓	✓	270	6.32	HT	HT	280	660+(660x2)	1400
HSXP756	✓	✓	333	7.78	HT	HT	330	830+(830x2)	1400
HSXP856	✓	✓	372	8.69	HT	HT	330	940+(940x2)	1400
HSXP956	✓	✓	402	9.40	HT	HT	550	940+(940x2)	1400
HSXP1056	✓	✓	460	10.75	HT	HT	550	1100+(1100x2)	1400
HSXP1156	✓	✓	485	11.30	HT	HT	550	1300+(1300x2)	1400

HSX STRONG WARP 15

- ◆ Warp orientated cloth with high tenacity yarns suitable for radial applications
- ◆ Double warp yarn gives a warp stripe weave
- ◆ Warp tension during precision finishing to minimise warp crimp

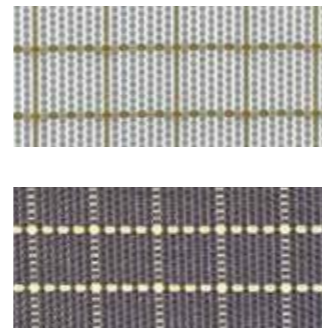


Description	White	Grey	Average gsm	Average Sm Oz	Tenacity Warp	Tenacity Fill	Warp - Dtex	Fill - Dtex	Width mm
HSXP515	✓	✓	225	5.26	HT	HT	280+(280x2)	330	1400
HSXP615	✓	✓	245	5.72	HT	HT	330+(330x2)	330	1400
HSXP715	✓	✓	310	7.24	HT	HT	330+(330x2)	550	1400
HSXP815	✓	✓	345	8.06	HT	HT	550+(550x2)	550	1400
HSXP915	✓	✓	400	9.35	HT	HT	550+(550x2)	830	1400
HSXP1015	✓	✓	450	10.51	HT	HT	830+(830x2)	940	1400

Note: All data based on griegie unless stated otherwise



- ◆ HSXV offers a premier hybrid fabric, incorporating super low stretch Vectran® yarns in a warp / fill ripstop matrix
- ◆ Balanced construction ideal for many performance applications
- ◆ Exceptional strength and durability
- ◆ Super tenacity polyester and Vectran® Hybrid
- ◆ Suitable for radial and crosscut applications
- ◆ The ultimate in woven sailcloth



Description	White	Grey	Average gsm	Average Sm Oz	Tenacity Warp	Tenacity Fill	Warp - Dtex	Fill - Dtex	Width mm
HSXV627	✓	✓	260	6.08	ST	ST	280+440	500+440	1400
HSXV727	✓	✓	335	7.82	ST	ST	300+440	600+440	1400
HSXV827	✓	✓	384	8.96	ST	ST	450+750	750+750	1400
HSXV927	✓	✓	401	9.38	ST	ST	550+750	850+750	1400

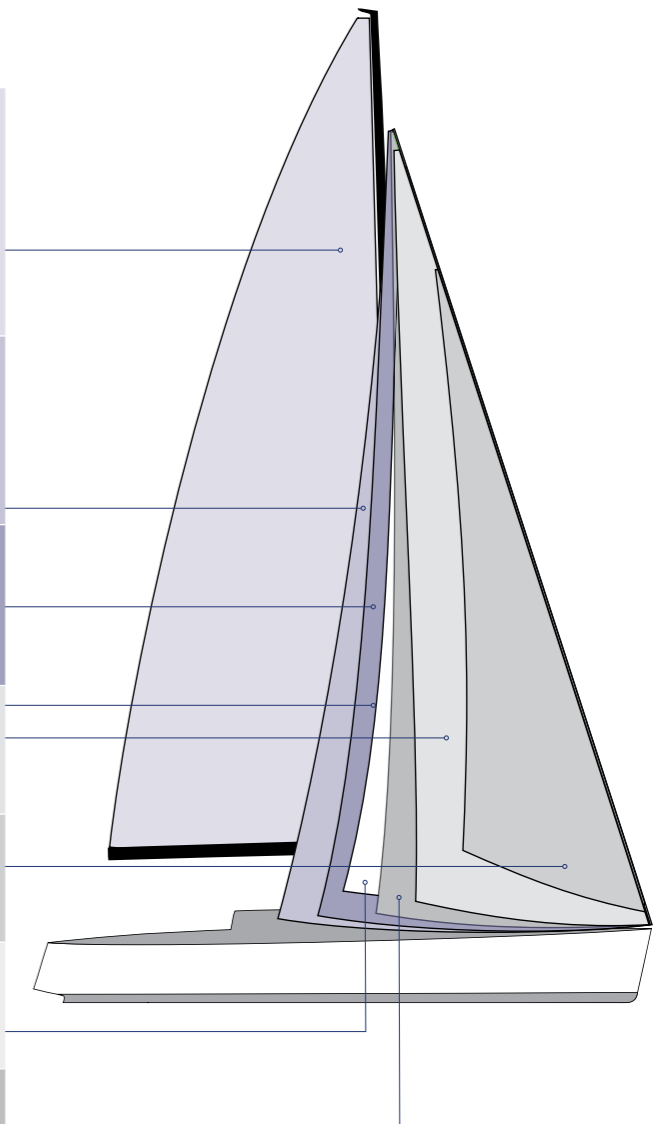


Photography © Graham Snook

Please note: Colour representations for Sailcloth, Cover Material and other dye coloured items shown are the closest approximate match permissible by print process. Customers should be aware that the colour of fabrics will alter in appearance to the eye by the light and environment, e.g. bright blue environments will change yellow to greener shades.

HSXP & HSXV*
Crosscut Sail Application

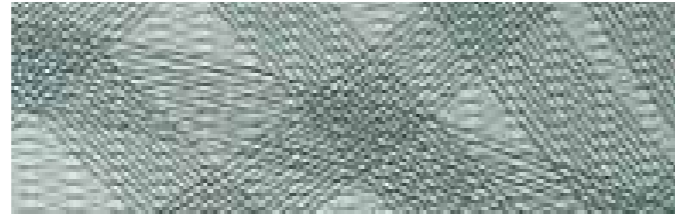
LOA ft	24-30	30-35	35-40	40-45	45-50	50-55
Main	626	726	726	826	926	
	656	756	715	856	956	927
	615	715	826	926	915	1056
	627	727	856	956	927	
Genoa 1	626	626	626	627	726	726
	615	615	615	726	715	715
	627	627	627	715	727	826
						815
Genoa 2	626	626	726	826	826	926
	615	656	715	815	815	915
	627	627	727	827	827	927
						927
Genoa 3	626	726	826	826	956	915
	656	756	856	856	915	927
	615	715	815	815	927	1056
	627	727	827	827		
Genoa 4	626	726	826	926	956	926
	656	756	856	956	927	927
	615	715	815	915	1056	1056
	627	727	827	927		
Furling Genoa	626	726	726	826	827	926
	615	715	715	815	926	915
	627	727	727	827	915	927
			826	826	927	
High Aspect Jib	626	726	856	827	956	927
	656	756	815	956	927	927
	615	715	827	927	1056	1056
	627	727				



*Noted in Red.



Please note: Application tables should only be used as a guide.



Diax Custom Laminate panels have been developed combining the experience gained from years of sailcloth production and the examination of extensive data gathered from nearly every type of sail and cloth. Our use of computer aeroelastic modelling allows us to put the yarns in exactly the required places for the loads that are predicted for a wide variety of usage and conditions.

Diax is sold as panels only, and are put together and finished by you, the sailmaker. Bainbridge will receive your design (complete with yarn panel layout) and supply you with the panels. Alternatively, we can take your design and apply our yarn layout to the design and supply the panels. Or again, we can design the sail with the correct layout and then supply the panels to be finished.

The Diax process is a logical development of sailcloth manufacturing which Bainbridge has been at the heart of for generations. The research and development in these materials has been adapted and applied to a new process to produce stronger, lighter, faster and longer lasting performance sails. Our Diax membranes offer several advantageous developments over other custom membrane production yarn laying.

Features include:

- ◆ Custom lamination: fibre choice, mix and distribution are perfected for the particular sail and the specific boat
- ◆ Strong lamination: use of stronger, higher quality resins giving longer life lamination than conventional sail cloth
- ◆ Efficient use of materials: Diax yarns are laid in custom arrays with all the yarns being laid exactly where they are needed, providing the lightest, strongest and most durable sail available in the market today

Substrates

Films:	0.5, 0.75 and 1 mil
Filmless:	White, dark, grey and black Heavy and light weight
Taffetas:	Grey and white Double and single external

Yarns

Polyester (PET)

This is a highly developed material with great strength and durability, which can accept many levels and types of finish.

Benefits:

- ◆ Excellent resiliency
- ◆ Great abrasion resistance
- ◆ High UV resistance
- ◆ Elevated flex strength
- ◆ Low cost
- ◆ Low absorbency for quick drying

PET has been replaced by stronger more technical fibres for the most serious racing applications, but remains the most popular sailcloth due to its low price and high durability.



Aramid

An aromatic polyamide fibre is basically similar molecularly with Nylon®. It has six sided molecular rings, which are formed into rods when the fibre is drawn.

Benefits:

- ◆ High stability
- ◆ Low stretch
- ◆ Zero creep

These benefits are also the reason it is susceptible to flex fatigue and abrasion.



Twaron®

A modified aramid fibre, which is similar molecularly with Nylon®. Twaron® has six sided molecular rings, which are formed into rods when the fibre is drawn.

Benefits:

- ◆ High stability
- ◆ Low stretch
- ◆ Zero creep

In a similar way to Aramid also suffers flex fatigue. It has an outstanding ability to resist stretch and withstand loads and abuse before breaking is the benchmark.

Available in black or gold.

Black: 1200 Dtex, 1600 Dtex, 2400 Dtex, 2800 Dtex, 3200 Dtex
Gold: 1500 Dtex, 3000 Dtex



Vectran®

This is a polyester-based fibre, but unlike polyester, is an aromatic polyester. It is synthesized from naphthalene and ethylene glycol, making it an aromatic polyester.

Benefits:

- ◆ Strength
- ◆ Stability
- ◆ Prevention of creep

Vectran® is a long chain molecule and classified as a liquid crystal, as its molecules can form crystalline structures whilst still liquid.



Carbon

High modulus synthetic fibre made from carbon atoms.

Benefits:

- ◆ Unaffected by UV exposure
- ◆ Exceptionally low stretch

Each carbon filament thread is a bundle of many thousand carbon filaments. A single filament is a thin tube with a diameter of 5-8 micrometers and consists almost exclusively of carbon - arranged in a regular hexagonal pattern.

Available in:

Black: 1800 Dtex, 3600 Dtex



Dyneema®

Made from a very high molecular weight polyethylene, Dyneema® gets its huge strength from this very long chain, rather than a series of highly stable rods.

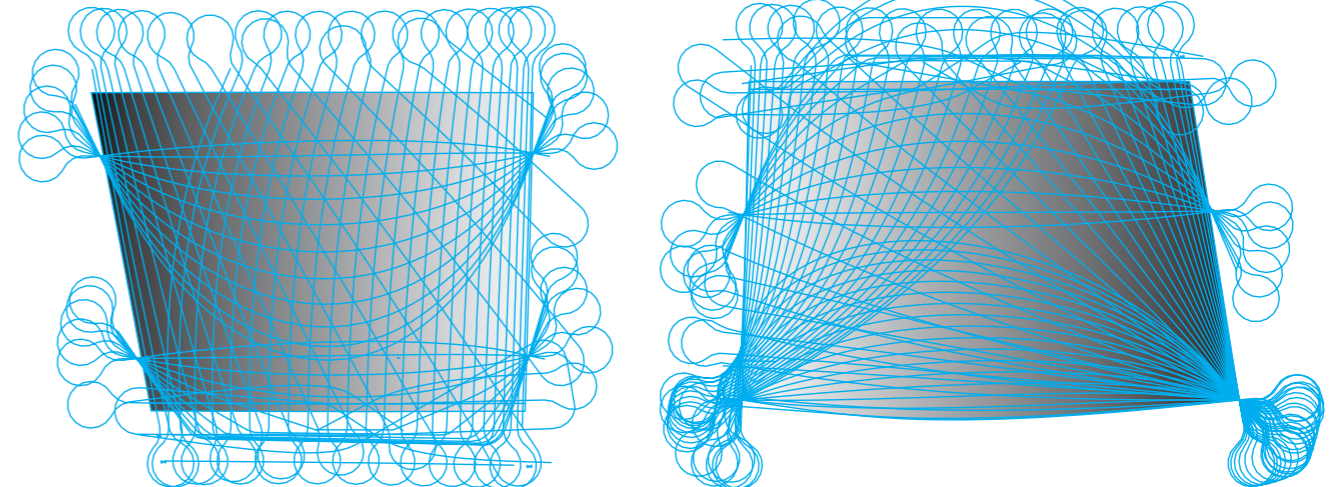
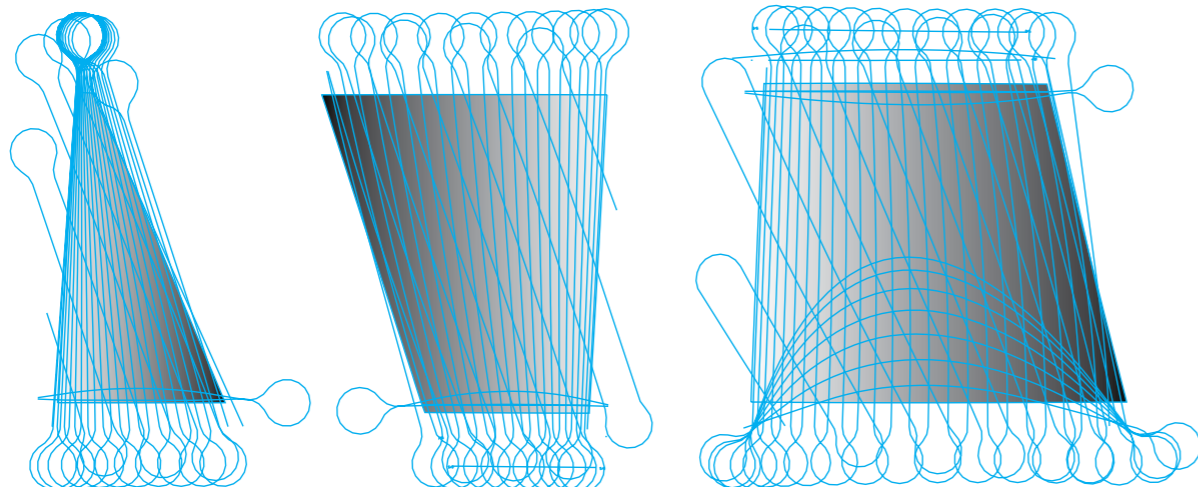
Benefits:

- ◆ Very high stretch modulus
- ◆ Superior breaking strain
- ◆ Unaffected by flex
- ◆ Superior UV resistance
- ◆ Abrasion resistant

This explains the great flex fatigue property. The creep factor (slow elongation with load over time) has been a problem, but new versions have dealt with this.

Available in:

SK 78: 1580 Dtex
SK 99: 800 Dtex



SL SuperLuff

- ◆ Coloured stitching for fast and easy identification
- ◆ Sewn construction – not heat welded
- ◆ Totally encapsulated high quality hard braid luff rope
- ◆ Made using Bainbridge Sailcloth
- ◆ Carefully controlled finished tape diameter to fit all types of headstay foils
- ◆ It's not just super tuff – it's **SuperLuff**

Custom SuperLuff tapes are available in colours and sizes to suit you project.

Please contact us with your specific requirements.

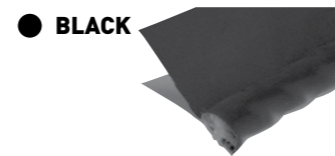
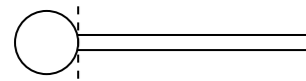
Stitch Colour Coding Key	Based on finished size
Yellow	4mm
Red	5mm
Green	6mm
Blue	7mm



SL SuperLuff • BOLT ROPES

○ WHITE

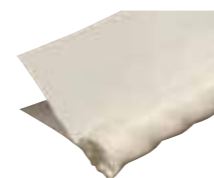
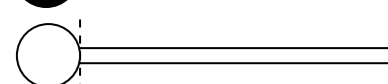
● BLACK



Part no.	Rope Dia: mm	Pre-finished Tape Width mm:	Finished size: mm	Cloth weight: oz	Reel length: m	UOM	Colours
L141	6	100	7	6	100	Metre	○
L142	6	80	7	6	100	Metre	○
L144	8	80	9	5	100	Metre	○
L145	4	80	5	6	100	Metre	○
L147	6	100	7	7	100	Metre	○
L149	4	80	5	6	100	Metre	●
L148	8	125	9	8	100	Metre	○

SL SuperLuff • SINGLE PRE-STRETCHED

○ WHITE

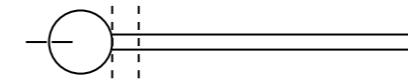


Part no.	Rope Dia: mm	Pre-finished Tape Width mm:	Finished size: mm	Cloth weight: oz	Reel length: m	UOM	Colours
L150	7	80	7.5	5	100	Metre	○
L151	7	100	8	7	100	Metre	○
L152	9	80	9.5	5	100	Metre	○

Please note: Reel lengths vary. Average reel 100m.

SL SuperLuff • SINGLE - LIGHT

○ WHITE



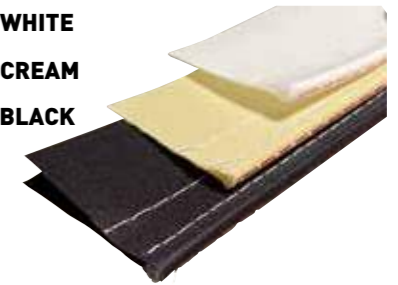
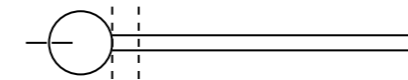
Part no.	Rope Dia: mm	Pre-finished Tape Width mm:	Finished size: mm	Cloth weight: oz	Reel length: m	UOM	Colours
L401LT	4	100	5	6	100	Metre	○

SL SuperLuff • SINGLE - POLYESTER

○ WHITE

● CREAM

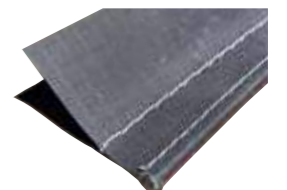
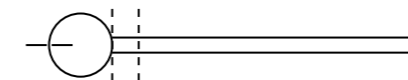
● BLACK



Part no.	Rope Dia: mm	Pre-finished Tape Width mm:	Finished size: mm	Cloth weight: oz	Reel length: m	UOM	Colours
L400	3	100	4	7	100	Metre	○
L401	4	100	5	7	100	Metre	○ ● ●
L402	5	100	6	7	100	Metre	○ ● ●
L403	6	100	7	7	100	Metre	○ ●

SL SuperLuff • SINGLE RIPSTOP

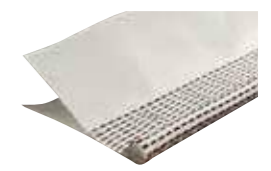
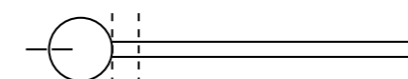
● GREY



Part no.	Rope Dia: mm	Pre-finished Tape Width mm:	Finished size: mm	Cloth weight: oz	Reel length: m	UOM	Colours
L401GYP	4	100	5	6.0 HSX Ripstop	100	Metre	●
L402GYP	5	100	6	6.0 HSX Ripstop	100	Metre	●
L403GYP	6	100	7	6.0 HSX Ripstop	100	Metre	●

SL SuperLuff • SINGLE TEFLON®

○ TEFLON®

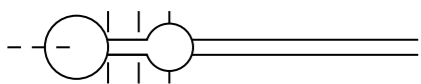
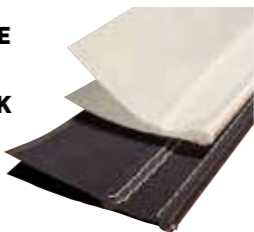


Part no.	Rope Dia: mm	Pre-finished Tape Width mm:	Finished size: mm	Cloth weight: oz	Reel length: m	UOM	Colours
L401T	4	100	5	8 Teflon®	20/100	Metre	○
L402T	5	100	6	8 Teflon®	20/100	Metre	○
L403T	6	100	7	8 Teflon®	20/100	Metre	○

SL SuperLuff • DOUBLE - POLYESTER

○ WHITE

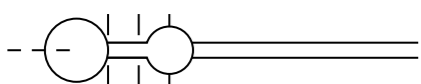
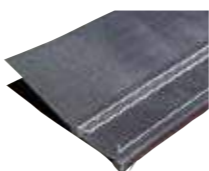
● BLACK



Part no.	Rope Dia: mm	Pre-finished Tape Width mm:	Finished size: mm	Cloth weight: oz	Reel length: m	UOM	Colours
L440	3	125	4	7	100	Metre	○
L441	4	125	5	7	100	Metre	○ ●
L441LT	4	125	5	6	100	Metre	○
L442	5	125	6	7	100	Metre	○ ●
L442LT	5	125	6	6	100	Metre	○
L443	6	125	7	7	100	Metre	○ ●

SL SuperLuff • DOUBLE - RIPSTOP

● GREY

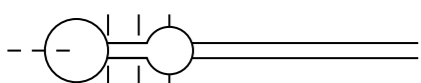
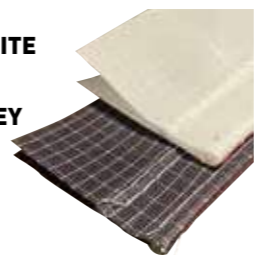


Part no.	Rope Dia: mm	Pre-finished Tape Width mm:	Finished size: mm	Cloth weight: oz	Reel length: m	UOM	Colours
L441GYP	4	125	5	6.0 HSXP Ripstop	100	Metre	○
L442GYP	5	125	6	6.0 HSXP Ripstop	100	Metre	○
L443GYP	6	125	7	6.0 HSXP Ripstop	100	Metre	○

SL SuperLuff • DOUBLE - VECTRAN®

○ WHITE

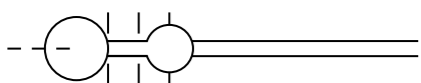
● GREY



Part no.	Rope Dia: mm	Pre-finished Tape Width mm:	Finished size: mm	Cloth weight: oz	Reel length: m	UOM	Colours
L441V	4	125	5	6.0 HSXV Ripstop	100	Metre	○ ●
L442V	5	125	6	6.0 HSXV Ripstop	100	Metre	○ ●
L443V	6	125	7	6.0 HSXV Ripstop	100	Metre	○ ●

SL SuperLuff • DOUBLE - DYNEEMA®

○ WHITE

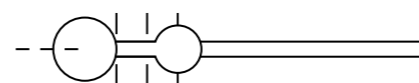


Part no.	Rope Dia: mm	Pre-finished Tape Width mm:	Finished size: mm	Cloth weight: oz	Reel length: m	UOM	Colours
L441D	4	125	5	8 Dyneema®	20/100	Metre	○
L442D	5	125	6	8 Dyneema®	20/100	Metre	○
L443D	6	125	7	8 Dyneema®	20/100	Metre	○

Please note: Reel lengths vary. Average reel 100m.

SL SuperLuff • DOUBLE - TEFLON®

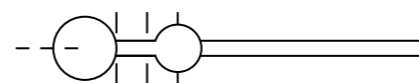
○ TEFLON®



Part no.	Rope Dia: mm	Pre-finished Tape Width mm:	Finished size: mm	Cloth weight: oz	Reel length: m	UOM	Colours
L441T	4	125	5	8 Teflon®	20/100	Metre	○
L442T	5	125	6	8 Teflon®	20/100	Metre	○
L443T	6	125	7	8 Teflon®	20/100	Metre	○

SL SuperLuff • DOUBLE - IMPERIAL

○ WHITE



Part no.	Pre-finished Tape Width mm:	Finished size: inches	Cloth weight: oz	Reel length: m	UOM	Colours
LU605	125	5/32	6	100	Metre	○
LU606	125	3/16	6	100	Metre	○
LU607	125	7/32	6	100	Metre	○
LU608	125	1/4	6	100	Metre	○

Stitch Colour Coding Key	Based on finished size
Yellow	4mm
Red	5mm
Green	6mm
Blue	7mm

Stitch Colour Coding Key	Based on finished size
Orange	5/32"
Black	3/16"
Aqua	7/32"
Grey	1/4"

Luff Tape - Welded

- ◆ Ultra-sound welded luff tape
- ◆ 9 x 9 1100 Dtex polyester fabric
- ◆ High quality low stretch hard braid primary rope
- ◆ Lightweight monofilament secondary rope
- ◆ Consistent size and spacing for accuracy
- ◆ Heavier weave polyester tape for extra durability
- ◆ Packaged on a reel for ease of use around the loft



Part No.	Finished Size (mm)	Rope Construction	Colour	Reel Length (m)
LW441BK	5	Double	Black	100
LW441BK300	5	Double	Black	300
LW441WT	5	Double	White	100
LW441WT300	5	Double	White	300

Luff Foam

Foam used to reduce camber (draft) of roller furling sail when partially furled. When sewn on luff in a crescent moon shape there will be more cloth rolled out of the middle than the ends to help flatten the reefed sail



- ◆ Foam padding flattens sail when furled
- ◆ Flatter sail reduces heeling, makes boat easier to steer
- ◆ Easy to cut
- ◆ Does not absorb water
- ◆ Available only on full rolls
- ◆ 1XPE physically cross linked foam
- ◆ 33 kg/m³ density

Part No.	Roll Length (m)	Thickness (mm)	Width (mm)	UOM
LR001025	25	5	1000	Metre

Aramid PSA Patch

- ◆ Ideal for lightweight corner patches and local reinforcement on laminate sails
- ◆ Onboard laminate sail repairs



Part No.	Description	Roll / Width (mm)	UOM
F7010Z00M	Aramid Patch Cloth - 137cm Adhesive backed	1370	Metre
J742	Adhesive Aramid Tape - 400 Denier Twaron®	50	Metre
J743	Adhesive Aramid Tape - 400 Denier Twaron®	75	Metre
J744	Adhesive Aramid Tape - 400 Denier Twaron®	102	Metre

Polyester Sailcloth with PSA

- ◆ Polyester sailcloth with a UV stable (non-yellowing) pressure sensitive adhesive coating with backing paper
- ◆ A comprehensive range of weights available
- ◆ Uses include: 2-ply, spreader and chafe patches, parts and repairs



Part No.	Roll Width (cm)	UOM
FWP0400A	137	Metre
FWP0500A	137	Metre
FWP0600A	137	Metre
FWP0700A	137	Metre
FWP0800A	137	Metre
FWP0900A	137	Metre



PSA Acrylic

PSA Acrylic Solacryl is used to prevent UV radiation from attacking the headsail while a boat is moored. It is advisable to place a UV strip on its leech and foot. Once rolled up, the sail is completely protected from the harmful effects of the sun. Our PSA backing greatly increases efficiency during application, therefore reduces time and labour cost when fitting acrylic UV covers.

- ◆ Composition: 100% Solacryl Acrylic
- ◆ Finish: Special marine treatment
- ◆ High quality appearance of a traditional cover
- ◆ Acrylic yarns give excellent UV stability
- ◆ 100% solution dyed for consistent, rich, non-fade colours
- ◆ Fungi, bacteria and insect resistant
- ◆ Rot proof, oil and grease resistant
- ◆ Weight: 355gsm
- ◆ Width: 150cm



Part No.	Weight (gsm)	Roll Width (cm)	Colour	UOM
F83500100A	355	150	White	Metre
F83500206A	355	150	Captain Navy	Metre
F83500230A	355	150	Mid Blue	Metre
F83500300A	355	150	Silver	Metre
F83500450A	355	150	Black	Metre



Monofilm PSA

- ◆ PSA polyester film with self adhesive backing material for boardsails repairs etc



Part No.	Roll Length (m)	Roll/Width (mm)	Pack Qty
J872	45.7	50	Roll
J874	45.7	1370	Metre



PSA Polyester

- ◆ Odyssey® PSA is an acrylic coated, 100% woven polyester with pressure sensitive adhesive suitable for many indoor or outdoor applications
- ◆ Mildew and UV resistant
- ◆ Uses: Boat cover repairs, reinforcement and UV roller furling covers

Part No.	Roll L - (m)	Roll W - (cm)	Colour	UOM
F0808Z00Y	45.7	150	White	Metre
F0808Z18Y	45.7	150	Caribbean Blue	Metre
F0808Z75Y	45.7	150	Burgundy	Metre
F0808Z79Y	45.7	150	Royal Blue	Metre
F0808Z88Y	45.7	150	Silver Grey	Metre
F0808Z90Y	45.7	150	Harbour Blue	Metre
F0808Z97Y	45.7	150	Charcoal Grey	Metre



Sunbrella Furling

Used to prevent UV radiation from attacking the headsail while a boat is moored.

- ◆ Specifically designed for this application, a fabric which - thanks to its light weight, flexibility and durability - does not interfere with the sail's performance
- ◆ Available in both an adhesive and non-adhesive version.
- ◆ Composition: 100% Sunbrella® acrylic
- ◆ Finish: Special marine treatment

Part No.	Roll Length (m)	Width (cm)	Weight (gsm)	Colour	UOM
SUNFU5020	50	165	195	Natural	Metre

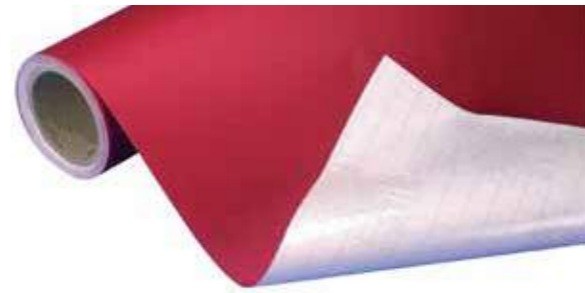
Adhesive Backed

Part No.	Roll Length (m)	Width (cm)	Weight (gsm)	Colour	UOM
SUNFUA5020	50	150	250	Natural	Metre
SUNFUA5035	50	150	250	Silver	Metre



Premium Polyester Insignia

- ◆ Silicone release paper with printed grid pattern
- ◆ Pressure sensitive adhesive (PSA)
- ◆ Uses include: Sail numbers, patching and logos
- ◆ Cut lengths available



Roll Width	Roll Length (m)	Weight with backing paper gsm	Weight without backing paper gsm	UOM
142cm	45.7	262	132	Metre

Premium Printable UV Coated Polyester Insignia

- ◆ Titanium dioxide pigment coating applied for the best UV protection
- ◆ Acrylic adhesive
- ◆ Works for most solvent digital inkjet printing

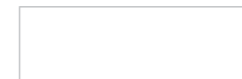


J530WTUV
White

Roll Width	Roll Length (m)	Weight with backing paper gsm	Weight without backing paper gsm	UOM
137cm	45.72m	270	156	Metre

Printable Polyester Insignia

- ◆ Good weather resistance
- ◆ Good performance with easy writing and printable surface on yacht sails



J614WT
White

Roll Width	Roll Length (m)	Weight with backing paper gsm	Weight without backing paper gsm	UOM
137cm	45.72m	319	167	Metre

Please note: Colour representations for Sailcloth, Cover Material and other dye coloured items shown are the closest approximate match permissible by print process. Customers should be aware that the colour of fabrics will alter in appearance to the eye by the light and environment, e.g. bright blue environments will change yellow to greener shades.

Polyester Sailcloth Tape

- ◆ Hot slit to seal the edges
- ◆ Roll lengths are 100 metres nominal
- ◆ Jumbo rolls also available - approx 500m
- ◆ Available only on full rolls
- ◆ Colour: White



Part No.	Width (mm)	Weight		UOM
		gsm	Sm Oz	
S40020	20	170	4.0	Metre
S40025	25	170	4.0	Metre
S40030	30	170	4.0	Metre
S40040	40	170	4.0	Metre
S40045	45	170	4.0	Metre
S40050	50	170	4.0	Metre
S40060	60	170	4.0	Metre
S40063	63	170	4.0	Metre
S40070	70	170	4.0	Metre
S40075	75	170	4.0	Metre
S40080	80	170	4.0	Metre
S40100	100	170	4.0	Metre
S40125	125	170	4.0	Metre
S40150	150	170	4.0	Metre
S50025	25	215	5.0	Metre
S50040	40	215	5.0	Metre
S50050	50	215	5.0	Metre
S50060	60	215	5.0	Metre
S50063	63	215	5.0	Metre
S50070	70	215	5.0	Metre
S50075	75	215	5.0	Metre
S50080	80	215	5.0	Metre
S50090	90	215	5.0	Metre
S50100	100	215	5.0	Metre
S50120	120	215	5.0	Metre
S50125	125	215	5.0	Metre
S50350	350	215	5.0	Metre
S60040	40	255	6.0	Metre
S60050	50	255	6.0	Metre
S60060	60	255	6.0	Metre
S60063	63	255	6.0	Metre
S60070	70	255	6.0	Metre
S60075	75	255	6.0	Metre
S60080	80	255	6.0	Metre
S60090	90	255	6.0	Metre
S60100	100	255	6.0	Metre
S60120	120	255	6.0	Metre
S60125	125	255	6.0	Metre
S60150	150	255	6.0	Metre
S60230	230	255	6.0	Metre
S60250	250	255	6.0	Metre
S60300	300	255	6.0	Metre

Part No.	Width (mm)	Weight		UOM
		gsm	Sm Oz	
S70060	60	300	7.0	Metre
S70063	63	300	7.0	Metre
S70070	70	300	7.0	Metre
S70075	75	300	7.0	Metre
S70080	80	300	7.0	Metre
S70090	90	300	7.0	Metre
S70095	95	300	7.0	Metre
S70100	100	300	7.0	Metre
S70120	120	300	7.0	Metre
S70125	125	300	7.0	Metre
S70150	150	300	7.0	Metre
S70175	175	300	7.0	Metre
S70250	250	300	7.0	Metre
S80040	40	343	8.0	Metre
S80050	50	343	8.0	Metre
S80060	60	343	8.0	Metre
S80063	63	343	8.0	Metre
S80070	70	343	8.0	Metre
S80075	75	343	8.0	Metre
S80080	80	343	8.0	Metre
S80090	90	343	8.0	Metre
S80100	100	343	8.0	Metre
S80120	120	343	8.0	Metre
S80125	125	343	8.0	Metre
S80150	150	343	8.0	Metre
S80175	175	343	8.0	Metre
S80200	200	343	8.0	Metre
S80250	250	343	8.0	Metre

JUMBO ROLLS

- ◆ Rolls 500m long. Marked every 100m.

Part No.	Width (mm)	Weight		UOM
		gsm	Sm Oz	
S50080L	80	215	5.0	Metre
S60080L	80	255	6.0	Metre
S60100L	100	255	6.0	Metre
S70100L	100	300	7.0	Metre
S60125L	125	255	6.0	Metre
S70125L	125	300	7.0	Metre

PTFE Tape

- ◆ Profile PTFE yarns are woven into fabric to reduce friction when used in the manufacture of luff tapes
- ◆ Cut lengths available on request
- ◆ Non-fray selvage edge
- ◆ All rolls are approximately 20m or 100m



Part No.	Width (mm)	Weight gsm	Weight Sm Oz	Metres Per Roll
S80080T	80	343	8.0	100
S80080T20	80	343	8.0	20
S80100T	100	343	8.0	100
S80100T20	100	343	8.0	20
S80125T	125	343	8.0	100
S80125T20	125	343	8.0	20

Dyneema® Slit Tape

- ◆ 1000 Denier Dyneema® yarns are woven into fabric to reduce friction when used in the manufacture of luff tapes
- ◆ Dyneema® increases strength and reduces friction
- ◆ Can be used for batten chafe on full length pockets
- ◆ Low friction, high strength ideal for additional reinforcing at wear points on groove luff mainsails and One Design sails, i.e cunningham, batten pockets and headboard
- ◆ All white finish
- ◆ Non-fray selvage edge
- ◆ All rolls are approximately 20m or 100m
- ◆ Exclusive to Bainbridge



Part No.	Width (mm)	Weight gsm	Weight Sm Oz	UOM
S80125SP	125	343	8.0	100
S80125SP20	125	343	8.0	20

5-8oz Classic Polyester Coloured Sailcloth Tape

- ◆ These tapes are manufactured from Bainbridge polyester sailcloth
- ◆ Hot slit to seal the edges
- ◆ Available only on full rolls



Width (mm)	Cream	Tan	Weight gsm	Weight Sm Oz	UOM
50	-	S50050TN	215	5.0	Metre
63	-	S50063TN	215	5.0	Metre
63	S60063CR	S60063TN	255	6.0	Metre
75	S60075CR	S60075TN	255	6.0	Metre
75	S70075CR	S70075TN	300	7.0	Metre
80	S60080CR	S60080TN	255	6.0	Metre
80	S70080CR	S70080TN	300	7.0	Metre
100	S60100CR	S60100TN	255	6.0	Metre
100	S70100CR	S70100TN	300	7.0	Metre
100	S80100CR	S80100TN	343	8.0	Metre
125	S70125CR	S70125TN	300	7.0	Metre
125	S80125CR	S80125TN	343	8.0	Metre

6oz Polyester Black Sailcloth Tape

- ◆ These tapes are manufactured from Bainbridge polyester sailcloth
- ◆ Hot slit to seal the edges
- ◆ Available only on full rolls
- ◆ Other colours and widths available on request



Part No.	Width (mm)	Weight gsm	Colour	UOM
S60050BK	50	270	Black	Metre
S60063BK	63	270	Black	Metre
S60080BK	80	270	Black	Metre
S60100BK	100	270	Black	Metre

4oz Polyester Coloured Sailcloth Tape

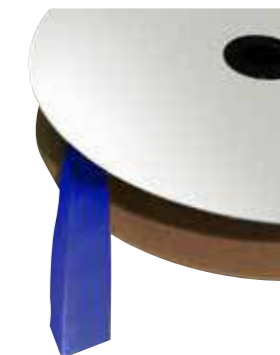
- ◆ These tapes are manufactured from Bainbridge polyester sailcloth
- ◆ Hot slit to seal the edges
- ◆ All rolls are 100 metres nominal
- ◆ Available only on full rolls



Width (mm)	Black	Blue	Green	Red	Weight gsm	Weight Sm Oz	UOM
25	S40025BK	S40025BU	S40025GR	S40025RD	170	4.0	Metre
30	S40030BK	-	-	-	170	4.0	Metre
40	S40040BK	S40040BU	S40040GR	S40040RD	170	4.0	Metre
50	S40050BK	S40050BU	S40050GR	S40050RD	170	4.0	Metre
60	S40060BK	S40060BU	S40060GR	S40060RD	170	4.0	Metre
63	S40063BK	-	-	-	170	4.0	Metre
75	S40075BK	S40075BU	S40075GR	S40075RD	170	4.0	Metre
80	S40080BK	S40080BU	-	S40080RD	170	4.0	Metre
100	S40100BK	S40100BU	-	S40100RD	170	4.0	Metre
125	S40125BK	-	-	-	170	4.0	Metre

4oz Folded Polyester Coloured Sailcloth Tape

- ◆ Bainbridge polyester sailcloth
- ◆ Hot slit to seal the edges
- ◆ All roll lengths are 100m
- ◆ Centre folded



Tape Width (mm)	Folded Width (mm)	Black	Blue	Green	Red	Weight gsm	Weight Sm Oz	UOM
40	20	S440040BKF	S40040BUF	S40040GRF	S40040RDF	170	4.0	Metre
50	25	S40050BKF	S40050BUF	S40050GRF	S40050RDF	170	4.0	Metre
100	50	S40100BKF	S40100BUF	S40100GRF	S40100RDF	170	4.0	Metre

Nylon Coloured Spinnaker Tape

- ◆ Other widths can be supplied - please enquire
- ◆ Hot slit to seal the edges
- ◆ All rolls are 100 metres nominal
- ◆ Available only on full rolls



Width (mm)	Green	Red	White	Weight gsm	Weight Sm Oz	UOM
25	T025GR	T025RD	T025WT	170	4.0	Metre
40	T040GR	T040RD	T040WT	170	4.0	Metre
50	T050GR	T050RD	T050WT	170	4.0	Metre
60	T060GR	T060RD	T060WT	170	4.0	Metre
75	T075GR	T075RD	T075WT	170	4.0	Metre
80	T080GR	T080RD	T080WT	170	4.0	Metre

Folded Polyester Tape

- ◆ These tapes are manufactured from Bainbridge polyester sailcloth
- ◆ Hot slit to seal the edges
- ◆ All roll lengths are 100 metres nominal
- ◆ Centre folded and wound onto spool for ease of use in a Sail Loft
- ◆ Folded to order



Part No.	Tape Width (mm)	Folded Width (mm)	Weight gsm	Sm Oz	UOM
S40025F	25	12.5	170	4.0	Metre
S40040F	40	20	170	4.0	Metre
S40050F	50	25	170	4.0	Metre
S40060F	60	30	170	4.0	Metre
S40063F	63	31.5	170	4.0	Metre
S40080F	80	40	170	4.0	Metre
S50050F	50	25	215	5.0	Metre
S50060F	60	30	215	5.0	Metre
S50063F	63	31.5	215	5.0	Metre
S50080F	80	40	215	5.0	Metre
S50090F	90	45	215	5.0	Metre
S50100F	100	50	215	5.0	Metre
S60040F	40	20	255	6.0	Metre
S60050F	50	25	255	6.0	Metre
S60060F	60	30	255	6.0	Metre
S60075F	75	37.5	255	6.0	Metre
S60080F	80	40	255	6.0	Metre
S60100F	100	50	255	6.0	Metre
S60120F	120	60	255	6.0	Metre
S70060F	60	30	300	7.0	Metre
S70070F	70	35	300	7.0	Metre
S70080F	80	40	300	7.0	Metre
S70100F	100	50	300	7.0	Metre
S70120F	120	60	300	7.0	Metre

Nylon Repair Tape

- ◆ Instant repairs when you need it most
- ◆ Adheres instantly on contact
- ◆ Conforms to the shape of the sail
- ◆ Can be used for emergency repair to foul weather gear, seat cushions, boat covers and canvas
- ◆ Prevents sail chafe



Part No.	Weight (gsm)	Size (mm x m)	Colour	UOM
FWN4501A	45	50 x 10	White	Roll
FWN4510A	45	50 x 10	Red	Roll
FWN4513A	45	50 x 10	Pink	Roll
FWN4530A	45	50 x 10	Yellow	Roll
FWN4550A	45	50 x 10	Green	Roll
FWN4560A	45	50 x 10	Royal Blue	Roll
FWN4564A	45	50 x 10	Aqua Blue	Roll
FWN4599A	45	50 x 10	Black	Roll

Sail Repair Patches

- ◆ Heavy duty PSA self adhesive sail repair patches
- ◆ Miscellaneous sizes suits most small to medium repairs
- ◆ Radiused edge helps reduce peel
- ◆ Available in 5 colours
- ◆ Suitable for all types of sailcloth including laminate, polyester and nylon
- ◆ Can be used as emergency repairs for sails, foul weather gear, seat cushions and boat covers
- ◆ Ideal for repairing batten pockets and also as chafing patch
- ◆ Bainbridge UK manufacture



AQM514BU AQM514RD AQM514WT

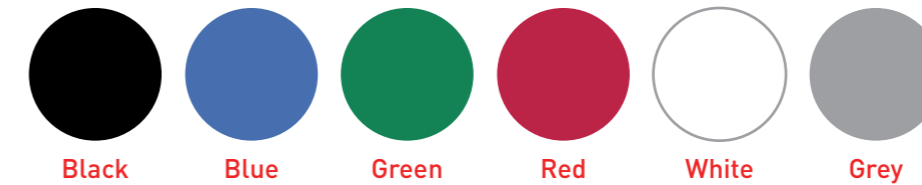


AQM514BK AQM514GY

Part No.	Colour	Pack Qty
AQM514BU	Blue	10
AQM514RD	Red	10
AQM514WT	White	10
AQM514BK	Black	10
AQM514GY	Grey	10

Circles & Tell Tale Patches

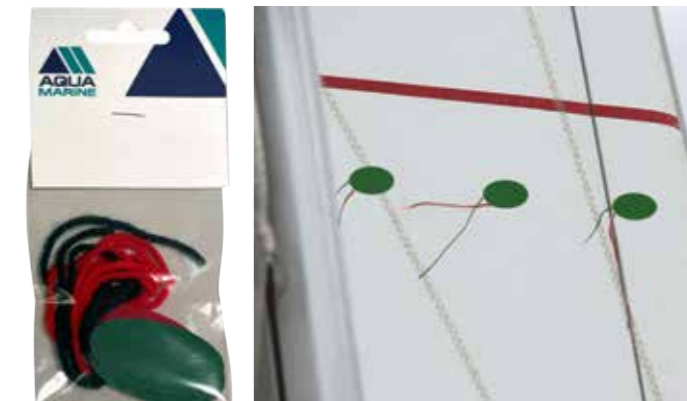
- ◆ Self adhesive insignia circles for reinforcement, protection or repair
- ◆ Various colours / sizes available



Size (mm)	Black	Blue	Green	Red	White	Grey	Pack Qty
25	SD002BK	SD002BU	SD002GR	SD002RD	SD002WT	SD002GY	10
50	SL002BK	SL002BU	SL002GR	SL002RD	SL002WT	SL002GY	10
100	SL003BK	SL003BU	SL003GR	SL003RD	SL003WT	SL003GY	10
150	SL004BK	SL004BU	SL004GR	SL004RD	SL004WT	SL004GY	10
200	SL006BK	SL006BU	SL006GR	SL006RD	SL006WT	SL006GY	10

AQM Tell Tales

- ◆ Self adhesive oval insignia patch with wool tell tale
- ◆ Easy application



Part No.	Description	UOM
AQMTT01	4 x red 4 x green	EACH

Cutting & Nesting

Bainbridge can plot or cut from your drawings or designs as a ntv or a dxf file and take those and prepare them as cutting files - these are the fully nested instruction sets suitable for plotting and cutting. Our nesting software ensures that material wastage is reduced to the mathematical minimum – the iterative algorithms used are the best available and fully automatic.

The choice of how much of the package you wish to use is entirely yours. Our intention is to be an extension of your team allowing increased capacity and providing a dependable service.

See the inside front cover for full details of what materials we can cut.

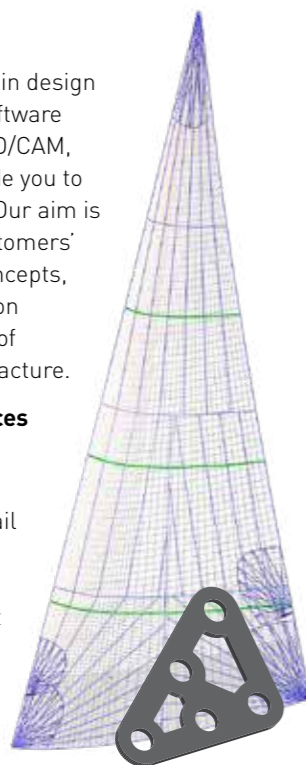


Design

Using our in-house expertise in design alongside industry leading software covering many aspects of CAD/CAM, Bainbridge can work alongside you to deliver the very best results. Our aim is to allow you to meet your customers' expectations. We can take concepts, measurements, or drawings on to provide all the advantages of automated design and manufacture.

We can provide design services for:

- ◆ Sail design – from boat measurements and/or sail measurements
- ◆ Digitising of templates
- ◆ Metal fittings, and output suitable for 3D printing
- ◆ Plastic fittings, and output suitable for 3D printing



We will work closely with you to provide bespoke solutions that best fit your manufacturing needs - Bainbridge delivers a design service that is fast and efficient.

In-house Tensile Testing

All our sailcloth products undergo rigorous testing using our Lloyd Instruments single pillar machine with an annually certified and fully electronic load cell. Further it can apply compressive force to be able to measure a material's ability to take load in any direction - an example is testing the hardness of plastics or metals. Therefore, the same machine can test materials of many sorts in most products, so if you have a need to test something before using it in manufacture, you only have to ask.



Slitting & Converting Services

Bainbridge specialises in precision slitting and rewinding of a wide range of materials. This includes both roll-to-roll and cut lengths.

We take pride in our ability to work alongside our customers R&D departments in the strictest confidence trialling new and revised materials giving valuable advice on all aspects of the slitting and rewinding process. Our skilled staff have the experience and depth of knowledge to add value to our customers products.

Bainbridge has worked with many types of materials over the years and include but are not limited to:

- ◆ Wovens – polyester and hybrid sailcloth, nylons, and acrylic cover fabrics
- ◆ Non-wovens – protective sheeting, and including those for medical purposes and PPE
- ◆ Films and PVC
- ◆ Laminates
- ◆ Advanced flexible materials

Bainbridge has custom-built machinery which includes



a computerised tension control system which ensures that the same parameters are accurately reproduced in subsequent production runs giving the customer absolute confidence in the consistent quality of repeat orders.

Over the years, we have handled on behalf of our customers many different materials and fabrics to input rolls of various widths and weights to output various widths in one single pass operation.

Heat Slitting

As well as using conventional cold slitting techniques Bainbridge can heat slit synthetic materials (usually woven) where it is important to seal the cut edges to stop fraying or fibre contamination.

Batch Traceability

Bainbridge also offers full batch traceability together with customised labelling to exact customer specifications using the your own specialised packaging materials as required.

Commercial & Intellectual Property Rights

We fully appreciate that Intellectual Property Rights (IPR) are very important to your business, and that the type of information that would be supplied to us to offer these services will often be of a sensitive commercial nature and we will be more than happy to sign Non-Disclosure Agreements (NDA) with you as required. We do this as a matter of course in our normal business so are familiar to being bound by these types of constraints.

Storage, Distribution & Logistics

From our modern premises on the south coast of England, Bainbridge can offer clean dry storage facilities to our customers for raw materials together with finished goods.

Distribution of our customers products can also be organised to their scheduled instructions for deliveries within the UK, Europe and beyond.

We have a fleet of vans that deliver daily on a local basis and further afield as required.



LENGTH		
To Convert	Into	Multiply By
Inches	Millimetres	25.4
Feet	Metres	0.3048
Yards	Metres	0.9144
Miles	Kilometres	1.609
Mil (1/1000 of inch)	Millimetres	0.0254
Mil (1/1000 of inch)	Microns	25.4

AREA		
To Convert	Into	Multiply By
Square Yards	Square Metres	0.836

WEIGHT		
To Convert	Into	Multiply By
Ounces	Grammes	28.35
Pounds	Kilogrammes	0.4536

FABRIC		
To Convert	Into	Multiply By
Sailmakers Ounces	Ounces /Square Yard	1.263
Sailmakers Ounces	Grammes/Square Metre	42.83
Ounces/Square Yard	Sailmakers Ounces	0.792
Ounces/Square Yard	Grammes/Square Metre	33.91

GLOSSARY

316 Stainless Steel: A grade of stainless steel ideal for the marine environment.

AIRX: Bainbridge's brand name for a superior range of performance spinnaker nylons.

Bias: A diagonal across a piece of fabric at 45° to the warp and fill.

Carbon: An extreme performance fibre used extensively in composite engineering and the sailcloth market.

Creep: The property of fibres to gradually stretch under a constant load.

Crimp: Length or waviness added to a yarn when it is woven over-and-under in a piece of fabric. Crimp can contribute to the elongation of a fabric under load.

Dacron: DuPont's trade name for polyester fibre.

Denier: Weight of 9000 metres of yarn in grams.

DTex: Weight of 10,000m of yarn in grams.

DIAX: Bainbridge's brand name for laminates.

Dyneema®: Super strong polyethylene fibre made by DSM, up to 40% stronger than aramid

fibres. Also resistant to UV and moisture.

Elongation: The difference between the length of a stretched sample and its initial length; expressed in 1/100ths of an inch.

Fibre: Strand of material used to spin into a yarn.

Fill: The yarn or fibre running across the width of the fabric at right angles to the warp.

Gsm: Weight in grams of a square metre of cloth.

Kevlar: DuPont's trade name for a family of high-strength aramid fibres.

Laminate: A layered fabric made by bonding scrim and/or taffetas to one or two plies of film.

Modulus: The measure of stretch or elasticity of a fabric. High Modulus = low stretch.

MPEX: Bainbridge's brand name for a range of multi - purpose spinnaker fabrics.

Polyester: A strong, reliable fibre ideal for cruising, racing laminates and woven sailcloth.

Primary Yarn Direction: The orientation (warp or fill) in which a fabric is the most stretch resistant.

Sailmakers Ounces (sm oz): Weight of a 36" x 28.5" piece of cloth.

Scrim: Non woven, formed sheet of yarns held together with resin.

Spectra: A highly modified polyethylene fibre developed by Allied Corp.

Taffeta: A light woven fabric used on laminates to add durability and abrasion resistance.

Tenacity: The breaking strength of a yarn or fabric stated in force per unit of the cross-sectional area.

Tensile Strength: The ability of a fibre, yarn or fabric to resist breaking under tension.

Technora: Aramid fibres with lower modulus but better flex properties than Twaron®.

Thread line: The direction of the yarns.

Titanium: Low density, high strength metal and resistant to corrosion.

Twaron®: Family of aramid fibres made by Akzo.

Vectran®: A liquid crystal polymer (LCP) fibre 10 times stronger than aluminium.

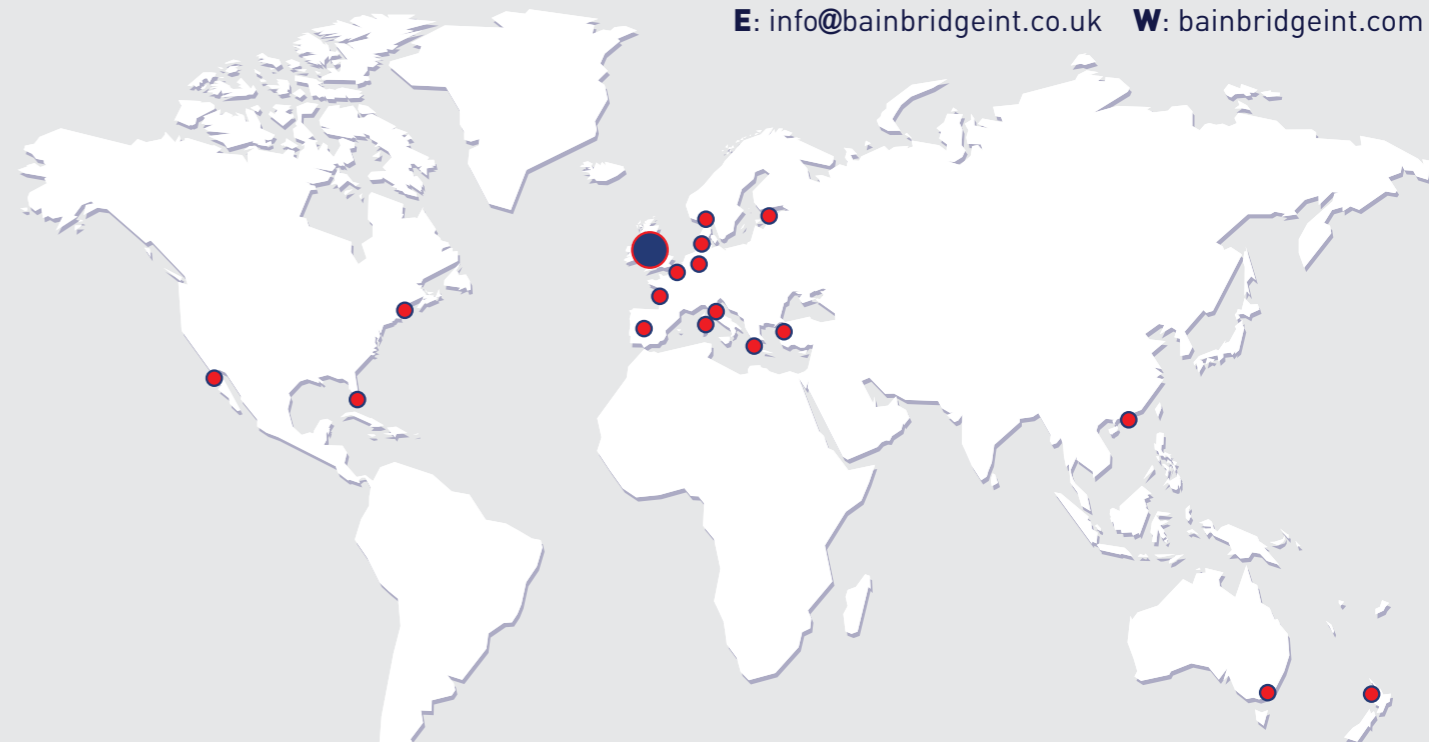
Warp: The yarn or fibre running the length of a fabric.



Bainbridge

GLOBAL HEADQUARTERS

Bainbridge International Ltd
 8 Flanders Park, Southampton, Hampshire SO30 2FZ UK
T: +44 (0) 1489 776010
E: info@bainbridgeint.co.uk **W:** bainbridgeint.com



AUSTRALIA
Bainbridge International Pty. Ltd
 273 Harbour Road, Brookvale, NSW 2100
T: +61 (0) 2 9938 1788
E: info@bainbridgeint.com.au
W: www.bainbridgeaus.com.au

DENMARK
Columbus Marine
 Svejsengang 3, DK-2690, Karlslunde
T: +45 4619 1166
E: info@columbus-marine.dk
W: www.columbus-marine.dk

FRANCE, SPAIN & NORTH AFRICA
VMG Soromap
 Z.A. de Bélignon, 17300 Rochefort / Mer, France
T: +33 (0) 5 46 87 84 80
E: contact@vmgsoromap.com
W: www.vmgSOROMAP.com

GERMANY
Herman Gotthardt GmbH
 Leunastrasse 50, D-22761 Hamburg
T: +44 40 85150550
E: info@gotthardt-yacht.de
W: www.gotthardt-yacht.de

GREECE, BULGARIA, ROMANIA & CROATIA
Takis Kokkotas Co. Ltd.
 80 Mezonos Str, 104 38, Athens
T: +30 210 52 28 540
E: info@kokkotas.gr
W: www.kokkotas.gr

HONG KONG & CHINA
Sky International
 Room 703, 7/F, Henan Building, 90 Jaffe Road, Wanchai
T: +852 2827 5876
E: web@sky-international.com
W: www.sky-international.com

ITALY
Sacloma S.a.s.
 Via Cisa Sud 125, 19037, S. Stefano di Magra (SP)
T: +39 0187 630603
E: sacloma@sacloma.com
W: www.sacloma.com

ITALY
Boat Rigging s.r.l.
 Via San Gallo 23, 50028, Tavarnelle Val di Pesa Loc., Sambuca(FI)
T: +39 055 8071964
E: luca@boatrigging.it
W: www.boatrigging.it

NETHERLANDS
On Deck BV
 Leimuiderdijk 478A, 2156 MX Weteringburg, Netherlands
T: +31 71 331 33 66
E: allhands@on-deck.nl
W: www.on-deck.nl

NEW ZEALAND
Q C D Limited
 8 Taylors Road, Sandringham, 1025, Auckland
T: +64 (0) 9 815 7500
E: sales@qcd.co.nz
W: www.qcd.co.nz

RUSSIA
Fordewind-Regatta Ltd
 Petrovskaya Kosa 7, 197110, St. Petersburg
T: +7 812 327 4580
E: office@fordewind-regatta.ru
W: www.fordewind-regatta.ru

SWEDEN & NORWAY
Aspero Handels AB
 PO Box 5009, Traneredsvagen 112, SE-426 05 V. Frolunda
T: +46 31 299 190
E: info@aspero.se
W: www.aspero.se

TURKEY
SORG Yelken Promosyon ve
 Acibadem Mh. Umut Sk. Akpak Apt. 10/A Kadikoy - Istanbul
T: +90 (216) 3177575
E: info@sailmaker.org
W: www.sailmaker.org

USA, CANADA, SOUTH AMERICA & CARIBBEAN
Bainbridge International Inc.
 255 Revere Street, Canton 02021, Massachusetts
T: +1 781 821 2600
E: info@bainbridgeintusa.com
W: www.bainbridgeintusa.com



Bainbridge

Bainbridge International Ltd

8 Flanders Park, Southampton, Hampshire SO30 2FZ UK

T: +44 (0) 1489 776010

E: info@bainbridgeint.co.uk

W: bainbridgeint.com